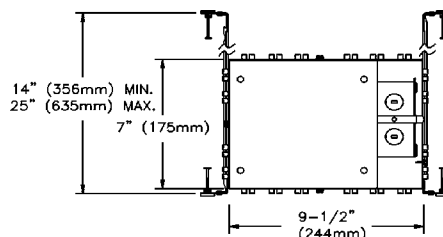
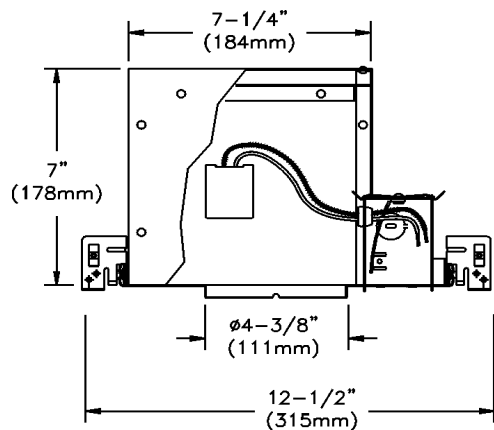


V-FRAME



Complete fixture consists of the Trim and Frame-in Kit. Select each separately.

Frame-in Kit	Lamp	Reflector Trim
502AICSX	50W PAR20	Accepts all 4-1/4" (108mm), 500X Series trims: See Reflector Trim specification sheets.

Features

Mounting Frame: 20 ga. (.032") galvanized steel. Four slots are positioned 90° apart to simplify alignment of luminaires.

Mounting Bars: 20ga. galvanized steel. Lockable on frame-in kit. Extend from 14" (356mm) to 25" (635mm). Pre-installed integral nails for secure attachment to wood joists. Attaches to T-bar ceilings without the need of accessories.

Socket: Porcelain medium base; nickel plated screw shell. Pre-wired with 18ga. SEW leads connected to junction box.

Junction Box: 4" (102mm) x 3" (76mm) x 2" (51mm) 18ga. galvanized steel. Pry-out knock-outs accept BX cable. Easy access from both sides with snap on covers.

Housing: .032" (No.20 ga.) aluminum. CSA certified and UL Listed for direct contact with thermal insulation thermique. Airseal housing minimizes air leakage to less than 2 CFM at 1.57 PSF (or 75pa), which complies with Model Energy Code (Section 602.3.3) and Washing State Energy Code (Section 502.4) Reduces heat loss and condensation in ceiling. Access door to junction box.

Thermal Protection: Meets CSA/UL requirements for "inherently" protected luminaire.

Markings

cCSAus Certified

Damp or Wet location rated depending on Trim used.

Project: _____

Location: _____

Cat.No: _____

Type: _____

Lamps: _____ Qty: _____

Notes: _____

