

LIGHTOLIER

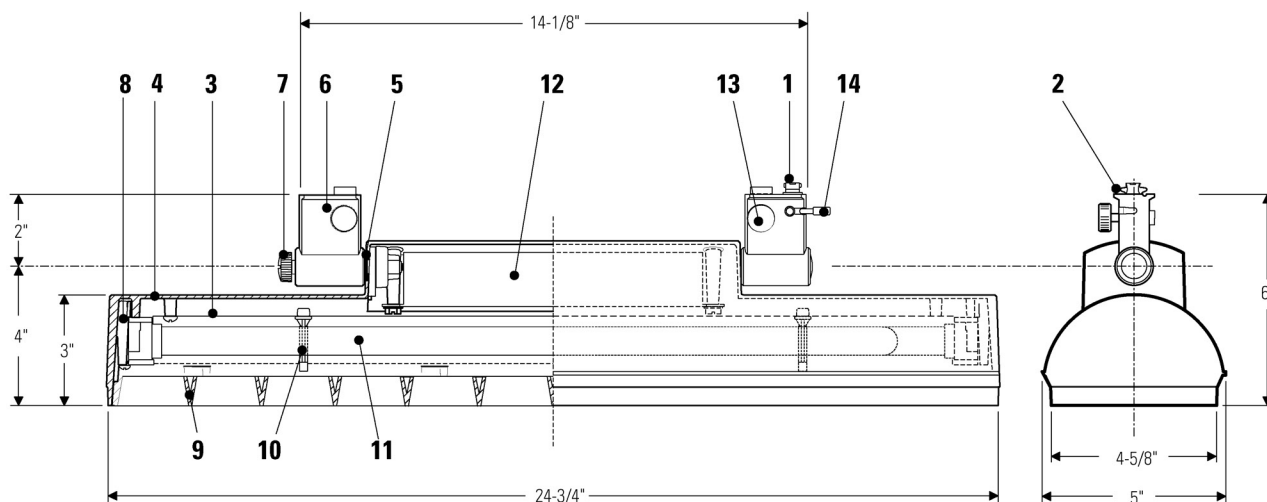
by @signify

Track Lighting

Lyteflood CFL

8279EN L40 flood track head

Project: _____
Location: _____
Cat.No: _____
Type: _____
Lamps: _____ Qty: _____
Notes: _____



Ordering Information

Cat. No.	Finish	Mounting	Ballast	Input Wats	Amps	Lamps
8279ENWH	Matte White/Metalized Louver	All Lytespan Track Systems DO NOT attach to stem mounted track (unless used with suspension beam housing) or track mounted with swivel stem (7480, 7481).	Electronic	78W	.65AMP	2 Lt. 40W (22 1/2")
8279ENWWH	Matte White/White Louver					Twin Tube Fluorescent
8279ENBK	Matte Black/Metalized Louver					PL-L 40W/RS by Phillips F40/30BX by GE FT40 DL/RS by Osram/Sylvania

Features

- Attachment Fitting:** Molded polycarbonate, pin rotates fitting to engage into track to energize fixture.
- Brass Contact:** Extends for connection to second circuit in Advent® Lytespan track.
- Reflector:** Specular Plus® finish.
- Body Housing:** One-piece die-cast aluminum.
- Pivot Tension Mount:** 0° - 90° Vertical rotation from NADIR in both directions; (0° - 78° from NADIR when used with Recessed Track).
- (2) Track Adaptor Housing:** Die-cast aluminum.
- Aiming Lock:** Locks vertical position at the desired aiming angle.
- Lamp Socket:** High temperature thermoplastic.
- Louver with Parabolic Blades:** Snaps inside fixtures body. Molded ABS, semi-specular finish or integral white blades.
- Lamp Support Clip (2):** High temperature thermoplastic.
- (2) 40W Twin Tube:** Compact fluorescent lamp (by others).

12. Ballast: Electronic, 2 Lt. power factor greater than .99, light weight, harmonic distortion less than 10%.

13. Locking Knob: Mechanically locks fixture to the track, independently from the electrical connection.

14. Lever: Energizes fixture.

Electrical

Lampholder and ballast prewired with 105°C 18 ga. wire. Input voltage 120V.

Finish

All painted finishes baked enamel.

Labels

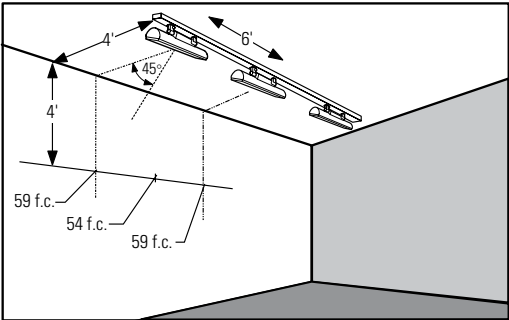
UL, I.B.E.W.

8279EN Lyteflood CFL

L40 flood track head

Lighting Data

FOOTCANDLES ON WALL:



EXAMPLE: With track located 4' from wall and multiple units spaced 6' on center and aimed 45° from horizontal, the illumination on wall 4' from ceiling will be 59 f.c. beneath units and 54 f.c. between units.

Footcandles on Wall

Track 3 Feet From Wall

Single Unit

		0'	1'	2'	3'	4'	5'
Distance From Ceiling in Feet	1'	141	110	57	22	6	1
	2'	127	108	71	39	19	9
	3'	76	68	50	31	10	10
	4'	45	42	34	24	15	9
	5'	29	27	23	17	12	8
	6'	19	19	16	13	10	7
	7'	13	13	11	10	8	6
	8'	9	9	8	7	6	5
	9'	7	7	6	6	5	4

Multiple Units

	3'	4'	5'
1'	181 165 181	149 109 149	139 68 139
2'	217 211 217	171 111 171	151 113 151
3'	150 150 150	117 111 171	99 86 99
4'	106 105 106	81 80 81	66 63 66
5'	74 74 74	56 56 56	45 43 45
6'	58 59 58	45 45 45	37 37 37
7'	43 43 43	34 34 34	28 28 28
8'	32 33 32	26 26 26	21 21 21
9'	27 27 27	22 22 22	18 18 18

Track 4 Feet From Wall

Single Unit

		0'	1'	2'	3'	4'	5'
Distance From Ceiling in Feet	1'	80	69	47	27	14	7
	2'	77	68	49	30	17	8
	3'	61	56	44	31	20	11
	4'	42	39	33	25	18	12
	5'	28	27	23	19	14	10
	6'	21	20	18	15	12	9
	7'	15	14	13	11	9	7
	8'	11	11	10	9	8	6
	9'	9	9	8	7	6	5

Multiple Units

	4'	5'	6'
1'	112 103 112	97 76 97	90 57 90
2'	110 104 110	91 79 91	82 59 82
3'	103 100 103	84 78 84	73 61 73
4'	83 83 83	68 66 68	59 54 59
5'	63 62 63	51 50 51	43 42 43
6'	50 51 50	41 41 41	35 34 35
7'	40 40 40	32 33 32	27 27 27
8'	34 35 34	28 29 28	24 24 24
9'	29 29 29	24 24 24	20 21 20

Footcandles are average and rounded off and are based on a minimum of five units.

