

## DESCRIPTION

The McGraw-Edison BSC / BRC Bollard, available in heights from 24" to 42", has crisp, clean lines which blend with any architectural setting. Constructed of seamless, heavy-duty aluminum and finished with tough polyester powder coat, the Bollard is gasketed to seal out external contaminant's. U.L. 1598 listed and CSA certified for wet locations.

Bollards are designed for walkways, entranceways, drives and other small-area lighting applications where low mounting heights are desirable.

## SPECIFICATION FEATURES

### Construction

**TOP:** Rugged, heavy-duty aluminum. Provides rapid heat dissipation. Encloses the upper reflector so it is hidden from view. Tamper-proof screws provide easy access to lamp compartment. **HOUSING:** Consists of a heavy-duty, seamless extruded aluminum tube. Lifts off base for easy access to ballast. **BASE:** Rugged cast aluminum. Completely concealed.

### Electrical

High Power Factor ballast for -20°F starting. Product is factory mounted to the base. Quick disconnects provided between lamp and electrical assembly. HPS and MP Lamp sources up to 150W MP or HPS and up to 42W Compact Fluorescent sources available with MOL length not exceeding 7". **GASKETING:** Bollards are designed to form a single, integral unit that is completely gasketed and sealed from outside contaminants.

### Optics

Lower dispersing reflector, in conjunction with a truncated, octagonal upper collecting reflector, provides low-glare, highly efficient illumination with optimum uniformity. **EXAMPLE:** Using 70W HPS lamps with Bollard Series luminaires mounted on 20' centers produce a symmetric light pattern with a max. to min. uniformity ratio of less than 4:1. **LENS:** 1/4" wall, impact-resistant clear acrylic. **PRISMATIC REFRACTOR:** All Bollard Series luminaires are available with an optional prismatic borosilicate glass refractor to provide efficient, low-glare light distribution (not shown).

### Mounting

Base mounts onto foundation with three (3) 1/2" x 12 1/2" anchor bolts on a 5" Dia. bolt circle (a centrally located 2 7/8" x 3 1/2" wire entrance opening provided). Bollard housing is secured to the base with flathead, counter-sunk screws for smooth, uncluttered appearance.

### Finish

Premium fade and abrasion resistant, TGIC Polyester Powder Coat Finish. Standard colors are Black, Grey, Bronze, White, Dark Platinum and Graphite Metallic. Other finish colors available including all RAL matches.

### Efficiency Standards Notice

Select luminaires are manufactured to USA and California efficiency regulations.



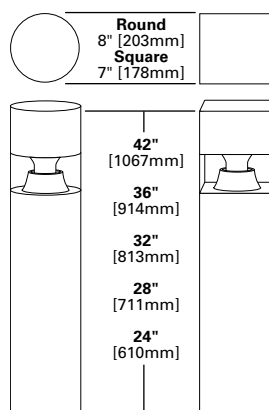
## BSC/BRC BOLLARD

26 - 150W

Pulse Start Metal Halide  
High Pressure Sodium  
Compact Fluorescent  
Incandescent

PATHWAY LUMINAIRE

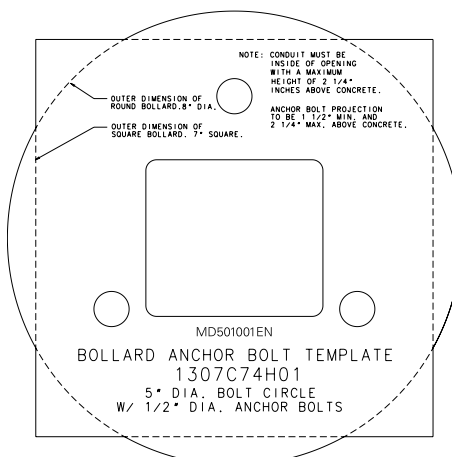
## DIMENSIONS



## WATTAGE TABLE

Lamp Type	Wattage
Pulse Start Metal Halide (MP)	50, 70, 100, 150W
High Pressure Sodium (HPS)	35, 50, 70, 100, 150W
Compact Fluorescent (CF)	(1) 26, (1) 32, (1) 42W
Incandescent (IN)	100W

## ANCHOR BOLT TEMPLATE (NOT TO SCALE)



## ENERGY DATA

Reactor Ballast Input Watts  
35W HPS NPF (46 Watts)

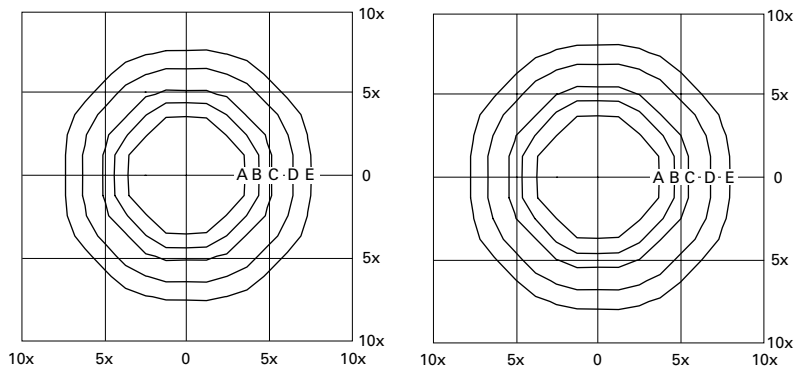
## High Reactance Ballast Input Watts

50W HPS HPF (62 Watts)  
50W MP HPF (69 Watts)  
70W HPS HPF (86 Watts)  
70W MP HPF (94 Watts)  
100W HPS HPF (115 Watts)  
100W MP HPF (129 Watts)  
150W HPS HPF (170 Watts)  
150W MP HPF (185 Watts)

## SHIPPING DATA

Approximate Net Weight:  
26 lbs. (12 kgs.)

## PHOTOMETRICS



## Footcandle Table

Select mounting height and read across for footcandle values of each isofootcandle line. Distance in units of mounting height.

Mounting Height	Footcandle Values for Isofootcandle Lines				
	A	B	C	D	E
42"	1.20	0.60	0.30	0.12	0.06
36"	2.00	1.00	0.50	0.20	0.10
32"	2.40	1.20	0.60	0.24	0.12
28"	3.20	1.60	0.80	0.32	0.16
24"	4.40	2.20	1.10	0.44	0.22

## BSC-36-100-MP

100-Watt MP

7,900-Lumen Lamp (Clear ED-17)

## BSC-36-100-HPS

100-Watt HPS

8,800-Lumen Clear Lamp (Clear ED-17)

## ORDERING INFORMATION

Sample Number: BSC-36-100-MP-MT-BK

Product Family	Fixture Height	Lamp Wattage <sup>1</sup>	Lamp Type <sup>6</sup>	Voltage <sup>6</sup>	Color <sup>10</sup>	Options
<b>BSC</b> =Square Bollard with Clear Lens and Square Top  <b>BRC</b> =Round Bollard with Clear Lens and Cylindrical Top	24=24" 28=28" 32=32" 36=36" 42=42"	<b>MP</b> 70=70W 100=100W 150=150W  <b>HPS</b> 35=35W <sup>2</sup> 70=70W <sup>3</sup> 100=100W 150=150W  <b>CF</b> <sup>4</sup> 26=(1) 26W 32=(1) 32W 42=(1) 42W  <b>IC</b> <sup>5</sup> 100=100W	<b>MP</b> =Pulse Start Metal Halide <b>HPS</b> =High Pressure Sodium <b>CF</b> =Compact Fluorescent <sup>4</sup> <b>IC</b> =Incandescent	120=120V 208=208V 240=240V 277=277V 347=347V <b>MT</b> =Multi-Tap <sup>7</sup> <b>TT</b> =Triple-Tap <sup>7</sup> <b>UNV</b> =Universal 120-277V <sup>8,9</sup>	<b>AP</b> =Grey <b>BZ</b> =Bronze <b>BK</b> =Black <b>WH</b> =White <b>DP</b> =Dark Platinum <b>GM</b> =Graphite Metallic	<b>F</b> =Single Fuse (120, 277 or 347V) <b>FF</b> =Double Fuse (208, 240 or 480V) <b>L</b> =Lamp Included <sup>11</sup> <b>R1</b> =Provisional cut for GFI Receptacle <sup>12</sup> <b>R2</b> =Installed GFI Receptacle <sup>12</sup> <b>PL</b> =Polycarbonate Lens <sup>13</sup> <b>CF/EM</b> =Emergency Battery Pack

## NOTES:

1. HID lamps are medium-base.
2. 35W HPS available in 120V only.
3. Available with clear lamp only.
4. Nominal length not to exceed 7".
5. Only available in 120 volts.
6. Consult an Cooper Lighting Solutions representative for lamp/ballast type/voltage compatibility.
7. Multi-Tap ballast is 120/208/240/277V wired 277V. Triple-Tap ballast is 120/277/347V wired 347V.
8. Compact Fluorescent only Electronic ballast universal voltage 120-277V.
9. Pulse start metal halide 150W 480V requires high reactance to meet EISA requirements.
10. Other finish colors available, including a full line of RAL color matches. Consult your Cooper Lighting Solutions Representative.
11. Coated lamp standard. Must specify clear lamp if desired.
12. Location of R1 and R2 option on housing subject to height of luminaire.
13. Available with BSC only.