

PHILIPS hue

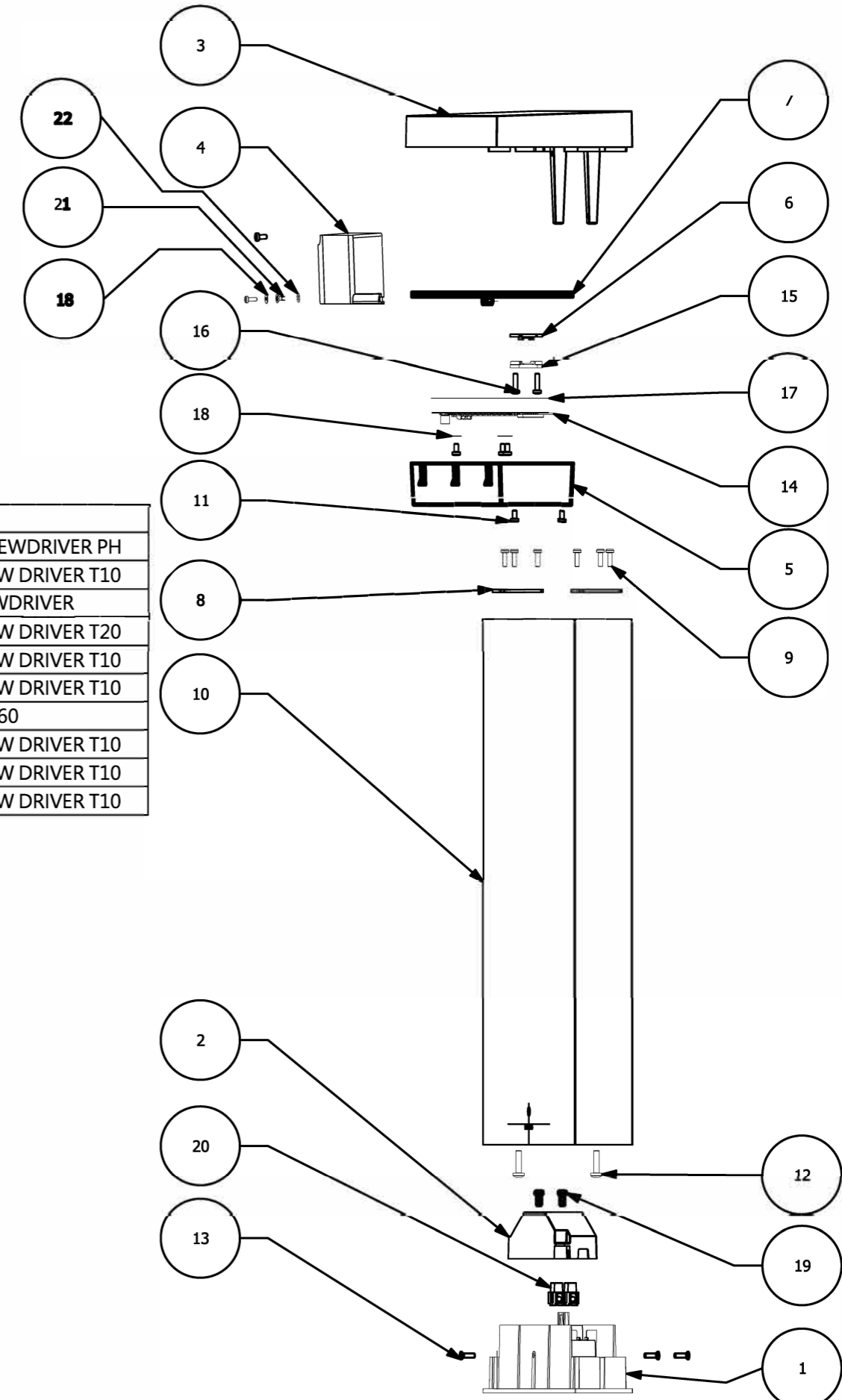
Warnings

Always make sure the luminaire is detached from the mains socket
 Always make sure the DC cable is detached from the power supply
 Staring at the operating light source may cause eye injury

#	Disassemble/dismantle steps	To ds needed
a	Unscrew 3 screws [13] and take out entire subassembly [1]+[2]+[19]+[20] from profile [2]	CROSSHEAD SCREWDRIVER PH
b	Unscrew 2 screws [19] and remove cover [2]	TORXHEAD SCREW DRIVER T10
c	Take out terminal block [20] from cover [2] and remove wires of the control gear - psu [4] by unscrewing	FLATHEAD SCREWDRIVER
d	Unscrew 2 screws [12] and remove profile [10] from base [3]	TORXHEAD SCREW DRIVER T20
e	Unscrew 6 screws [9] and remove 2 plates [8] from profile [10]	TORXHEAD SCREW DRIVER T10
f	Unscrew 2 screws [11] and remove diffuser [5] and gasket [7] from base [3]	TORXHEAD SCREW DRIVER T10
g	Unplug wires of control gear-psu [4] from light source-led module [14]	WAGO TOOL #2060
h	Unscrew 2 screws [16] and remove 2 pull reliefs [6]+[15]	TORXHEAD SCREW DRIVER T10
i	Unscrew 2 screws [11] and remove control gear-psu [4],tooth washer [22]+ring tongue [21] and washer [18] from base [3]	TORXHEAD SCREW DRIVER T10
j	Unscrew 3 screws [11] and remove light source-led module [14], gasket [7] and washers [18] from base [3]	TORXHEAD SCREW DRIVER T10

#	COMPONENT	QTY
1	BASE	1
2	COVER	1
3	BASE	1
4	CONTROL GEAR - PSU	1
5	DIFFUSER	1
6	PULL RELIEF	1
7	GASKET	1
8	PLATE	2
9	SCREW	6
10	PROFILE	1
11	SCREW	7
12	SCREW	2
13	SCREW	3
14	LIGHT SOURCE - LED MODULE	1
15	PULL RELIEF	1
16	SCREW	2
17	INSULATION	1
18	WASHER	4
19	SCREW	2
20	TERMINAL BLOCK	1
21	RING TONGUE	1
22	TOOTH WASHER	1

SKU	Color	Country
915005841601	black	



STATUS	DESCRIPTION	DESIGN ID	02	2022-05-25
	Nyro Hue WACA pedestal black			
	Nyro Pedestal Disassembly instruction	DOC 12NC		
NAME	Ku Pa	LOCAL PART ID	SH. 1	SH. 511
CHECKED		DATE	2021-06-30	A3-L