

PHILIPS

hue personal
wireless
lighting

wall switch module



User manual
Benutzerhandbuch
Notice d'emploi
Manual de usuario
Manual do usuário
Manuale d'uso

Incl.



x2



x2



x4



Excl.





EN Work on Electrical installations is in some countries only allowed by a qualified electrician. For support contact a local electrician or authority.

DE Die Arbeit an Elektroinstallationen ist in einigen Ländern nur qualifizierten Elektrikern gestattet. Wenden Sie sich zur Unterstützung an einen Elektriker oder eine Behörde vor Ort.

FR Dans certains pays, les travaux sur les installations électriques ne peuvent être effectués que par des électriciens qualifiés. Pour toute demande d'assistance, veuillez contacter un électricien ou votre autorité locale.

ES En algunos países, únicamente los electricistas cualificados pueden trabajar en instalaciones eléctricas. Si necesitas asistencia, ponte en contacto con la autoridad o con un electricista local.

IT In alcuni paesi, solo gli elettricisti qualificati possono svolgere lavori relativi alle installazioni elettriche. Per informazioni, contatta il tuo elettricista di fiducia oppure l'autorità preposta.

PT Em alguns países, apenas os eletricitistas qualificados podem realizar trabalho em instalações elétricas. Para obter assistência, contacte um eletricitista ou uma autoridade local.



EN The electrical circuit and attached light source will always be powered after installation, turn off the circuit when replacing a light fixture / battery.

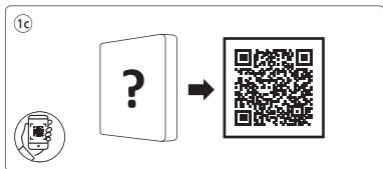
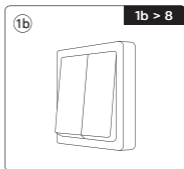
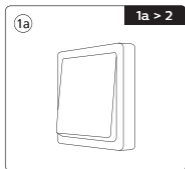
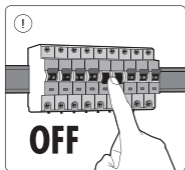
DE Der Stromkreis und die angeschlossene Lichtquelle werden nach der Installation immer mit Strom versorgt. Schalten Sie daher den Stromkreis aus, wenn Sie eine Leuchte / Batterie austauschen.

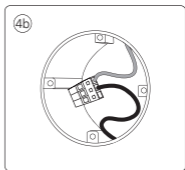
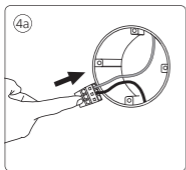
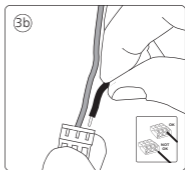
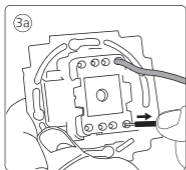
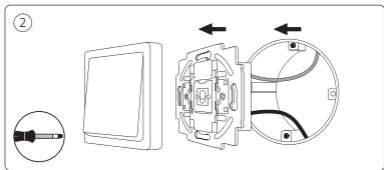
FR Le circuit électrique et la source lumineuse raccordée seront toujours alimentés après l'installation. Par conséquent, mettez le circuit hors tension lors du remplacement d'un luminaire / pile.

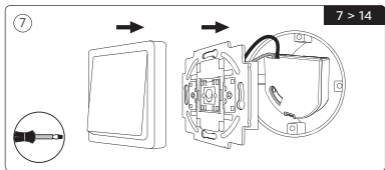
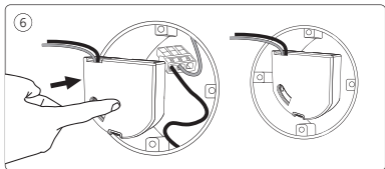
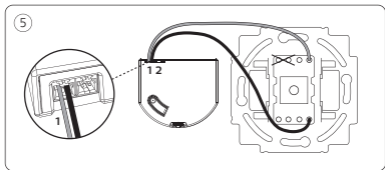
ES Tras la instalación, el circuito eléctrico y la fuente de luz conectada siempre tendrán alimentación eléctrica. Apaga el circuito cuando cambies una luminaria / batería.

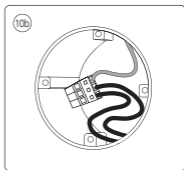
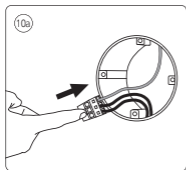
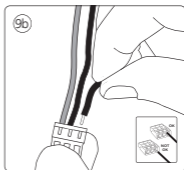
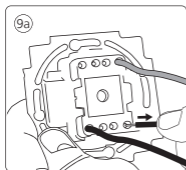
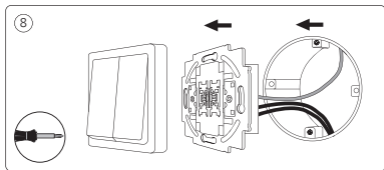
IT Dopo l'installazione, il circuito elettrico e la sorgente luminosa collegata rimangono sempre alimentati. Spegni il circuito per sostituire l'apparecchio per illuminazione / batteria.

PT O circuito elétrico e a fonte de luz associada estarão sempre ligados à alimentação após a instalação. Quando substituir um equipamento de luz / pilha, desligue o circuito.

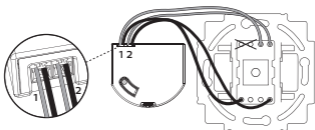




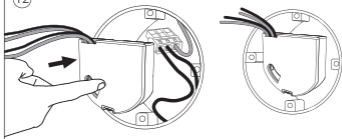




11

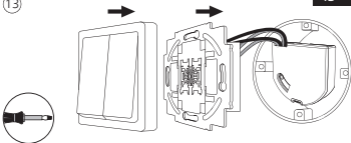


12

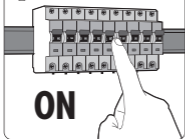


13

13 > 14



14



!



Internet

15

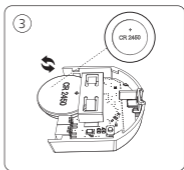
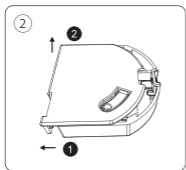
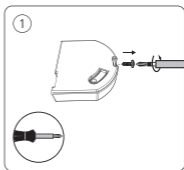
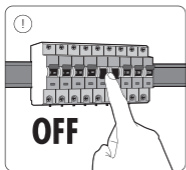


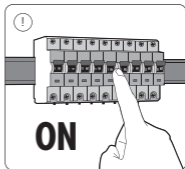
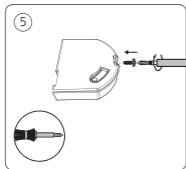
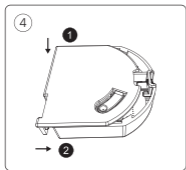
!



www.philips-hue.com

www.philips-hue.com/wallswitchmodulesupport







Signify
I.B.R.S. / C.C.R.I. Numéro 10461
5600 VB Eindhoven,
the Netherlands
☎00800-74454775

www.philips-hue.com

© 2023 Signify Holding
All rights reserved

3222 639 06152
Last update: 02/2023