



# Coreline tempo medium

## BVP125 LED80-4S/740 PSU OFA52 ALU C1KC3

Coreline tempo medium, Floodlight, 57 W, 8000 lm, 4000 K, CRI70, Asymmetrical, IP66

Floodlight, Aluminium, Grey, Power supply unit (On/Off), 8000 lm, 57 W, 144 lm/W, 4000 K, (0.382, 0.379) SDCM <5, CRI70, Asymmetrical, IP66 | Dust penetration-protected, jet-proof, IK08 | 5 J vandal-protected, Safety class I, Surge protection level until 6 kV differential mode and 8 kV common mode, Cable 1.0 m with plug Wieland/Adels compatible 3-pole, External connector

### Product data

General Information		Operating and Electrical	
Lamp family code	LED80-4S [LED module, system flux 8000 lm]	Luminous efficacy (rated) (nom.)	144 lm/W
Light source replaceable	No	Colour rendering index (CRI)	70
Number of gear units	Unit	Light source colour	740 neutral white
Driver included	Yes	Luminaire light beam spread	9° - 41° x 102°
Light source engine type	LED	Optic type outdoor	Asymmetrical
Service Tag	Yes	Effective projected area	0.09 m <sup>2</sup>
Lighting Technology	LED	Input Voltage	220 to 240 V
Value ladder	Performance	Line Frequency	50 to 60 Hz
Warranty period	5 years	Inrush current	53 A
		Inrush time	0.3 ms
		Power Consumption	57 W
		Power Factor (Fraction)	0.94
		Connection	External connector
Light Technical			
Upwards light output ratio	0		
Luminous Flux	8,000 lm		
Correlated Colour Temperature (Nom)	4000 K		

## Coreline tempo medium

Cable	Cable 1.0 m with plug Wieland/Adels compatible 3-pole
Number of products on MCB (16 A type B)	8
Protection class IEC	Safety class I
Surge Protection (Common/Differential)	Surge protection level until 6 kV differential mode and 8 kV common mode
Total harmonic distortion	9.4 %

### Controls and Dimming

Dimmable	No
Driver/power unit/transformer	Power supply unit (On/Off)
Constant light output	No

### Mechanical and Housing

Housing material	Aluminium
Reflector material	-
Optic material	Polycarbonate
Optical cover/lens material	Glass
Fixation material	Aluminium
Housing Colour	Grey
Mounting device	Wall-mounting bracket
Optical cover/lens shape	Flat
Optical cover/lens finish	Clear
Overall length	340.5 mm
Overall width	265 mm
Overall height	67.4 mm
Dimensions (height x width x depth)	67 x 265 x 341 mm
Ingress protection code	IP66 [Dust penetration-protected, jet-proof]
Mech. impact protection code	IK08 [5 J vandal-protected]
Standard tilt angle post-top	0°
Standard tilt angle side entry	0°
Optical cover type	Flat glass
Net Weight (Piece)	5.000 kg

### Emergency Operation

Central Emergency	No
-------------------	----

### Approval and Application

Flammability mark	For mounting on normally flammable surfaces
CE mark	Yes
ENEC mark	ENEC mark
Photobiological risk	Photobiological risk group 1 @200mm to EN62778
EU RoHS compliant	Yes
Performance ambient temperature Tq	25 °C
Remarks	* – According to the Lighting Europe guidance paper 'Evaluating the performance of LED -based luminaires – January 2018': statistically there is no relevant difference in lumen maintenance between the B50 and, for example, the B10. Therefore, the median

	useful life (B50) value also represents the B10 value. * At extreme ambient temperatures the luminaire might automatically dim down to protect components
--	---

Ambient temperature range	-40 to +45 °C
---------------------------	---------------

### Initial Performance (IEC Compliant)

Luminous flux tolerance	+/-7%
Initial chromaticity	(0.382, 0.379) SDCM <5
Power consumption tolerance	+/-10%
Init. Colour Rendering Index Tolerance	+/-2
Standard Deviation of Colour Matching (McAdam ellipse)	SDCM≤5

### Over Time Performance (IEC Compliant)

Control gear failure rate at median useful life 50,000 h	10 %
Control gear failure rate at median useful life 100,000 h	10 %
Lumen maintenance (EN-IEC 62722-2-1) at median useful life* 75000 h	L80
Lumen maintenance (EN-IEC 62722-2-1) at median useful life* 100000 h	L90

### Sustainability Data

Sustainability rating	Unclassified
Repair class	Repair Class D, this product is not designed to be repaired.
Embedded carbon (A1-A3)	63.5 kg CO <sub>2</sub> e
Product non-virgin material ratio	4.84 %
Recyclable the content ratio of the finished product	50.4 %
GWP total B6 (kg CO <sub>2</sub> eq) Declared Unit	Please calculate using your local energy mix value: Power Declared Unit (kW) * Service life (hrs) Declared Unit * Energy mix (kg CO <sub>2</sub> eq / kWh)
GWP total B6 (kg CO <sub>2</sub> eq) Functional Unit	Please calculate using your local energy mix value: POWER DECLARED UNIT (kW) * 1000 (lm) / LUMEN OUTPUT DECLARED UNIT (lm) * 35000 (hrs) * ENERGY MIX (kg CO <sub>2</sub> eq / kWh)

### Product Data

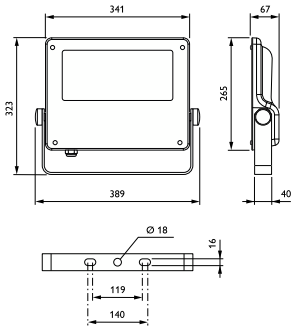
Order product name	BVP125 LED80-4S/740 PSU OFA52 ALU C1KC3
Full product name	BVP125 LED80-4S/740 PSU OFA52 ALU C1KC3
Full EOC	871869945588000
Order code	912300024002
Material no. (12 NC)	912300024002
Numerator – quantity per pack	1

# Coreline tempo medium

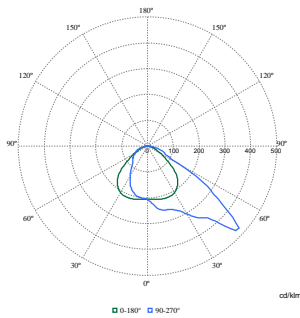
EAN/UPC – Product/Case	8718699455880
Numerator – packs per outer box	1
EAN/UPC - Case	8718699455880

Product family code	BVP125 [Coreline tempo medium]
---------------------	--------------------------------

## Dimensional drawing



## Photometric data



Polar Normal (separate) - BVP125I - 912300024002

