

HID-Basic BSN/BMH MK4 semi-parallel for SON/CDO/CDM/MH/HPI

BSN 400 K407-A2-ITS 230/240V 50Hz BC3

Impregnated electromagnetic copper ballasts for use with an external semi-parallel ignitor for CDM, CDO, MH, HPI (Plus) and SON lamps

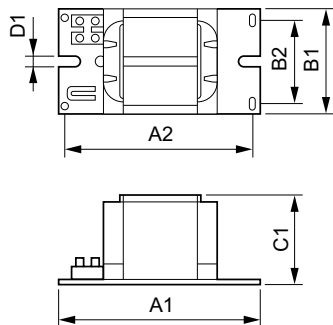
Product data

Operating and Electrical	
Input Voltage	230 V (default) or 240 V
Line Frequency	50 Hz
Input frequency	50 Hz
Wiring	
Connector type	Screw
Mechanical and Housing	
Net Weight (Piece)	4.950 kg
Approval and Application	
Approval marks	CE marking ENEC certificate
CE mark	Yes

Product Data	
Order product name	BSN 400 K407-A2-ITS 230/240V 50Hz BC3
Full product name	BSN 400 K407-A2-ITS 230/240V 50Hz BC3
Full EOC	872790088704400
Order code	913700277826
Material no. (12 NC)	913700277826
Local order code	BSN400K407ITS
Numerator – quantity per pack	1
EAN/UPC – Product/Case	8711500881571
Numerator – packs per outer box	2
EAN/UPC – Case	8727900887044

HID-Basic BSN/BMH MK4 semi-parallel for SON/CDO/CDM/MH/HPI

Dimensional drawing



Product	D1	C1	A1	A2	B1	B2
BSN 400 K407-A2-ITS	6.5 mm	83.0 mm	166.0 mm	145.0 mm	97.0 mm	78.5 mm
230/240V 50Hz BC3						

