

HF-Matchbox Red

HF-M RED 118 SH PL-C/PL-T 230-240V

HF-Matchbox Red is an affordable, reliable, compact, lightweight and high-frequency ballast for use with system wattages below 25 W in combination with TL mini, TL-D, TL5 and TL5c, PL-T/C, and PL-L/S lamps. The HF-M Red range has a robust design, meets all relevant international safety and performance standards and has an energy efficiency index (CELMA EEI) of A2.

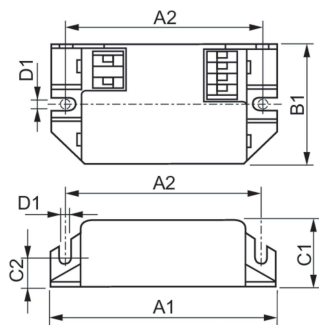
Product data

Operating and Electrical	
Input Voltage	230 to 240 V
Line Frequency	50 to 60 Hz
Input frequency	50 to 60 Hz
Number of products on MCB (16 A type B) (nom.)	73
Wiring	
Connector type input terminals	Insert
Colour input terminals	Orange
Colour output terminals	Grey
Connector type output terminals	Insert
Cable length from device to lamp	1.50 m
Temperature	
T-Case maximum (max.)	75 °C
Mechanical and Housing	
Housing	SH
Ingress protection code	IP20 [Finger-protected]
Net Weight (Piece)	0.034 kg

Approval and Application	
Approval marks	F-Marking CE marking ENEC certificate CB certificate
CE mark	Yes
Ambient temperature range	-10°C to 40°C
Product Data	
Order product name	HF-M RED 118 SH PL-C/PL-T 230-240V
Full product name	HF-M RED 118 SH PL-C/PL-T 230-240V
Full EOC	871150092802330
Order code	913700423466
Material no. (12 NC)	913700423466
Local order code	HFMRED118SH
Numerator – quantity per pack	1
EAN/UPC – Product/Case	8711500928023
Numerator – packs per outer box	50
EAN/UPC – Case	8711500928030

HF-Matchbox Red

Dimensional drawing



Product	D1	C1	C2	A1	A2	B1
HF-M RED 118 SH PL-C/PL- T 230-240V	4.4 mm	22.0 mm	10.0 mm	80.0 mm	70.0 mm	40.0 mm

