

PHILIPS

3 Pin socket

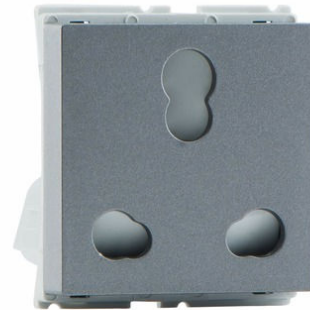
Switches & Sockets

Metallica

Grey

2 Module

913713971001



Create impression with a Metallic touch

Add décor to your home with Philips Metallica range.

Easy to use

- Shrouded terminals with captive screws
- Front insertion & front removal
- Glossy finish
- Low insert height
- Dual shutter technology
- Convenient grip for plug

Safe to use

- FR Grade Polycarbonate Material
- ISI mark
- Safe to use even with wet hands

Longer lifetime

- Brass terminals
- Brass screw

Safe for kids

- Dual shutter technology

Choose for a sustainable solution

- RoHS compliant

Highlights

Shrouded terminals with captive screws

Shrouded terminals for easy installation. Screws won't come out during wire fixing.

Front insertion & front removal

Smart way to preserve your designer walls, remove your switch/socket without dismantling the plates. Inserts can be fixed or removed from front.

Glossy finish

Glossy external finish for easy to clean and long lasting finish.

Low insert height

Low insert height so that you get more space for wiring inside the installed box.

Dual shutter technology

Even 2 Pin Plug can be inserted easily without the help of any screw driver/pencil to hold the top shutter.

Convenient grip for plug

Convenient gripping inside the socket for the inserted plug for better connectivity.

FR Grade Polycarbonate Material

Best quality polycarbonate material which doesn't catch fire easily, Material also clears the Glow Wire Test @ 850 Degree Celsius.

ISI mark

ISI mark (tested as per Indian standard IS3854).

Safe to use even with wet hands

No seepage of water due to precision & covered design.

Brass terminals

Brass terminal for connection for longer, uninterrupted life.

Brass screw

Brass screw for longer, carefree operations.

Dual shutter technology

Separate in-built shutter for L/N pin & earth pin make easy fitment even for 2 pin plug, also makes it safer even when kids are around. Separate shutter prevents from accidental finger insertion.

RoHS compliant

All the switches/sockets are free from any hazardous substance to the environment making it safe to use.

Specifications

Design and finishing

- Color: Grey
- Material: PC
- Module/Gang: 2 Module
- Socket/connector Type: Combination Socket
- Product Range: Metallica
- Minimum Installation Box Depth: 5 cm

Durability

- Number of Operation Cycles: 5,000

Interactivity

- Current (A): 16

Other characteristics

- Installation Type: Fast Installation
- Indicator Type: No Indicator

Power

- Electrical Load Type: Resistive load

Power consumption

- Voltage: 240 V

Product dimensions and weight

- Length: 5 cm
- Width: 4.5 cm
- Depth: 4.2 cm

Service

- Warranty: 2 year(s)

Technical specifications

- Frequency: 50 Hz

Packaging dimensions and weight

- EAN/UPC - product: 8718699652586
- Net weight: 0.03 kg
- Gross weight: 0.04 kg
- Height: 4.2 cm
- Length: 5 cm
- Width: 4.5 cm
- Material number (12NC): 913713971001



Issue date: 2024-02-02
Version: 0.33

© 2024 Signify Holding. All rights reserved. Signify does not give any representation or warranty as to the accuracy or completeness of the information included herein and shall not be liable for any action in reliance thereon. The information presented in this document is not intended as any commercial offer and does not form part of any quotation or contract, unless otherwise agreed by Signify. Philips and the Philips Shield Emblem are registered trademarks of Koninklijke Philips N.V.

www.lighting.philips.com