

# PHILIPS

IP65 dust-proof and water-resistant outdoor wall light

myGarden

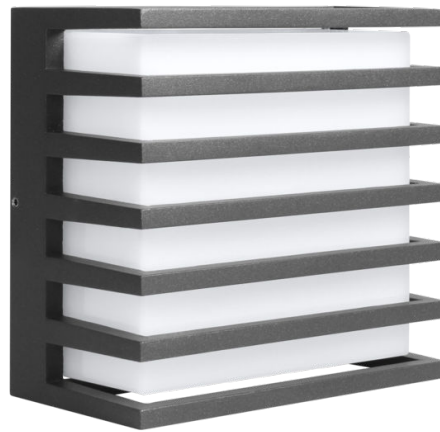
10W; Warm White; 450 lumen;  
In-built LED;

Dust-proof and water resistant;

Powder-coated premium aluminium fixture;

Perfect for outdoor walls in garden, patio, poolside

919215851060



## Bring your outdoors alive!

This elegantly designed wall light is easy to install. It comes with soft corners and anthracite colours accentuate the gentle throw of the light. Now easily light up your balcony/patio, poolside with evenly distributed, comfort lights

**Bring design into your garden**

- Decorative outdoor lighting

# Highlights

## Decorative outdoor lighting

Outdoor lighting can improve the look of your garden or outside space, illuminating eye-catching features,

lighting pathways with style or creating the perfect ambience for those memorable evenings with friends and family. This Philips outdoor light

provides beautiful decorative outdoor lighting with the flair and functionality to help you make the most of your outdoor space in your own style.

# Specifications

## Bulb characteristics

- Intended use: Outdoor

## Design and finishing

- Color: Anthracite Grey
- Material: Aluminium

## Extra feature/accessory incl.

- 4 light recipes: No
- 5 years warranty on the LED module: No
- Adjustable height: No
- Adjustable spot head: No
- Batteries included: No
- Bi-directional light beams: No
- Candle light effect: No
- Centerpiece: No
- Choose your color: No
- Clamp included: Yes
- Color changing (LED): No
- Day-and-night sensor: No
- Defined light beams: No
- Fully weatherproof: Yes
- Hue bridge included: No
- Hue Switch: No
- Hue Switch Included: No
- LED integrated: Yes
- Perfectly suited for ambience creation: Yes
- Premium quality material: Yes
- Waterproof: Yes

## Light characteristics

- Color rendering index (CRI): 80

## Miscellaneous

- Especially designed for: Garden & Patio
- Style: Contemporary

## Product dimensions and weight

- Net weight: 1.521 kg
- Height: 9.9 cm
- Height maximum: 9.9 cm
- Length: 16.7 cm
- Width: 16.7 cm

## Service

- Warranty: 1 year(s)

## Technical specifications

- Lamp lifetime up to: 20,000 hour(s)
- Lumen output bulb included: 450 lm
- Total lumen output fixture: 450
- Bulb technology: LED
- Light color: warm white
- Mains power: 220-240 V
- LED: Yes
- Built in LED: Yes
- Energy class included light source: built in LED + bulb of class A+
- IP code: IP65

## Packaging dimensions and weight

- EAN/UPC - product: 8720169169593
- Net weight: 1.52 kg
- Gross weight: 1.53 kg
- Height: 18 cm
- Length: 17.4 cm
- Width: 11.4 cm
- Material number (12NC): 919215851060



Issue date: 2024-02-02  
Version: 0.97

© 2024 Signify Holding. All rights reserved. Signify does not give any representation or warranty as to the accuracy or completeness of the information included herein and shall not be liable for any action in reliance thereon. The information presented in this document is not intended as any commercial offer and does not form part of any quotation or contract, unless otherwise agreed by Signify. Philips and the Philips Shield Emblem are registered trademarks of Koninklijke Philips N.V.

[www.lighting.philips.com](http://www.lighting.philips.com)