



# Double Ended Linear

## Double Ended Linear BC300T3Q/CL/TP 120V 6/2PK

High-quality white light with superior lumen performance. Halogen Double Ended lamps provide bright,white light for work lights and security lighting. Rugged construction for busy work sites. Offered in several lengths to meet most application needs.High lumen output provides light where you need it.

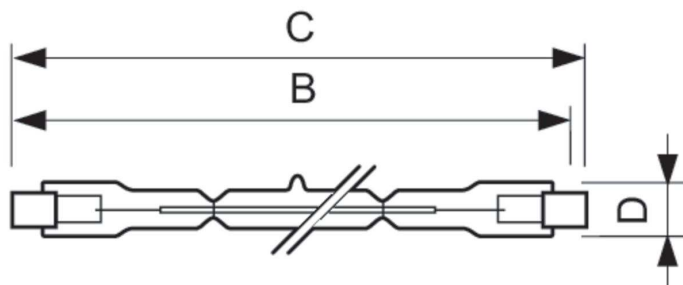
### Product data

General Information	
Cap-Base	R7s
Operating Position	P4 [Parallel +/-4D or Horizontal(HOR)]
Nominal lifetime	2,000 hour(s)
Rated Lifetime (Hours)	2,000 hour(s)
Lighting Technology	Halogen
Light Technical	
Luminous Flux	5,000 lm
Luminous Efficacy (rated) (Nom)	16 lm/W
Correlated Color Temperature (Nom)	2900 K
Color rendering index (CRI)	100
Operating and Electrical	
Power Consumption	300 W
Lamp Current (Nom)	2.5 A
Starting Time (Nom)	0.0 s
Voltage (Nom)	120 V
Controls and Dimming	
Dimmable	Yes

Mechanical and Housing	
Bulb Finish	Clear
Bulb Shape	T3
Product Data	
Order product name	300W RSC Sparkling light Work and Security Light
Full product name	Double Ended Linear BC300T3Q/CL/TP 120V 6/2PK
Order code	415711
Material Nr. (12NC)	924884936301
Numerator - Quantity Per Pack	2
Net Weight (Piece)	0.022 lb
EAN/UPC - Product/Case	046677415716
Numerator - Packs per outer box	6
EAN/UPC - Case	50046677415711

Double Ended Linear

Dimensional drawing



Product	D (max)	B (max)	B	B (min)	C (max)
300W RSC Sparkling light	1/2 inch	4-9/16 inch	4-1/2 inch	4-7/16 inch	4-5/8 inch
Work and Security Light					

