



CorePro LED PLC 4P



CorePro LED PLC 9W 840 4P G24q-3

The CorePro LED PLC 4P integrates a LED light source into a traditional fluorescent form factor. This product is the ideal solution for uplamping in general lighting applications: it meets basic lighting requirements, offers significant energy savings and is environmentally friendly.

Product data

General Information		Lamp current (max.)	
Cap base	G24q-3		400 mA
Nominal lifetime	30,000 h	Lamp current (min.)	250 mA
Switching Cycle	50,000	Starting time (nom.)	0.5 s
Lighting Technology	LED	Warm-up time to 60% light	0.5 s
Flux measurement reference	Sphere	Power Factor (Fraction)	0.9
		Voltage (nom.)	20-50 V
		LED alternative to fluorescent lamp power	26 W
		Inrush current at mains	-
		Max. lamp no. on MCB B type 10A – Mains	-
		Max. lamp no. on MCB B type 10A – EM ballast without Compensation Capacitor.	-
		Max. lamp no. on MCB B type 10A – EM ballast with Compensation Capacitor.	-
		Max. lamp no. on MCB B type 16A – Mains	-
		Max. lamp no. on MCB B type 16A – EM ballast without Compensation Capacitor.	-
		Max. lamp no. on MCB B type 16A – EM ballast with Compensation Capacitor.	-
		Ballast Compatibility	HF
Light Technical		Temperature	
Colour Code	840 [CCT of 4000K]	T-Case maximum (nom.)	76 °C
Beam angle (nom.)	120 degree(s)		
Luminous Flux	1,000 lm		
Colour designation	Cool White (CW)		
Correlated Colour Temperature	4000 K		
Luminous efficacy (rated) (nom.)	100.00 lm/W		
Colour consistency	<6		
Colour rendering index (CRI)	83		
LLMF at end of nominal lifetime (nom.)	70 %		
Photobiological safety according to EN 62471	RG0		
Operating and Electrical			
Line Frequency	30000-80000 Hz		
Input frequency	30000-80000 Hz		
Power Consumption	9 W		

CorePro LED PLC 4P

Controls and Dimming

Dimmable	No
----------	----

Mechanical and Housing

Product length	200 mm
Bulb shape	PL-C
Net Weight (Piece)	0.088 kg

Approval and Application

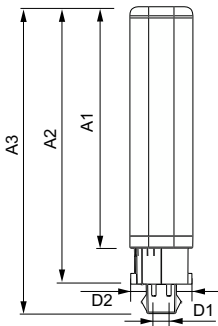
Energy Efficiency Class	F
Energy-saving product	Yes
Approval marks	RoHS compliance
Energy consumption kWh/1,000 hours	9 kWh
EPREL registration number	403551
CE mark	Yes
EU RoHS compliant	Yes

Ambient temperature range	-20°C to 35°C
---------------------------	---------------

Product Data

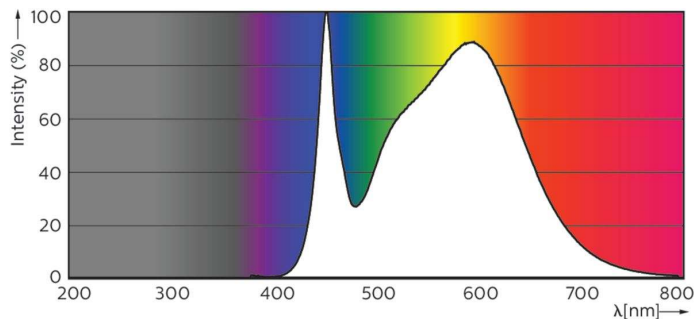
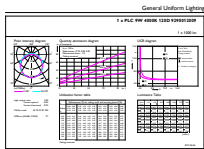
Order product name	CorePro LED PLC 9W 840 4P G24q-3
Full product name	CorePro LED PLC 9W 840 4P G24q-3
Full EOC	871869654117300
Order code	54117300
Material no. (12 NC)	929001200902
Numerator – quantity per pack	1
EAN/UPC – Product/Case	8718696541173
Numerator – packs per outer box	10
EAN/UPC – Case	8718696541180

Dimensional drawing



Product	D1	D2	A1	A2	A3
CorePro LED PLC 9W 840 4P G24q-3	24.3 mm	28.4 mm	128.8 mm	148 mm	163.6 mm

Photometric data

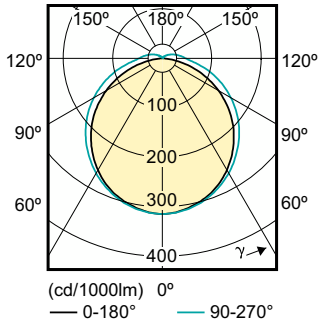


General uniform lighting - CorePro LED PLC 9W 840 4P G24q-3

Spectral Power Distribution Colour - CorePro LED PLC 9W 840 4P G24q-3

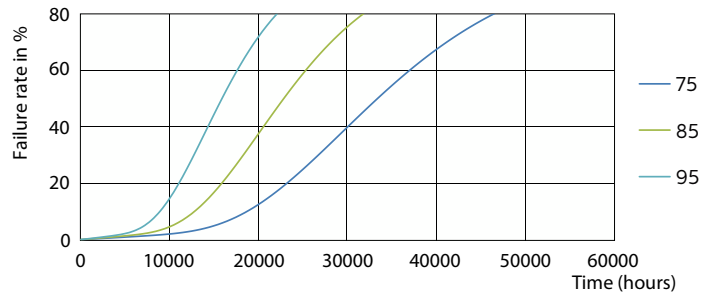
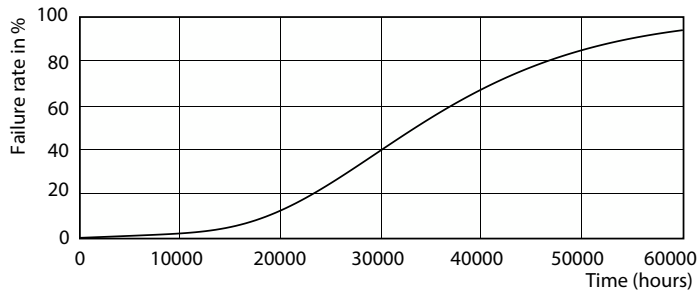
CorePro LED PLC 4P

Photometric data



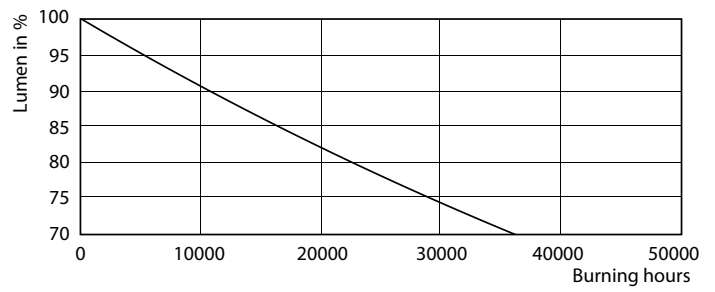
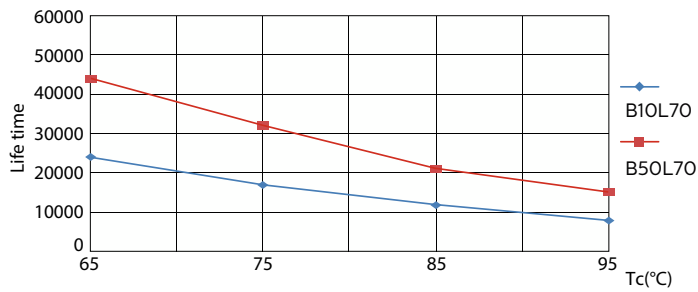
Light Distribution Diagram - CorePro LED PLC 9W 840 4P G24q-3

Lifetime



LEDtube PLC 100mm 9W G24Q-3 830 950lm

LEDtube PLC 100mm 9W G24Q-3 830 950lm

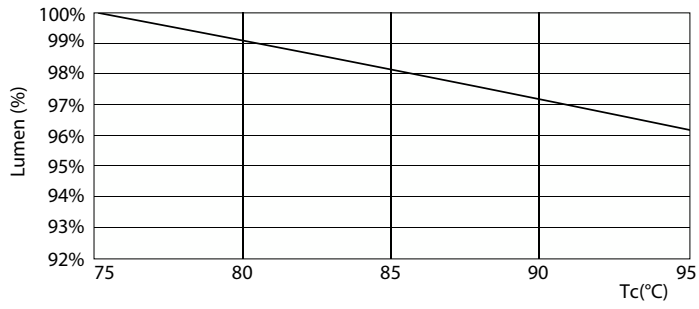


LEDtube PLC 100mm 9W G24Q-3 830 950lm

Lumen Maintenance Diagram - CorePro LED PLC 9W 840 4P G24q-3

CorePro LED PLC 4P

Lifetime



Lumen Maintenance Diagram - CorePro LED PLC 9W 840 4P G24q-3

