



Corepro InstantFit (UL Type-A) T8

14T8/COR/48-830/IF20/G/DIM 10/1

CorePro, LED, T8, 1200 mm, 14 W, 3000 K, 2000 lm, 70000 hour(s)

The CorePro InstantFit LED lamps provide hassle-free installation with simple lamp-for-lamp replacements. They deliver what we promise, with at least 40% energy savings, flicker-free performance, and the life you would expect. Other lamps claim compatibility but only CorePro InstantFit (UL Type A) has been proven to work with over 200 ballasts and drivers, delivering even light output, with proven energy savings and a long average lifetime. End users will be delighted being under these comfortable and high quality CorePro InstantFit lamps with no visible flicker and optimized optics. Energy managers will enjoy these lamps too as they can count the savings delivered by our lamps. To enjoy more energy savings, the CorePro InstantFit lamps can be paired with the Advance TLED drivers to create a Type C system.

Product data

General Information		Color Designation	
Cap-Base	G13	White (WH)	
Nominal lifetime	70,000 hour(s)	Correlated Color Temperature (Nom)	3000 K
Switching Cycle	50,000	Luminous Efficacy (rated) (Nom)	142.86 lm/W
Lighting Technology	LED	Color Consistency	<6
Light Technical		Color rendering index (CRI)	82
Color Code	830 [CCT of 3000K]	LLMF At End Of Nominal Lifetime (Nom)	70 %
Beam Angle (Nom)	220 degree(s)	Operating and Electrical	
Luminous Flux	2,000 lm	Line Frequency	25000-105000 Hz
		Input Frequency	25000-105000 Hz

Corepro InstantFit (UL Type-A) T8

Power Consumption	14 W
Lamp Current (Max)	260 mA
Lamp Current (Min)	100 mA
Wattage Equivalent	32 W
Starting Time (Nom)	0.5 s
Warm-up time to 60% light	0.5 s
Power Factor (Fraction)	0.9
Voltage (Nom)	120-277, 347 V
UL Type	UL Type A

Temperature

T-Case Maximum (Nom)	50 °C
----------------------	-------

Controls and Dimming

Dimmable	Yes
----------	-----

Mechanical and Housing

Bulb Finish	Frosted
Bulb Material	Glass
Product Length	1,200 mm
Bulb Shape	T8
Net Weight (Piece)	0.215 kg

Approval and Application

Energy Saving Product	Yes
Approval Marks	UL certificate RoHS compliance DLC compliance
Energy Certifications	DLC Standard
EU RoHS compliant	Yes
Ambient temperature range	-20 °C to 45 °C

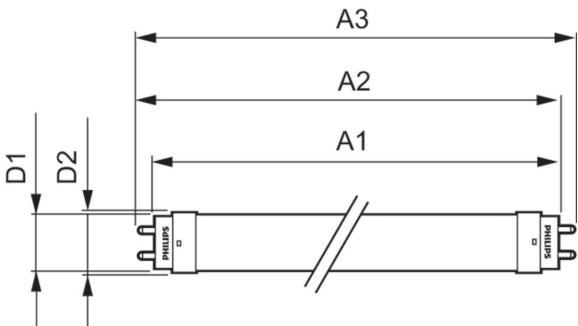
Application Conditions

can it be used in closed luminaires	Yes
-------------------------------------	-----

Product Data

Order product name	14T8/COR/48-830/IF20/G/DIM 10/1
Full product name	14T8/COR/48-830/IF20/G/DIM 10/1
Order code	470096
Material Nr. (12NC)	929001343034
Numerator - Quantity Per Pack	1
EAN/UPC - Product/Case	046677452407
Numerator - Packs per outer box	10
EAN/UPC - Case	50046677470093

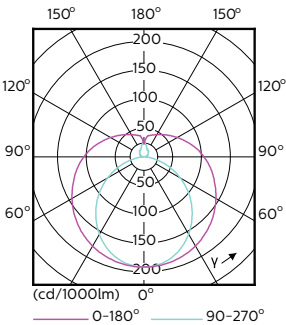
Dimensional drawing



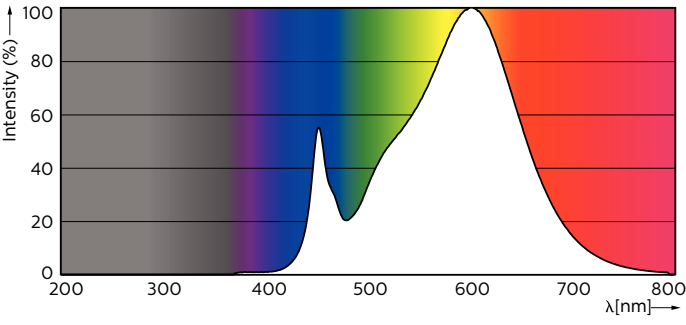
Product	D1	D2	A1	A2	A3
14T8/COR/48-830/IF20/G/DIM 10/1	25.7 mm	28 mm	1,198 mm	1,205 mm	1,212 mm

Corepro InstantFit (UL Type-A) T8

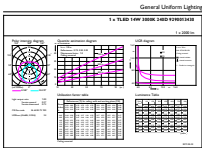
Photometric data



Light Distribution Diagram - 14T8/COR/48-830/IF20/G/DIM 10/1

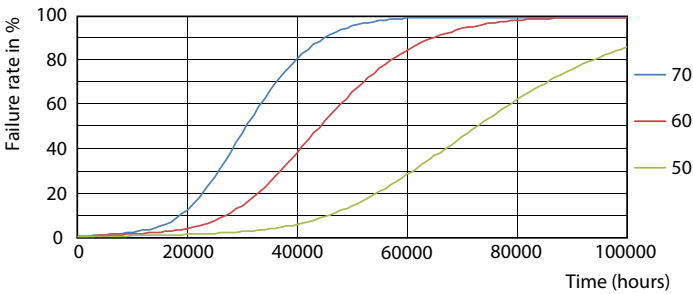


Spectral Power Distribution Colour - 14T8/COR/48-830/IF20/G/DIM 10/1

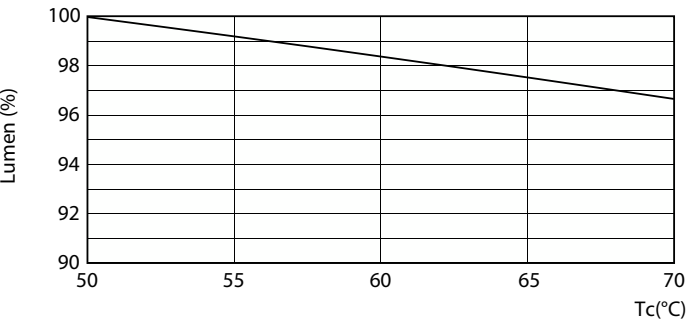


General uniform lighting - 14T8/COR/48-830/IF20/G/DIM 10/1

Lifetime



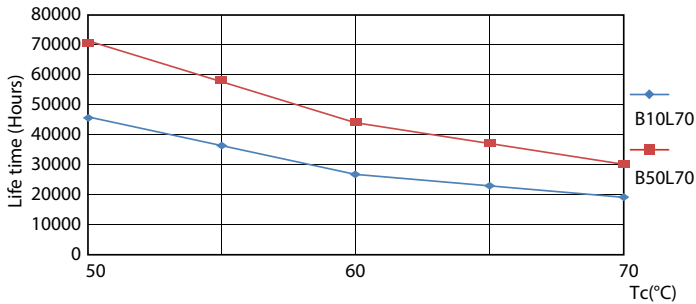
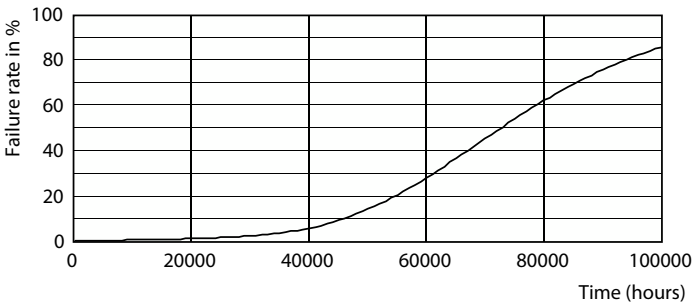
LEDtube 70K 5070 FailureRate-LED



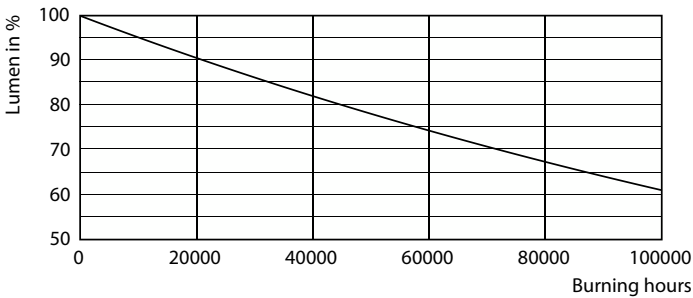
Lumen Maintenance Diagram - 14T8/COR/48-830/IF20/G/DIM 10/1

Corepro InstantFit (UL Type-A) T8

Lifetime



Life Expectancy Diagram



LEDtube 70K 5070 LifetimeVsTc-LED

Lumen Maintenance Diagram - 14T8/COR/48-830/IF20/G/DIM 10/1

