



CorePro LED PLL



CorePro LED PLL HF 16.5W 865 4P 2G11

CorePro, LED, PL-L, HF, 405 mm, 16.5 W, 36W PL-L, 6500 K, 2100 lm, CRI 83, 30000 h

Philips CorePro LED PLL is the ideal uplamping solution for downlights & luminaires in a wide range of general lighting applications. It integrates a LED light source into a traditional fluorescent form factor to offer superb energy savings over a lifetime that's twice as long as fluorescent alternatives.

Product data

General Information	
Cap base	2G11
Nominal lifetime	30,000 h
Switching Cycle	50,000
Lighting Technology	LED
Flux measurement reference	Sphere
Warranty period	3 years
Light Technical	
Colour Code	865 [CCT of 6500K]
Beam angle (nom.)	160 degree(s)
Luminous Flux	2,100 lm
Colour designation	Cool Daylight
Correlated Colour Temperature (Nom)	6500 K
Luminous efficacy (rated) (nom.)	127.00 lm/W
Colour consistency	<6
Colour rendering index (CRI)	83
LLMF at end of nominal lifetime (nom.)	70 %

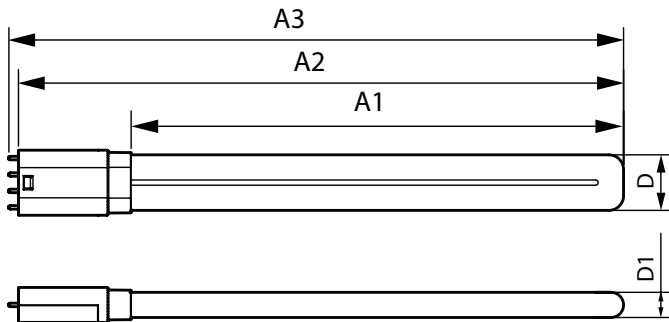
Photobiological safety according to EN 62471	RG0
Operating and Electrical	
Line Frequency	39000-71000 Hz
Input frequency	39000-71000 Hz
Power Consumption	16.5 W
Lamp current (max.)	420 mA
Lamp current (min.)	290 mA
Starting time (nom.)	0.5 s
Warm-up time to 60% light	0.5 s
Power Factor (Fraction)	0.9
Voltage (nom.)	53-77 V
LED alternative to fluorescent lamp power	36W PL-L
Inrush current at mains	-
Max. lamp no. on MCB B type 10A – Mains	-
Max. lamp no. on MCB B type 10A – EM ballast without Compensation Capacitor.	-
Max. lamp no. on MCB B type 10A – EM ballast with Compensation Capacitor.	-

CorePro LED PLL

Max. lamp no. on MCB B type 16A — Mains	-
Max. lamp no. on MCB B type 16A – EM ballast without Compensation Capacitor.	-
Max. lamp no. on MCB B type 16A – EM ballast with Compensation Capacitor.	-
Ballast Compatibility	HF
Temperature	
T-Case maximum (nom.)	70 °C
Controls and Dimming	
Dimmable	No
Mechanical and Housing	
Lamp Finish	Frosted
Bulb material	Glass
Product length	405 mm
Bulb shape	PL-L
Net Weight (Piece)	0.160 kg
Approval and Application	
Energy Efficiency Class	E
Energy-saving product	Yes
Approval marks	RoHS compliance CE marking KEMA Keur certificate

Energy consumption kWh/1,000 hours	17 kWh
EPREL Registration Number	387354
CE mark	Yes
EU RoHS compliant	Yes
Ambient temperature range	-20°C to 45°C
Application Conditions	
Wireless Technology	Not applicable
Product Data	
Order product name	CorePro LED PLL HF 16.5W 865 4P 2G11
Full product name	CorePro LED PLL HF 16.5W 865 4P 2G11
Full EOC	871869673976100
Order code	929001381702
Material no. (12 NC)	929001381702
Numerator – quantity per pack	1
EAN/UPC – Product/Case	8718696739761
Numerator – packs per outer box	10
EAN/UPC - Case	8718696739778

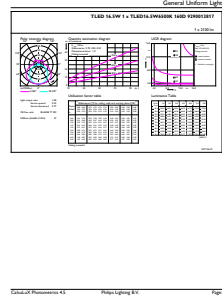
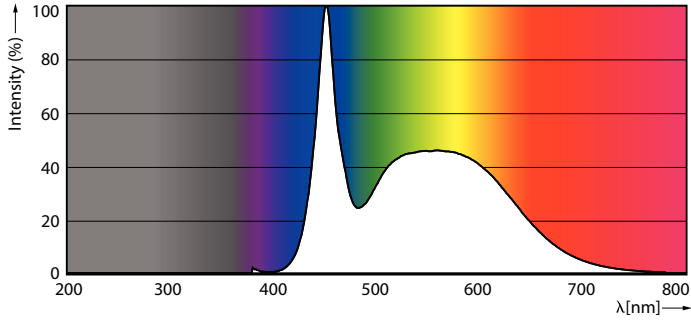
Dimensional drawing



Product	D1	D	A1	A2	A3
CorePro LED PLL HF 16.5W 865 4P 2G11	17 mm	38 mm	330 mm	405 mm	412 mm

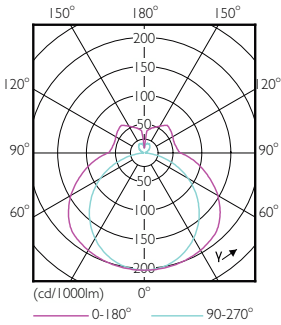
CorePro LED PLL

Photometric data



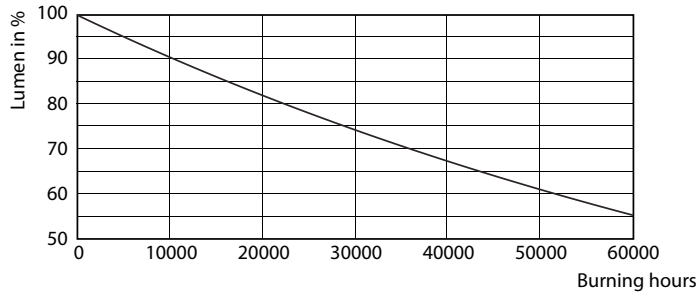
Spectral Power Distribution Colour - CorePro LED PLL HF 16.5W 865 4P 2G11

General uniform lighting - CorePro LED PLL HF 16.5W 865 4P 2G11

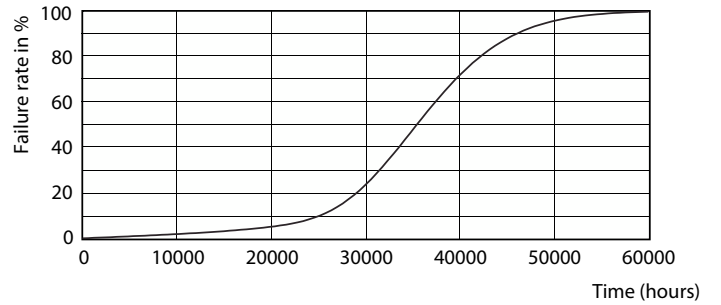


Light Distribution Diagram - CorePro LED PLL HF 16.5W 865 4P 2G11

Lifetime



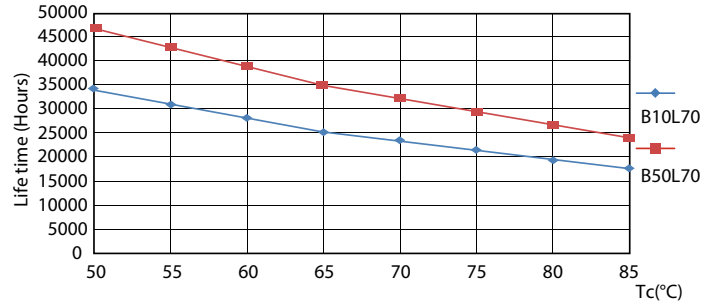
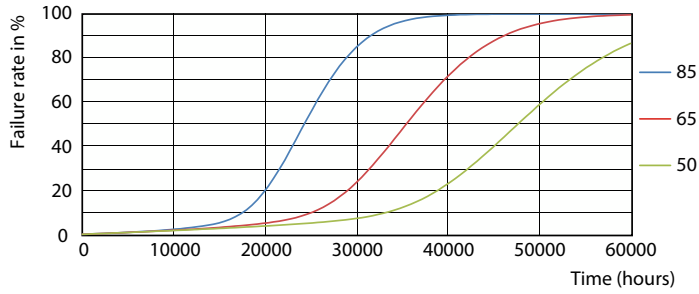
Lumen Maintenance Diagram - CorePro LED PLL HF 16.5W 865 4P 2G11



LEDtube PLC 400mm 16-5W 2G11 830 2000lm

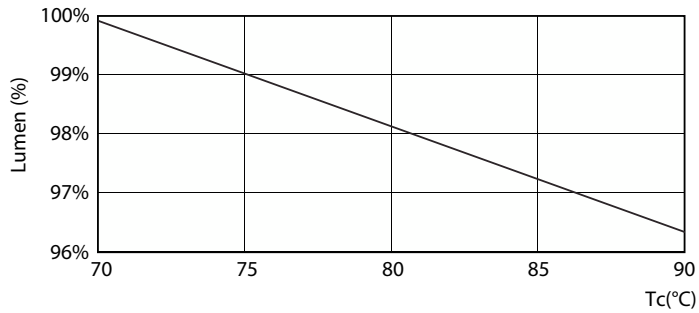
CorePro LED PLL

Lifetime



LEDtube PLC 400mm 16-5W 2G11 830 2000lm

LEDtube PLC 400mm 16-5W 2G11 830 2000lm



Lumen Maintenance Diagram - CorePro LED PLL HF 16.5W 865 4P 2G11

