



MASTER LEDtube InstantFit HF T5



Master LEDtube HF 600mm HE 8W 830 T5

The Philips MASTER LEDtube integrates an LED light source into a traditional fluorescent form factor. Its unique design creates a perfectly uniform visual appearance, which cannot be distinguished from traditional fluorescents. These T5 lighting tubes are the right choice for absolute performance and are designed to stand up to everyday conditions. Unparalleled savings, thanks to low energy consumption and an exceptionally long lifetime, make these T5 LED tubes the choice for every demanding applications.

Product data

General Information		Photobiological safety according to EN 62471	
Cap base	G5	RG0	
Nominal lifetime	60,000 h	Operating and Electrical	
Switching Cycle	50,000	Line Frequency	30K to 100K Hz
Lighting Technology	LED	Input frequency	30 K to 100 K Hz
Flux measurement reference	Sphere	Power Consumption	8 W
Light Technical		Lamp current (max.)	350 mA
Colour Code	830 [CCT of 3000K]	Lamp current (min.)	150 mA
Beam angle (nom.)	200 degree(s)	Starting time (nom.)	0.5 s
Luminous Flux	1,000 lm	Warm-up time to 60% light	0.5 s
Colour designation	White (WH)	Power Factor (Fraction)	0.92
Correlated Colour Temperature (Nom)	3000 K	Voltage (nom.)	40-70 V
Luminous efficacy (rated) (nom.)	125.00 lm/W	Ballast Compatibility	HF
Colour consistency	<6	LED alternative to fluorescent lamp power	14 W
Colour rendering index (CRI)	80	Inrush current at mains	-
LLMF at end of nominal lifetime (nom.)	70 %	Max. lamp no. on MCB B type 10A — Mains	-
		Max. lamp no. on MCB B type 10A – EM ballast without Compensation Capacitor.	-

MASTER LEDtube InstantFit HF T5

Max. lamp no. on MCB B type 10A – EM ballast with Compensation Capacitor.	-
Max. lamp no. on MCB B type 16A – Mains	-
Max. lamp no. on MCB B type 16A – EM ballast without Compensation Capacitor.	-
Max. lamp no. on MCB B type 16A – EM ballast with Compensation Capacitor.	-

Temperature

T-Case maximum (nom.)	65 °C
-----------------------	-------

Controls and Dimming

Dimmable	Yes – Check ballast compatibility
----------	-----------------------------------

Mechanical and Housing

Lamp Finish	Frosted
Bulb material	Glass
Product length	600 mm
Bulb shape	T5
Net Weight (Piece)	0.080 kg

Approval and Application

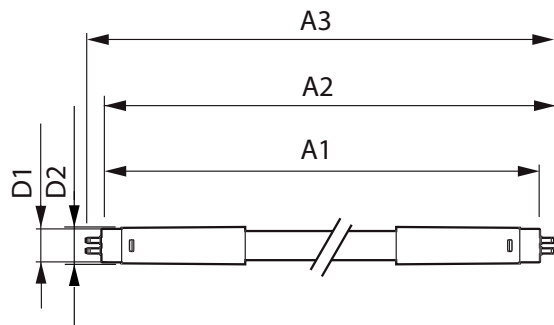
Energy Efficiency Class	E
-------------------------	---

Energy-saving product	Yes
Approval marks	RoHS compliance KEMA Keur certificate
Energy consumption kWh/1,000 hours	8 kWh
EPREL Registration Number	1384131
CE mark	Yes
EU RoHS compliant	Yes
Ambient temperature range	-20°C to 45°C

Product Data

Order product name	MAS LEDtube HF 600mm HE 8W 830 T5
Full product name	Master LEDtube HF 600mm HE 8W 830 T5
Full EOC	871869674323200
Order code	74323200
Material no. (12 NC)	929001390702
Numerator – quantity per pack	1
EAN/UPC – Product/Case	8718696743232
Numerator – packs per outer box	10
EAN/UPC - Case	8718696743249

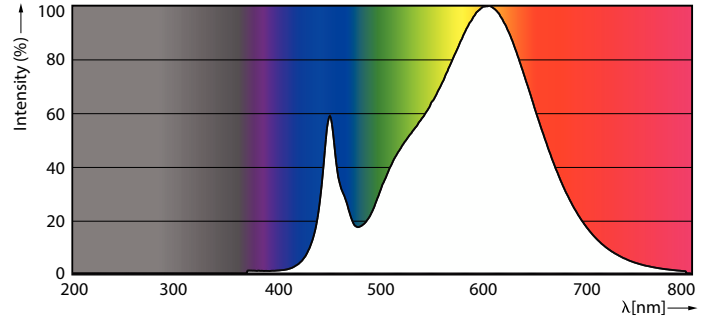
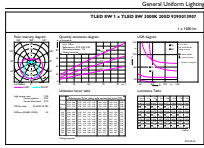
Dimensional drawing



Product	D1	D2	A1	A2	A3
MAS LEDtube HF 600mm HE 8W 830 T5	15.5 mm	18.8 mm	549 mm	556.1 mm	563.2 mm

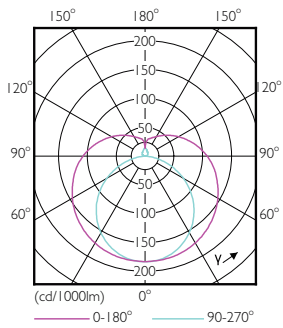
MASTER LEDtube InstantFit HF T5

Photometric data



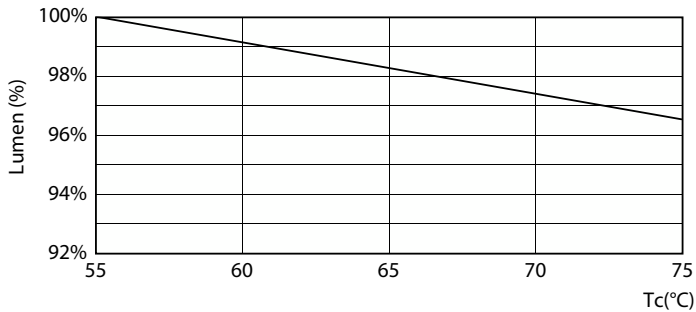
General uniform lighting - MAS LEDtube HF 600mm HE 8W 830 T5

Spectral Power Distribution Colour - MAS LEDtube HF 600mm HE 8W 830 T5

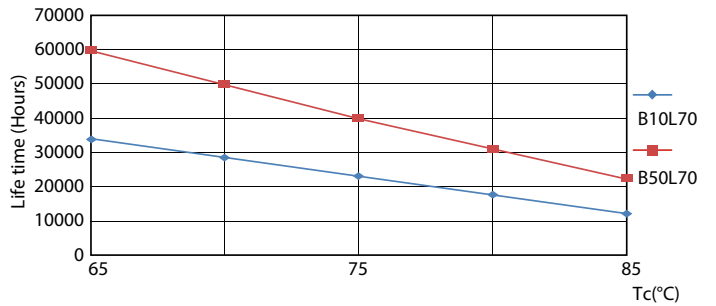


Light Distribution Diagram - MAS LEDtube HF 600mm HE 8W 830 T5

Lifetime



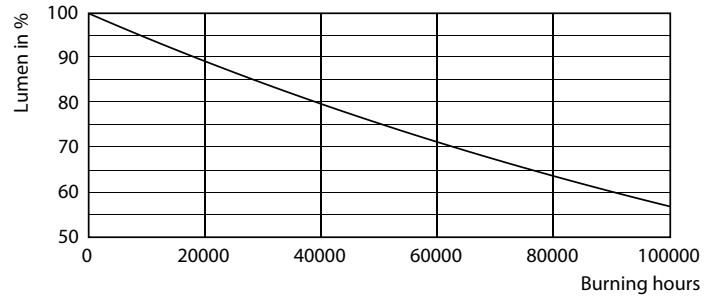
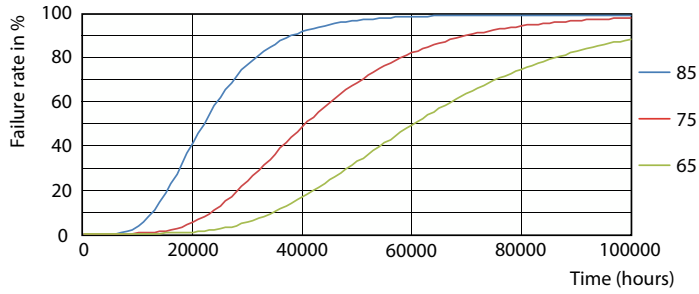
Lumen Maintenance Diagram - MAS LEDtube HF 600mm HE 8W 830 T5



LifetimeVsTc

MASTER LEDtube InstantFit HF T5

Lifetime



FailureRate

Lumen Maintenance Diagram - MAS LEDtube HF 600mm HE 8W 830 T5



Life Expectancy Diagram

