



# MASTER LED tube InstantFit HF T5



## MAS LEDtube HF 1200mm HE 16.5W 865 T5

MASTER, LEDtube, T5, HF, 1200 mm, 16.5 W, 28W TL5 HE, 6500 K, 2500 lm, CRI 80, 60000 h

The Philips MASTER LEDtube integrates an LED light source into a traditional fluorescent form factor. Its unique design creates a perfectly uniform visual appearance, which cannot be distinguished from traditional fluorescents. These T5 lighting tubes are the right choice for absolute performance and are designed to stand up to everyday conditions. Unparalleled savings, thanks to low energy consumption and an exceptionally long lifetime, make these T5 LED tubes the choice for every demanding applications.

### Product data

General Information	
Cap base	G5
Nominal lifetime	60,000 h
Switching Cycle	50,000
Lighting Technology	LEDtube
Flux measurement reference	Sphere
Warranty period	5 years
Light Technical	
Colour Code	865 [CCT of 6500K]
Beam angle (nom.)	200 degree(s)
Luminous Flux	2,500 lm
Colour designation	Cool Daylight
Correlated Colour Temperature (Nom)	6500 K

Luminous efficacy (rated) (nom.)	151 lm/W
Colour consistency	<6
Colour rendering index (CRI)	80
LLMF at end of nominal lifetime (nom.)	70 %
Photobiological safety according to EN 62471	RG0
Operating and Electrical	
Line Frequency	30K to 100K Hz
Input frequency	30 K to 100 K Hz
Power Consumption	16.5 W
Lamp current (max.)	350 mA
Lamp current (min.)	150 mA
Starting time (nom.)	0.5 s
Warm-up time to 60% light	0.5 s

# MASTER LED tube InstantFit HF T5

Power Factor (Fraction)	0.92
Voltage (nom.)	70-120 V
LED alternative to fluorescent lamp power	28W TL5 HE
Inrush current at mains	-
Max. lamp no. on MCB B type 10A – Mains	-
Max. lamp no. on MCB B type 10A – EM ballast without Compensation Capacitor.	-
Max. lamp no. on MCB B type 10A – EM ballast with Compensation Capacitor.	-
Max. lamp no. on MCB B type 16A – Mains	-
Max. lamp no. on MCB B type 16A – EM ballast without Compensation Capacitor.	-
Max. lamp no. on MCB B type 16A – EM ballast with Compensation Capacitor.	-
Ballast Compatibility	HF

## Temperature

T-Case maximum (nom.)	65 °C
-----------------------	-------

## Controls and Dimming

Dimmable	Yes – Check ballast compatibility
----------	-----------------------------------

## Mechanical and Housing

Lamp Finish	Frosted
Bulb material	Glass
Product length	1,200 mm
Bulb shape	T5
Net Weight (Piece)	0.160 kg

## Approval and Application

Energy Efficiency Class	D
Energy-saving product	Yes
Approval marks	RoHS compliance KEMA Keur certificate
Energy consumption kWh/1,000 hours	17 kWh
EPREL Registration Number	1384136
CE mark	Yes
EU RoHS compliant	Yes
Ambient temperature range	-20°C to 45°C

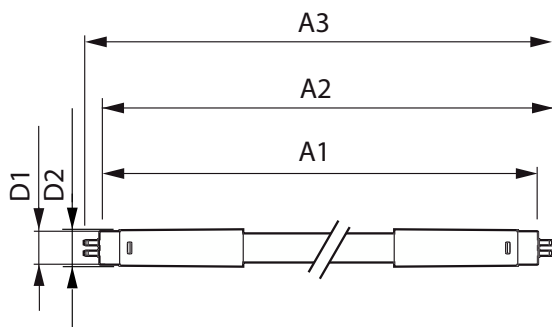
## Application Conditions

Wireless Technology	Not applicable
---------------------	----------------

## Product Data

Order product name	MAS LEDtube HF 1200mm HE 16.5W 865 T5
Full product name	MAS LEDtube HF 1200mm HE 16.5W 865 T5
Full EOC	871869674333100
Order code	929001391202
Material no. (12 NC)	929001391202
Numerator – quantity per pack	1
EAN/UPC – Product/Case	8718696743331
Numerator – packs per outer box	10
EAN/UPC – Case	8718696743348

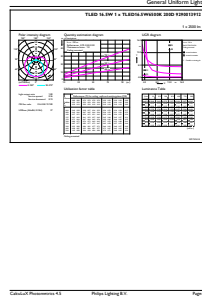
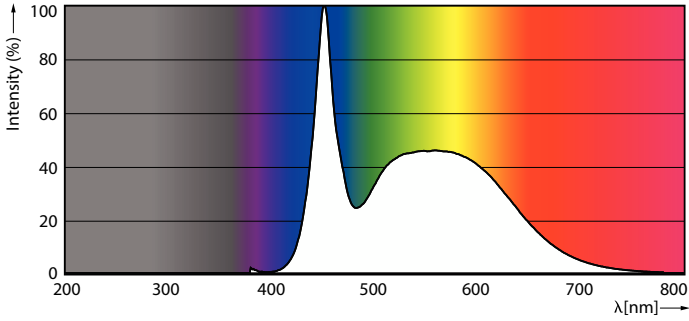
## Dimensional drawing



Product	D1	D2	A1	A2	A3
MAS LEDtube HF 1200mm HE 16.5W 865 T5	15.5 mm	18.8 mm	1,149 mm	1,156.1 mm	1,163.2 mm

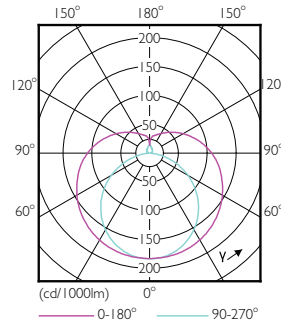
# MASTER LED tube InstantFit HF T5

## Photometric data



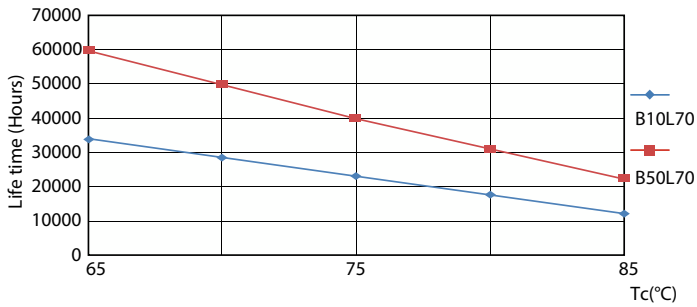
Spectral Power Distribution Colour - MAS LEDtube HF 1200mm HE 16.5W 865 T5

General uniform lighting - MAS LEDtube HF 1200mm HE 16.5W 865 T5

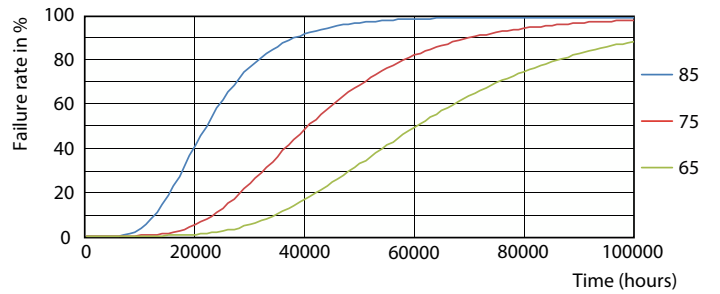


Light Distribution Diagram - MAS LEDtube HF 1200mm HE 16.5W 865 T5

## Lifetime



LifetimeVsTc



FailureRate

# MASTER LED tube InstantFit HF T5

## Lifetime



Lumen Maintenance Diagram - MAS LEDtube HF 1200mm HE 16.5W 865 T5

Life Expectancy Diagram



Lumen Maintenance Diagram - MAS LEDtube HF 1200mm HE 16.5W 865 T5

