



MASTER LEDtube InstantFit HF T5



Master LEDtube HF 1500mm HE 20W 830 T5

MASTER, LEDtube, T5, HF, 1500 mm, 20 W, 35W TL5 HE, 3000 K, 2800 lm, CRI 80, 60000 h

The Philips MASTER LEDtube integrates an LED light source into a traditional fluorescent form factor. Its unique design creates a perfectly uniform visual appearance, which cannot be distinguished from traditional fluorescents. These T5 lighting tubes are the right choice for absolute performance and are designed to stand up to everyday conditions. Unparalleled savings, thanks to low energy consumption and an exceptionally long lifetime, make these T5 LED tubes the choice for every demanding applications.

Product data

General Information		Colour consistency	
Cap base	G5	Colour consistency	<6
Nominal lifetime	60,000 h	Colour rendering index (CRI)	80
Switching Cycle	50,000	LLMF at end of nominal lifetime (nom.)	70 %
Lighting Technology	LEDtube	Photobiological safety according to EN 62471	RG0
Flux measurement reference	Sphere	Operating and Electrical	
Light Technical		Line Frequency	30K to 100K Hz
Colour Code	830 [CCT of 3000K]	Input frequency	30 K to 100 K Hz
Beam angle (nom.)	200 degree(s)	Power Consumption	20 W
Luminous Flux	2,800 lm	Lamp current (max.)	350 mA
Colour designation	White (WH)	Lamp current (min.)	150 mA
Correlated Colour Temperature (Nom)	3000 K	Starting time (nom.)	0.5 s
Luminous efficacy (rated) (nom.)	140.00 lm/W	Warm-up time to 60% light	0.5 s
		Power Factor (Fraction)	0.92

MASTER LEDtube InstantFit HF T5

Voltage (nom.)	80-130 V
LED alternative to fluorescent lamp power	35W TL5 HE
Inrush current at mains	-
Max. lamp no. on MCB B type 10A – Mains	-
Max. lamp no. on MCB B type 10A – EM ballast without Compensation Capacitor.	-
Max. lamp no. on MCB B type 10A – EM ballast with Compensation Capacitor.	-
Max. lamp no. on MCB B type 16A – Mains	-
Max. lamp no. on MCB B type 16A – EM ballast without Compensation Capacitor.	-
Max. lamp no. on MCB B type 16A – EM ballast with Compensation Capacitor.	-
Ballast Compatibility	HF

Temperature

T-Case maximum (nom.)	65 °C
-----------------------	-------

Controls and Dimming

Dimmable	Yes – Check ballast compatibility
----------	-----------------------------------

Mechanical and Housing

Lamp Finish	Frosted
Bulb material	Glass
Product length	1,500 mm
Bulb shape	T5
Net Weight (Piece)	0.196 kg

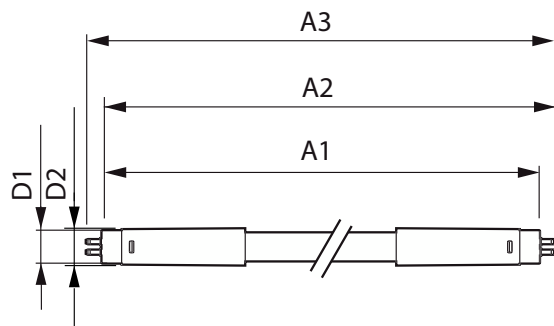
Approval and Application

Energy Efficiency Class	E
Energy-saving product	Yes
Approval marks	RoHS compliance KEMA Keur certificate
Energy consumption kWh/1,000 hours	20 kWh
EPREL Registration Number	1384137
CE mark	Yes
EU RoHS compliant	Yes
Ambient temperature range	-20°C to 45°C

Product Data

Order product name	MAS LEDtube HF 1500mm HE 20W 830 T5
Full product name	Master LEDtube HF 1500mm HE 20W 830 T5
Full EOC	871869674335500
Order code	74335500
Material no. (12 NC)	929001391302
Numerator – quantity per pack	1
EAN/UPC – Product/Case	8718696743355
Numerator – packs per outer box	10
EAN/UPC – Case	8718696743362

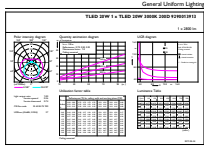
Dimensional drawing



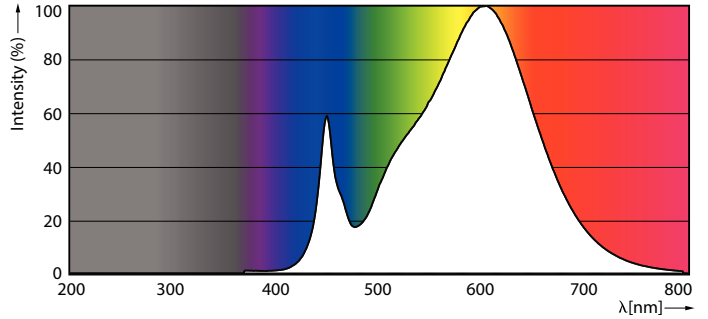
Product	D1	D2	A1	A2	A3
MAS LEDtube HF 1500mm HE 20W 830 T5	15.5 mm	18.8 mm	1,449 mm	1,456.1 mm	1,463.2 mm

MASTER LEDtube InstantFit HF T5

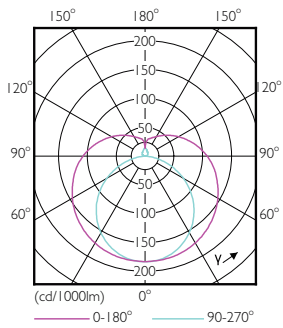
Photometric data



General uniform lighting - MAS LEDtube HF 1500mm HE 20W 830 T5

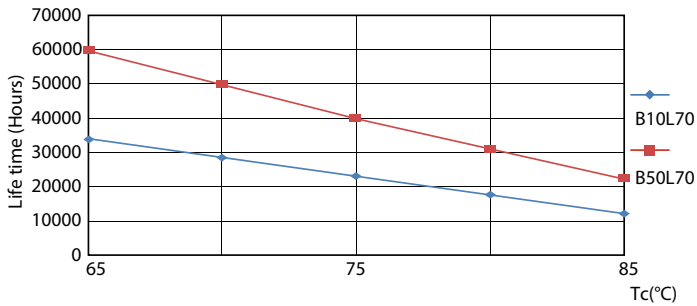


Spectral Power Distribution Colour - MAS LEDtube HF 1500mm HE 20W 830 T5

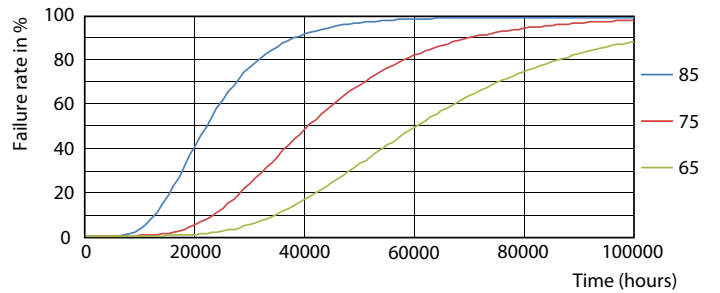


Light Distribution Diagram - MAS LEDtube HF 1500mm HE 20W 830 T5

Lifetime



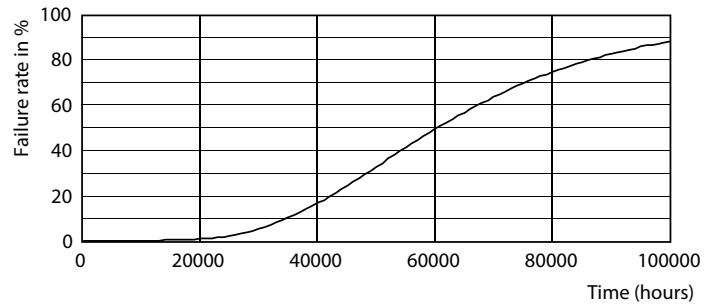
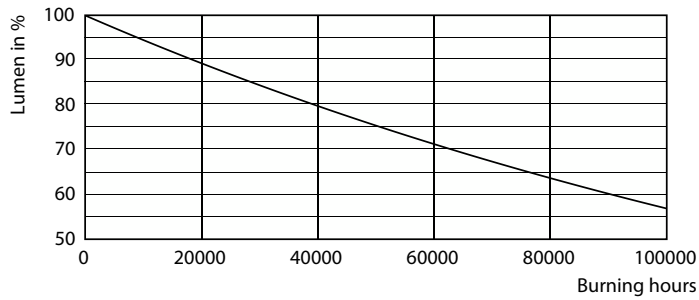
LifetimeVsTc



FailureRate

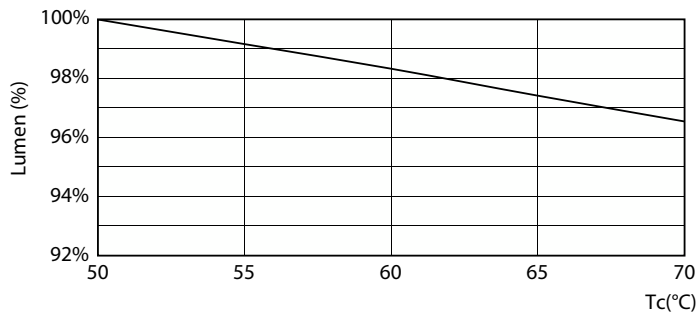
MASTER LEDtube InstantFit HF T5

Lifetime



Lumen Maintenance Diagram - MAS LEDtube HF 1500mm HE 20W 830 T5

Life Expectancy Diagram



Lumen Maintenance Diagram - MAS LEDtube HF 1500mm HE 20W 830 T5

