



# MASTER LEDtube InstantFit HF



## MASTER LEDtube HF 600mm HO 8W830 T8

MASTER, LEDtube, T8, HF, 600 mm, 8 W, 18W TL-D, 3000 K,  
1000 lm, CRI 80, 75000 h

The Philips MASTER LEDtube integrates a LED light source into a traditional fluorescent form factor. Its unique design creates a perfectly uniform visual appearance which cannot be distinguished from traditional fluorescent. This product is the ideal solution for up lighting in general lighting applications.

### Warnings and Safety

- NOTES: The overall energy efficiency and light distribution of any installation that uses these lamps are determined by the design of the installation.

### Product data

General Information		Luminous efficacy (rated) (nom.)	
Cap base	G13 ROT		125 lm/W
Nominal lifetime	75,000 h	Colour consistency	<6
Switching Cycle	50,000	Colour rendering index (CRI)	80
Lighting Technology	LEDtube	LLMF at end of nominal lifetime (nom.)	70 %
Flux measurement reference	Sphere	Photobiological safety according to EN 62471	RG0
Light Technical		Operating and Electrical	
Colour Code	830 [CCT of 3000K]	Line Frequency	20000-120000 Hz
Beam angle (nom.)	160 degree(s)	Input frequency	20000-120000 Hz
Luminous Flux	1,000 lm	Power Consumption	8 W
Colour designation	White (WH)	Lamp current (max.)	500 mA
Correlated Colour Temperature (Nom)	3000 K	Lamp current (min.)	150 mA
		Starting time (nom.)	0.5 s

# MASTER LEDtube InstantFit HF

Warm-up time to 60% light	0.5 s
Power Factor (Fraction)	0.9
Voltage (nom.)	20-50 V
LED alternative to fluorescent lamp power	18W TL-D
Inrush current at mains	-
Max. lamp no. on MCB B type 10A – Mains	-
Max. lamp no. on MCB B type 10A – EM ballast without Compensation Capacitor.	-
Max. lamp no. on MCB B type 10A – EM ballast with Compensation Capacitor.	-
Max. lamp no. on MCB B type 16A – Mains	-
Max. lamp no. on MCB B type 16A – EM ballast without Compensation Capacitor.	-
Max. lamp no. on MCB B type 16A – EM ballast with Compensation Capacitor.	-
Ballast Compatibility	HF

## Temperature

T-Case maximum (nom.)	55 °C
-----------------------	-------

## Controls and Dimming

Dimmable	No
----------	----

## Mechanical and Housing

Lamp Finish	Frosted
Bulb material	Plastic
Product length	600 mm
Bulb shape	T8

Net Weight (Piece)	0.100 kg
--------------------	----------

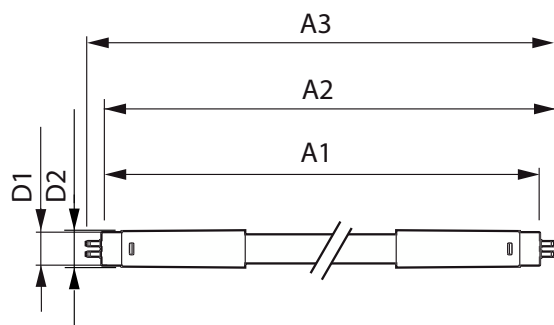
## Approval and Application

Energy Efficiency Class	E
Energy-saving product	Yes
Approval marks	RoHS compliance CE marking KEMA Keur certificate ENEC certificate
Energy consumption kWh/1,000 hours	8 kWh
EPREL Registration Number	1597256
CE mark	Yes
EU RoHS compliant	Yes
Ambient temperature range	-20°C to 45°C

## Product Data

Order product name	MAS LEDtube HF 600mm HO 8W830 T8
Full product name	MASTER LEDtube HF 600mm HO 8W830 T8
Full EOC	871951446640100
Order code	46640100
Material no. (12 NC)	929001393132
Numerator – quantity per pack	1
EAN/UPC – Product/Case	8719514466401
Numerator – packs per outer box	20
EAN/UPC – Case	8719514466418

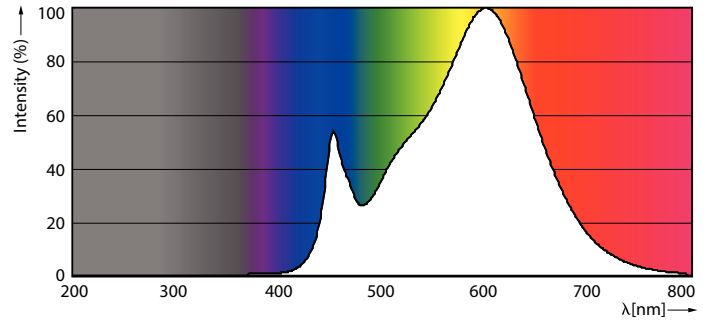
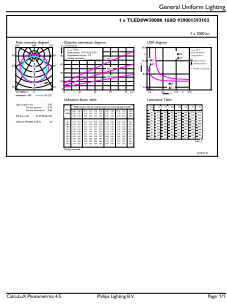
## Dimensional drawing



Product	D1	D2	A1	A2	A3
MAS LEDtube HF 600mm HO 8W830 T8	25.8 mm	28 mm	588.6 mm	595.7 mm	602.8 mm

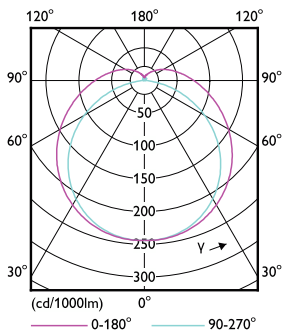
# MASTER LEDtube InstantFit HF

## Photometric data



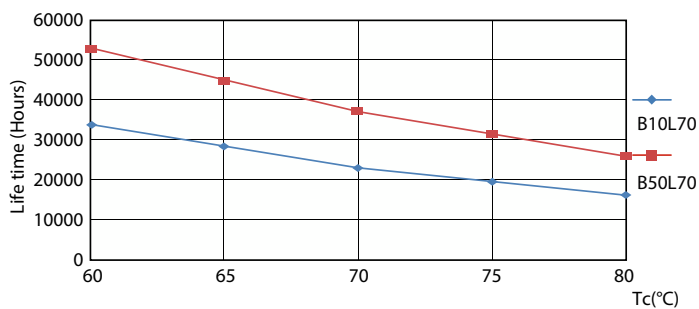
General uniform lighting - MAS LEDtube HF 600mm HO 8W830 T8

Spectral Power Distribution Colour - MAS LEDtube HF 600mm HO 8W830 T8

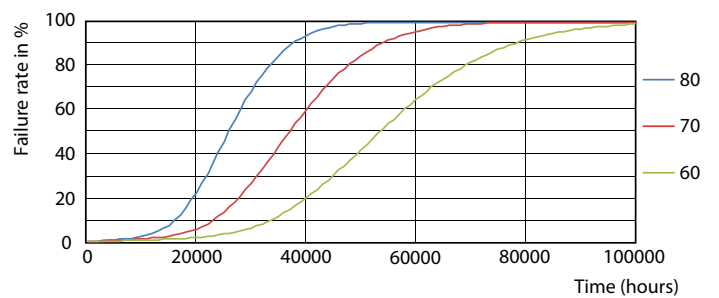


Light Distribution Diagram - MAS LEDtube HF 600mm HO 8W830 T8

## Lifetime



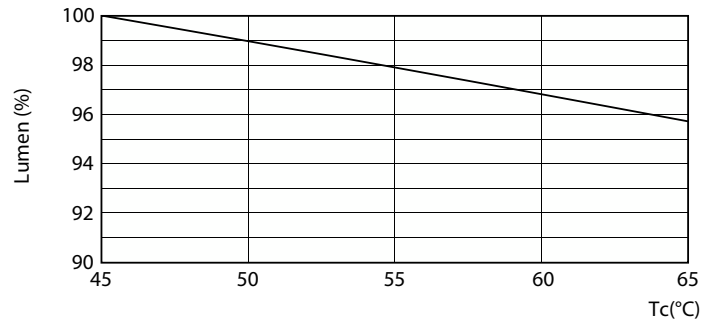
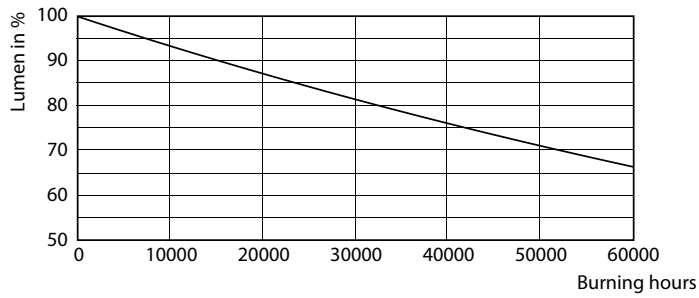
LifetimeVsTc



FailureRate

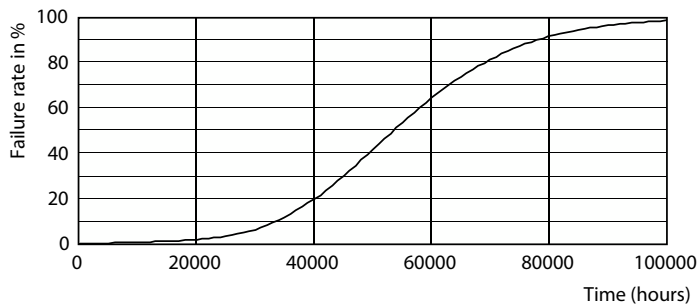
# MASTER LEDtube InstantFit HF

## Lifetime



Lumen Maintenance Diagram - MAS LEDtube HF 600mm HO 8W830 T8

Lumen Maintenance Diagram - MAS LEDtube HF 600mm HO 8W830 T8



Life Expectancy Diagram

