



MASTER LEDtube InstantFit HF



MAS LEDtube HF 600mm HO 8W865 T8

MASTER, LEDtube, T8, HF, 600 mm, 8 W, 18W TL-D, 6500 K,
1050 lm, CRI 80, 75000 h

The Philips MASTER LEDtube integrates a LED light source into a traditional fluorescent form factor. Its unique design creates a perfectly uniform visual appearance which cannot be distinguished from traditional fluorescent. This product is the ideal solution for up lighting in general lighting applications.

Warnings and Safety

- NOTES: The overall energy efficiency and light distribution of any installation that uses these lamps are determined by the design of the installation.

Product data

General Information		Operating and Electrical	
Cap base	G13 Rotatable end-cap	Correlated Colour Temperature (Nom)	6500 K
Nominal lifetime	75,000 h	Luminous efficacy (rated) (nom.)	131 lm/W
Switching Cycle	50,000	Colour consistency	<6
Lighting Technology	LEDtube	Colour rendering index (CRI)	80
Flux measurement reference	Sphere	LLMF at end of nominal lifetime (nom.)	70 %
Warranty period	5 years	Photobiological safety according to EN 62471	RG0
Light Technical		Line Frequency	20000-120000 Hz
Colour Code	865 [CCT of 6500K]	Input frequency	20000-120000 Hz
Beam angle (nom.)	160 degree(s)	Power Consumption	8 W
Luminous Flux	1,050 lm	Lamp current (max.)	500 mA
Colour designation	Cool Daylight	Lamp current (min.)	150 mA

MASTER LEDtube InstantFit HF

Starting time (nom.)	0.5 s
Warm-up time to 60% light	0.5 s
Power Factor (Fraction)	0.9
Voltage (nom.)	20-50 V
LED alternative to fluorescent lamp power	18W TL-D
Inrush current at mains	-
Max. lamp no. on MCB B type 10A – Mains	-
Max. lamp no. on MCB B type 10A – EM ballast without Compensation Capacitor.	-
Max. lamp no. on MCB B type 10A – EM ballast with Compensation Capacitor.	-
Max. lamp no. on MCB B type 16A – Mains	-
Max. lamp no. on MCB B type 16A – EM ballast without Compensation Capacitor.	-
Max. lamp no. on MCB B type 16A – EM ballast with Compensation Capacitor.	-
Ballast Compatibility	HF

Temperature

T-Case maximum (nom.)	55 °C
-----------------------	-------

Controls and Dimming

Dimmable	No
----------	----

Mechanical and Housing

Lamp Finish	Frosted
Bulb material	Plastic
Product length	600 mm
Bulb shape	T8
Net Weight (Piece)	0.100 kg

Approval and Application

Energy Efficiency Class	E
Energy-saving product	Yes
Approval marks	RoHS compliance CE marking KEMA Keur certificate ENEC certificate
Energy consumption kWh/1,000 hours	8 kWh
EPREL Registration Number	1597258
CE mark	Yes
EU RoHS compliant	Yes
Ambient temperature range	-20°C to 45°C

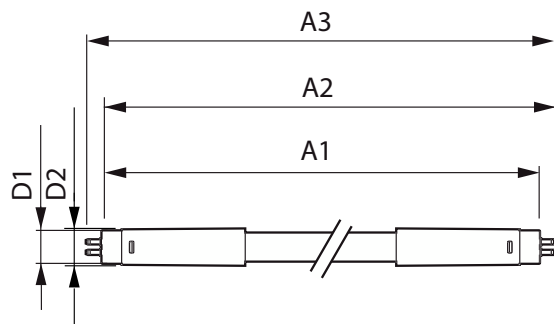
Application Conditions

Wireless Technology	Not applicable
---------------------	----------------

Product Data

Order product name	MAS LEDtube HF 600mm HO 8W865 T8
Full product name	MAS LEDtube HF 600mm HO 8W865 T8
Full EOC	871951446644900
Order code	929001393332
Material no. (12 NC)	929001393332
Numerator – quantity per pack	1
EAN/UPC – Product/Case	8719514466449
Numerator – packs per outer box	20
EAN/UPC – Case	8719514466456

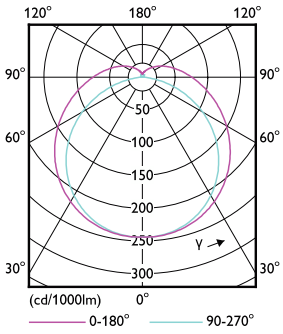
Dimensional drawing



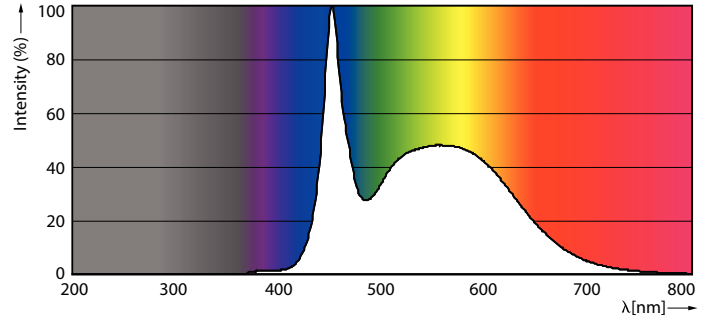
Product	D1	D2	A1	A2	A3
MAS LEDtube HF 600mm HO 8W865 T8	25.8 mm	28 mm	588.6 mm	595.7 mm	602.8 mm

MASTER LEDtube InstantFit HF

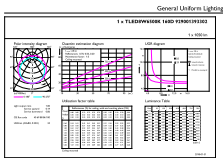
Photometric data



Light Distribution Diagram - MAS LEDtube HF 600mm HO 8W865 T8



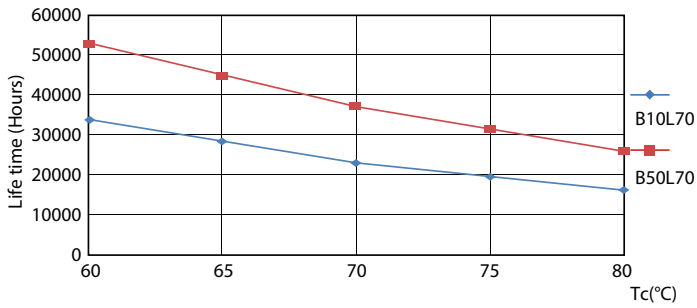
Spectral Power Distribution Colour - MAS LEDtube HF 600mm HO 8W865 T8



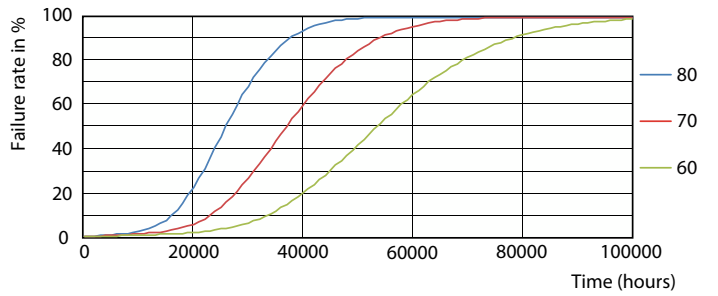
Technical Parameters Table Page Lighting HV Page 1/1

General uniform lighting - MAS LEDtube HF 600mm HO 8W865 T8

Lifetime



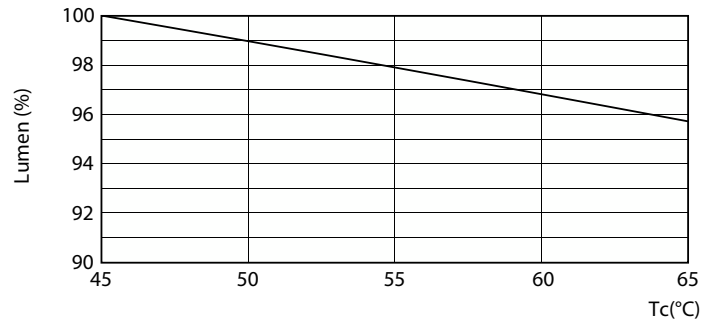
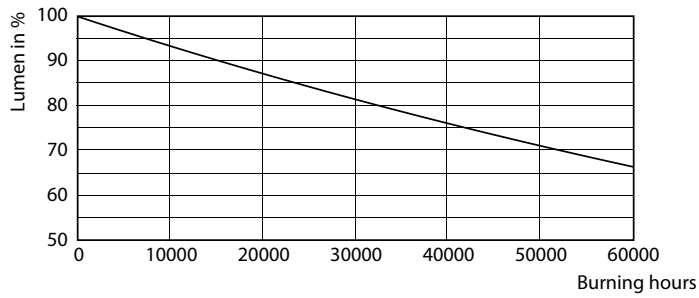
LifetimeVsTc



FailureRate

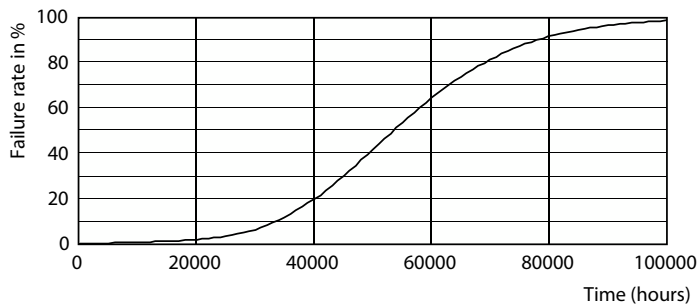
MASTER LEDtube InstantFit HF

Lifetime



Lumen Maintenance Diagram - MAS LEDtube HF 600mm HO 8W865 T8

Lumen Maintenance Diagram - MAS LEDtube HF 600mm HO 8W865 T8



Life Expectancy Diagram

