



# InstantFit (UL Type-A) T5

11T5HE/34-835/IF14/G/DIM 10/1

CorePro, LEDtube, T5, 35-7/16 inch, 11 W, 3500 K, 1400 lm, 50000 hour(s)

The InstantFit TLED lamps provide hassle-free installation with simple lamp-for-lamp replacements. They deliver what we promise, with at least 40% energy savings, flicker-free performance, and the life you would expect. Other lamps claim compatibility but only InstantFit (UL Type-A) has been proven to work with over 200 ballasts and drivers, delivering even light output, with proven energy savings and a long average lifetime. End users will be delighted being under these comfortable and high quality InstantFit lamps with no visible flicker and optimized optics. Energy managers will enjoy the InstantFit lamps too as they can count the savings delivered by our lamps. To enjoy more energy savings, the InstantFit lamps can be paired with the Advance TLED drivers to create a Type C system.

## Product data

| General Information |                    | Operating and Electrical              |                 |
|---------------------|--------------------|---------------------------------------|-----------------|
| Cap-Base            | G5                 | Correlated Color Temperature (Nom)    | 3500 K          |
| Nominal lifetime    | 50,000 hour(s)     | Luminous Efficacy (rated) (Nom)       | 127.00 lm/W     |
| Switching Cycle     | 50,000             | Color Consistency                     | <6              |
| Lighting Technology | LEDtube            | Color rendering index (CRI)           | 82              |
|                     |                    | LLMF At End Of Nominal Lifetime (Nom) | 70 %            |
| Light Technical     |                    |                                       |                 |
| Color Code          | 835 [CCT of 3500K] | Line Frequency                        | 40000-110000 Hz |
| Beam Angle (Nom)    | 200 degree(s)      | Input Frequency                       | 40000-110000 Hz |
| Luminous Flux       | 1,400 lm           | Power Consumption                     | 11 W            |
| Color Designation   | White (WH)         | Lamp Current (Max)                    | 400 mA          |

# InstantFit (UL Type-A) T5

|                           |           |
|---------------------------|-----------|
| Lamp Current (Min)        | 60 mA     |
| Wattage Equivalent        | 21 W      |
| Starting Time (Nom)       | 0.5 s     |
| Warm-up time to 60% light | 0.5 s     |
| Power Factor (Fraction)   | 0.9       |
| Voltage (Nom)             | 50-80 V   |
| UL Type                   | UL Type A |

## Temperature

|                      |        |
|----------------------|--------|
| T-Case Maximum (Nom) | 158 °F |
|----------------------|--------|

## Controls and Dimming

|          |     |
|----------|-----|
| Dimmable | Yes |
|----------|-----|

## Mechanical and Housing

|                    |              |
|--------------------|--------------|
| Bulb Finish        | Frosted      |
| Bulb Material      | Glass        |
| Product Length     | 35-7/16 inch |
| Bulb Shape         | T5           |
| Net Weight (Piece) | 0.243 lb     |

## Approval and Application

|                           |                                |
|---------------------------|--------------------------------|
| Energy Saving Product     | Yes                            |
| Approval Marks            | UL certificate RoHS compliance |
| EU RoHS compliant         | Yes                            |
| Ambient temperature range | -4 °F to 113 °F                |

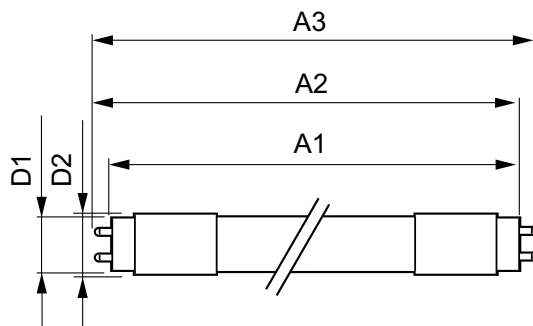
## Application Conditions

|                                     |                |
|-------------------------------------|----------------|
| can it be used in closed luminaires | Yes            |
| Wireless Technology                 | Not applicable |

## Product Data

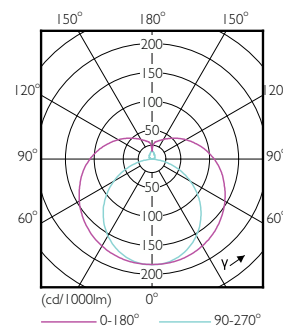
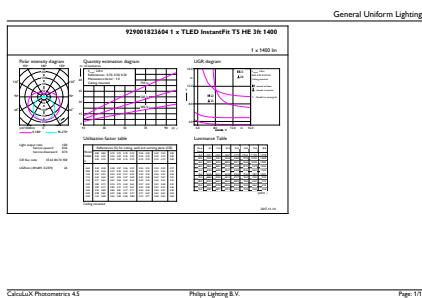
|                                 |                               |
|---------------------------------|-------------------------------|
| Order product name              | 11T5HE/34-835/IF14/G/DIM 10/1 |
| Full product name               | 11T5HE/34-835/IF14/G/DIM 10/1 |
| Order code                      | 476465                        |
| Material Nr. (12NC)             | 929001823604                  |
| Numerator - Quantity Per Pack   | 1                             |
| EAN/UPC - Product/Case          | 046677476465                  |
| Numerator - Packs per outer box | 10                            |
| EAN/UPC - Case                  | 50046677476460                |

## Dimensional drawing



| Product                           | D1       | D2       | A1          | A2            | A3            |
|-----------------------------------|----------|----------|-------------|---------------|---------------|
| 11T5HE/34-835/<br>IF14/G/DIM 10/1 | 5/8 inch | 3/4 inch | 33-3/8 inch | 33-11/16 inch | 33-15/16 inch |

## Photometric data

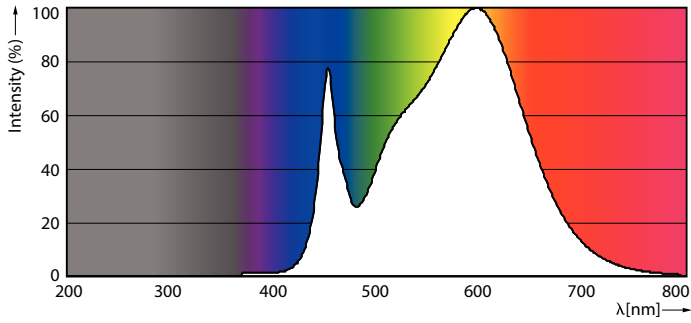


General uniform lighting - 11T5HE/34-835/IF14/G/DIM 10/1

Light Distribution Diagram - 11T5HE/34-835/IF14/G/DIM 10/1

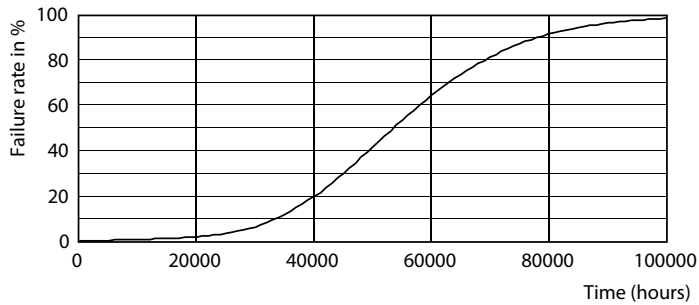
# InstantFit (UL Type-A) T5

## Photometric data

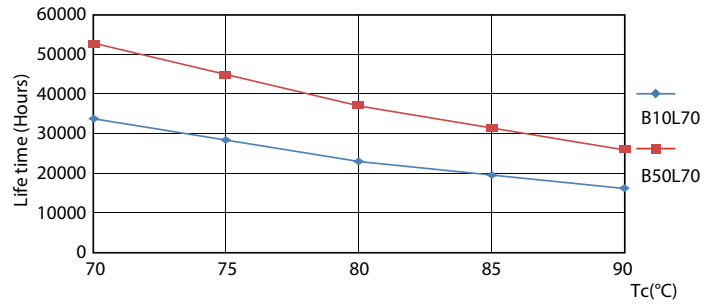


Spectral Power Distribution Colour - 11T5HE/34-835/IF14/G/DIM 10/1

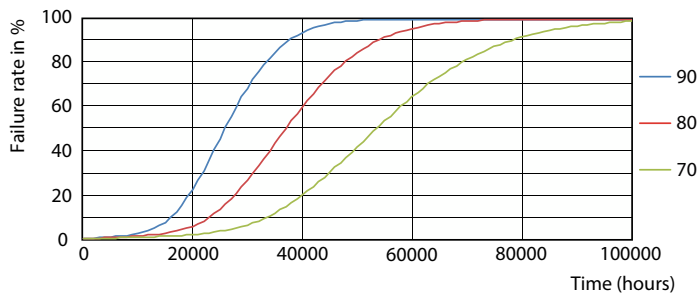
## Lifetime



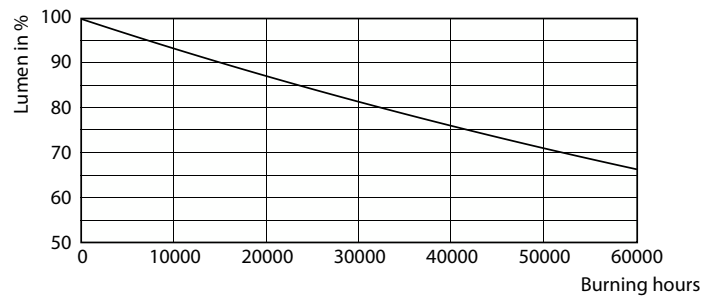
LEDtube 8-14W G5 830-850 200D DIM IF10-21



LEDtube 8-14W G5 830-850 200D DIM IF10-21



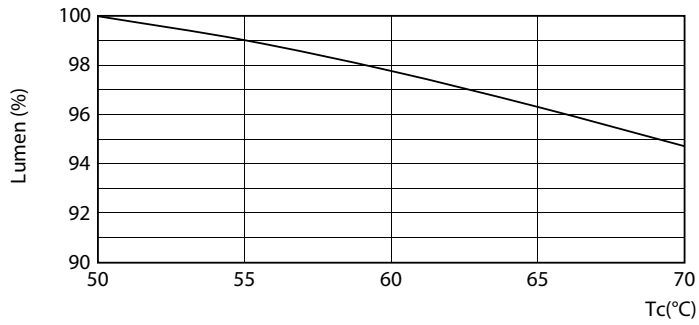
LEDtube 8-14W G5 830-850 200D DIM IF10-21



Lumen Maintenance Diagram - 11T5HE/34-835/IF14/G/DIM 10/1

## InstantFit (UL Type-A) T5

### Lifetime



Lumen Maintenance Diagram - 11T5HE/34-835/IF14/G/DIM 10/1

