

# InstantFit (UL Type-A) T5

14T5HE/46-850/IF21/G/DIM 10/1

The InstantFit TLED lamps provide hassle-free installation with simple lamp-for-lamp replacements. They deliver what we promise, with at least 40% energy savings, flicker-free performance, and the life you would expect. Other lamps claim compatibility but only InstantFit (UL Type-A) has been proven to work with over 200 ballasts and drivers, delivering even light output, with proven energy savings and a long average lifetime. End users will be delighted being under these comfortable and high quality InstantFit lamps with no visible flicker and optimized optics. Energy managers will enjoy the InstantFit lamps too as they can count the savings delivered by our lamps. To enjoy more energy savings, the InstantFit lamps can be paired with the Advance TLED drivers to create a Type C system.

## Product data

General Information	
Cap-Base	G5
Nominal lifetime	50,000 hour(s)
Switching Cycle	50,000
Lighting Technology	LED
Light Technical	
Color Code	850 [CCT of 5000K]
Beam Angle (Nom)	200 degree(s)
Luminous Flux	2,100 lm
Color Designation	Daylight
Correlated Color Temperature (Nom)	5000 K
Luminous Efficacy (rated) (Nom)	150.00 lm/W
Color Consistency	<5
Color rendering index (CRI)	82

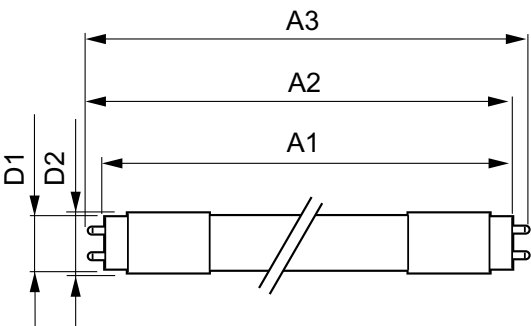
LLMF At End Of Nominal Lifetime (Nom) 70 %	
Operating and Electrical	
Line Frequency	40000-110000 Hz
Input Frequency	40000-110000 Hz
Power Consumption	14 W
Lamp Current (Max)	350 mA
Lamp Current (Min)	150 mA
Wattage Equivalent	28 W
Starting Time (Nom)	0.5 s
Warm-up time to 60% light	0.5 s
Power Factor (Fraction)	0.9
Voltage (Nom)	70-105 V
UL Type	UL Type A

InstantFit (UL Type-A) T5

Temperature	
T-Case Maximum (Nom)	70 °C
Controls and Dimming	
Dimmable	Yes
Mechanical and Housing	
Bulb Finish	Frosted
Bulb Material	Glass
Product Length	1,200 mm
Bulb Shape	T5
Net Weight (Piece)	0.146 kg
Approval and Application	
Energy Saving Product	Yes
Approval Marks	UL certificate RoHS compliance DLC compliance
Energy Consumption kWh/1000 h	- kWh

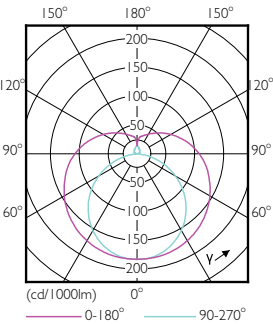
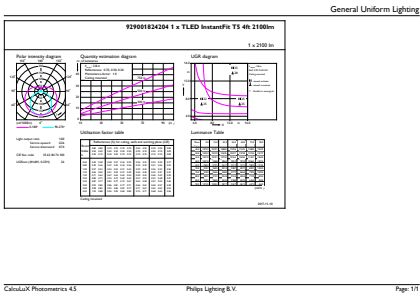
Energy Certifications	DLC Standard
EU RoHS compliant	Yes
Ambient temperature range	-20 °C to 45 °C
Application Conditions	
can it be used in closed luminaires	Yes
Product Data	
Order product name	14T5HE/46-850/IF21/G/DIM 10/1
Full product name	14T5HE/46-850/IF21/G/DIM 10/1
Order code	929001824204
Material Nr. (12NC)	929001824204
Numerator - Quantity Per Pack	1
EAN/UPC - Product/Case	046677476526
Numerator - Packs per outer box	10
EAN/UPC - Case	50046677476521

Dimensional drawing



Product	D1	D2	A1	A2	A3
14T5HE/46-850/IF21/G/DIM 10/1	15.3 mm	18.4 mm	1,147.8 mm	1,154.9 mm	1,162 mm

Photometric data

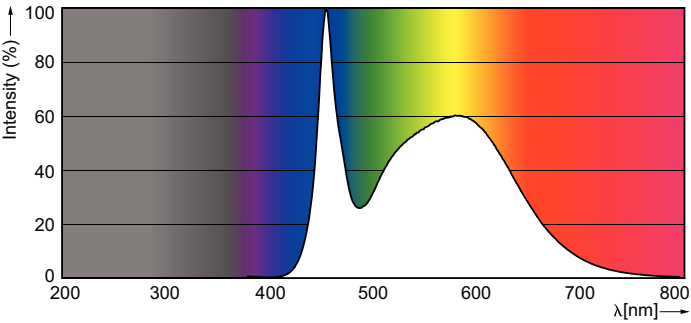


General uniform lighting - 14T5HE/46-850/IF21/G/DIM 10/1

Light Distribution Diagram - 14T5HE/46-850/IF21/G/DIM 10/1

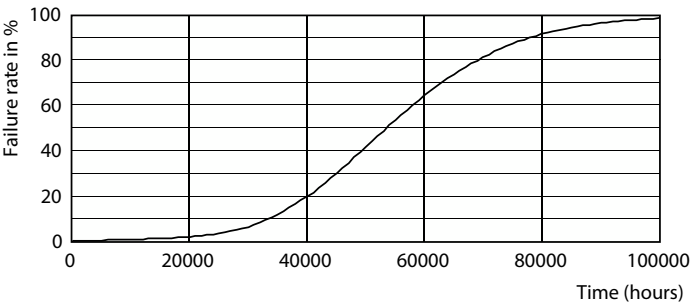
InstantFit (UL Type-A) T5

Photometric data

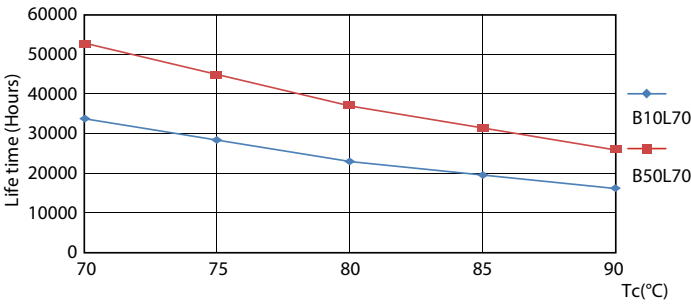


Spectral Power Distribution Colour - 14T5HE/46-850/IF21/G/DIM 10/1

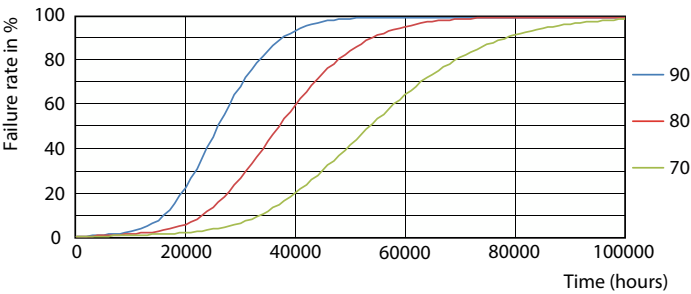
Lifetime



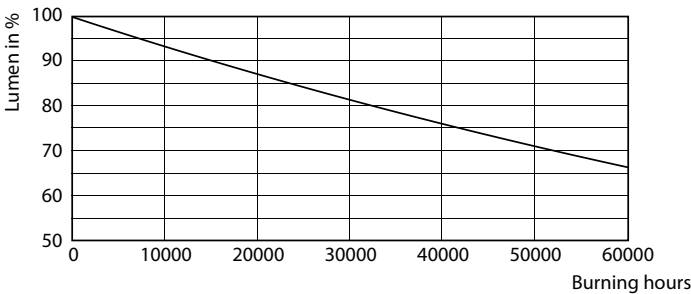
LEDtube 8-14W G5 830-850 200D DIM IF10-21



LEDtube 8-14W G5 830-850 200D DIM IF10-21



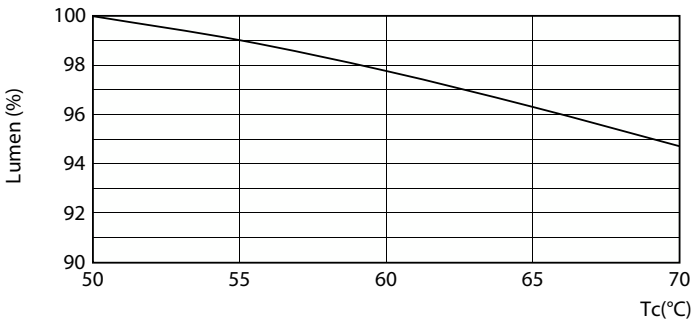
LEDtube 8-14W G5 830-850 200D DIM IF10-21



Lumen Maintenance Diagram - 14T5HE/46-850/IF21/G/DIM 10/1

InstantFit (UL Type-A) T5

Lifetime



Lumen Maintenance Diagram - 14T5HE/46-850/IF21/G/DIM 10/1

