



# PL-S

## 5PL-S/LED/13H/840/IF5/P/2P 20/1

CorePro, LED, PL-S, 5 W, 4000 K, 580 lm, 50000 hour(s)

Philips LED PL-S lamps make the transition to LED from CFL lamps as simple as replacing a lamp. The InstantFit (UL Type A) single-CCT and MainsFit (UL Type B) multi-CCT, 2-pin PL-S LED lamps are available for the selection. They offer a quickly and effectively replacement for 9W or 13W compact fluorescent PL-S lamps.

### Product data

<b>General Information</b>			
Cap-Base	GX23	Power Consumption	5 W
Nominal lifetime	50,000 hour(s)	Lamp Current (Max)	50 mA
Switching Cycle	50,000	Lamp Current (Min)	15 mA
Lighting Technology	LED	Wattage Equivalent	13 W
<b>Light Technical</b>		Starting Time (Nom)	0.5 s
Color Code	840 [CCT of 4000K]	Warm-up time to 60% light	0.5 s
Beam Angle (Nom)	120 degree(s)	Power Factor (Fraction)	0.9
Luminous Flux	580 lm	Voltage (Nom)	120-277 V
Color Designation	Cool White (CW)	UL Type	UL Type A
Correlated Color Temperature (Nom)	4000 K	<b>Temperature</b>	
Luminous Efficacy (rated) (Nom)	116.00 lm/W	T-Case Maximum (Nom)	75 °C
Color Consistency	<6	<b>Controls and Dimming</b>	
Color rendering index (CRI)	82	Dimmable	No
LLMF At End Of Nominal Lifetime (Nom)	70 %	<b>Mechanical and Housing</b>	
<b>Operating and Electrical</b>		Bulb Finish	Frosted
Line Frequency	50 to 60 Hz	Bulb Material	Plastic
Input Frequency	50 to 60 Hz	Product Length	144 mm

PL-S

Bulb Shape	PL-S
Net Weight (Piece)	0.043 kg

Approval and Application

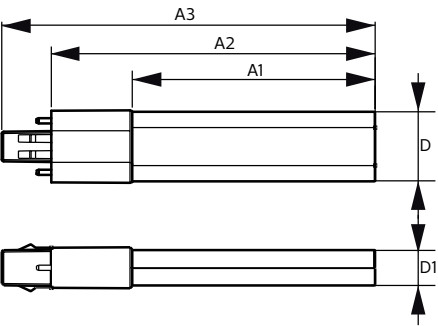
Energy Saving Product	Yes
Approval Marks	UL certificate RoHS compliance
EU RoHS compliant	Yes
Ambient temperature range	-20 °C to 45 °C

Application Conditions

can it be used in closed luminaires	Yes
-------------------------------------	-----

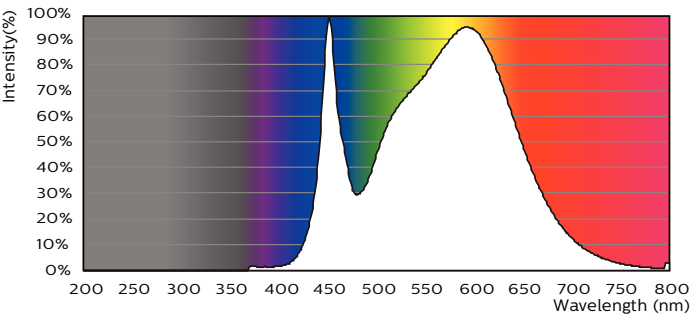
Product Data	
Order product name	5PL-S/LED/13H/840/IF5/P/2P 20/1
Full product name	5PL-S/LED/13H/840/IF5/P/2P 20/1
Order code	529586
Material Nr. (12NC)	929001863104
Numerator - Quantity Per Pack	1
EAN/UPC - Product/Case	046677529581
Numerator - Packs per outer box	20
EAN/UPC - Case	50046677529586

Dimensional drawing

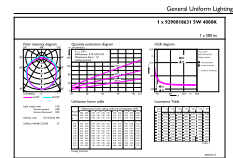


Product	D1	D2	A1	A2	A3
5PL-S/LED/13H/840/IF5/P/2P 20/1	31.1 mm	15.8 mm	108 mm	144 mm	166 mm

Photometric data

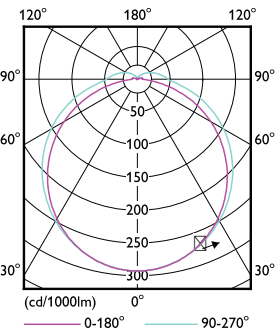


Spectral Power Distribution Colour - 5PL-S/LED/13H/840/IF5/P/2P 20/1



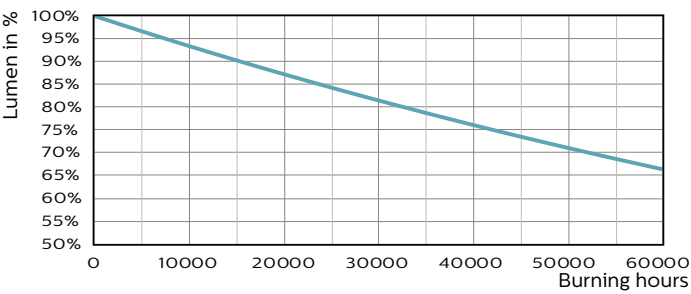
General uniform lighting - 5PL-S/LED/13H/840/IF5/P/2P 20/1

Photometric data

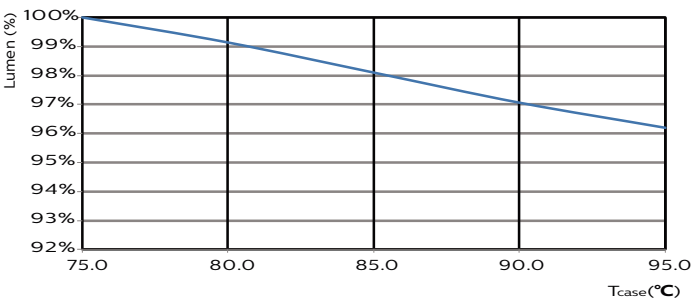


Light Distribution Diagram - 5PL-S/LED/13H/840/IF5/P/2P 20/1

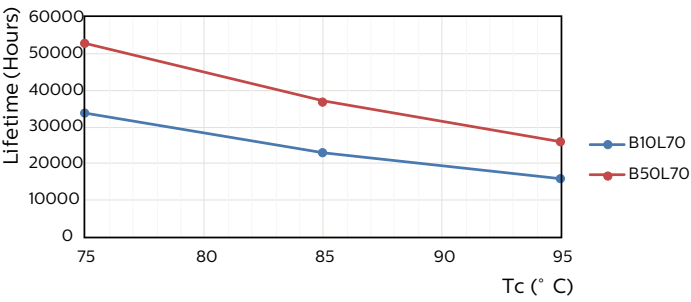
Lifetime



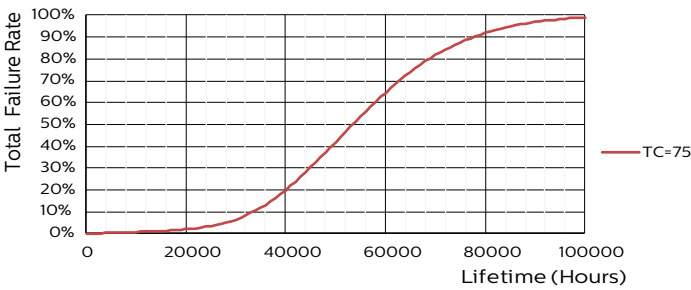
Lumen Maintenance Diagram - 5PL-S/LED/13H/840/IF5/P/2P 20/1



Lumen Maintenance Diagram - 5PL-S/LED/13H/840/IF5/P/2P 20/1

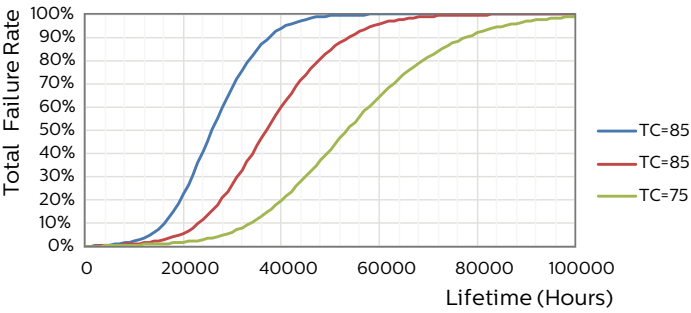


LEDtube PLS 5W GX23 827 2P 12D ND



LEDtube PLS 5W GX23 827 2P 12D ND

Lifetime



LEDtube PLS 5W GX23 827 2P 12D ND

