

CorePro LED tube Universal T8



CorePro LEDtube UN 1200mm HO 18W830 T8

CorePro, LEDtube, T8, Universal, 1200 mm, 18 W, 36W TL-D, 3000 K, 1850 lm, CRI 80, 50000 h

The new Philips CorePro LEDtube Universal T8 brings simplicity to your lighting project. You don't need to pay attention to the driver technology anymore. Thanks to a unique design, Philips CorePro LEDtube Universal T8 directly fits in luminaires operating either on Electro Magnetic ballasts or HF Electronic ballasts or mains power connection. So simple to operate and no need to carry double stock of products! Perfectly safe, reliable & easy to install Philips CorePro LEDtube Universal T8 is the ideal alternative to standard fluorescent tubes to save energy and lower investment.

Product data

General Information		Operating and Electrical	
Cap base	G13	Correlated Colour Temperature (Nom)	3000 K
Nominal lifetime	50,000 h	Luminous efficacy (rated) (nom.)	102 lm/W
Switching Cycle	50,000	Colour consistency	<6
Lighting Technology	LEDtube	Colour rendering index (CRI)	80
Flux measurement reference	Sphere	LLMF at end of nominal lifetime (nom.)	70 %
Warranty period	3 years	Photobiological safety according to EN 62471	RG0
Light Technical		Line Frequency	50 to 60 Hz
Colour Code	830 [CCT of 3000K]	Input frequency	50 to 60 Hz
Beam angle (nom.)	240 degree(s)	Power Consumption	18 W
Luminous Flux	1,850 lm	Lamp current (nom.)	100 mA
Colour designation	White (WH)	Starting time (nom.)	0.5 s

CorePro LED tube Universal T8

Warm-up time to 60% light	0.5 s
Power Factor (Fraction)	0.9
Voltage (nom.)	220-240 V
LED alternative to fluorescent lamp power	36W TL-D
Inrush current at mains	9.4
Max. lamp no. on MCB B type 10A – Mains	82
Max. lamp no. on MCB B type 10A – EM ballast without Compensation Capacitor.	104
Max. lamp no. on MCB B type 10A – EM ballast with Compensation Capacitor.	19
Max. lamp no. on MCB B type 16A – Mains	131
Max. lamp no. on MCB B type 16A – EM ballast without Compensation Capacitor.	166
Max. lamp no. on MCB B type 16A – EM ballast with Compensation Capacitor.	30
Ballast Compatibility	Universal

Temperature

T-Case maximum (nom.)	55 °C
-----------------------	-------

Controls and Dimming

Dimmable	No
----------	----

Mechanical and Housing

Lamp Finish	Frosted
Bulb material	Glass
Product length	1,200 mm
Bulb shape	T8
Net Weight (Piece)	0.215 kg

Approval and Application

Energy Efficiency Class	F
-------------------------	---

Energy-saving product	Yes
Approval marks	RoHS compliance CE marking KEMA Keur certificate
Energy consumption kWh/1,000 hours	18 kWh
EPREL Registration Number	1936621
CE mark	Yes
EU RoHS compliant	Yes
Flickering value (PstLM)	1
Stroboscopic effect	0.4
Ambient temperature range	-20 to +45 °C

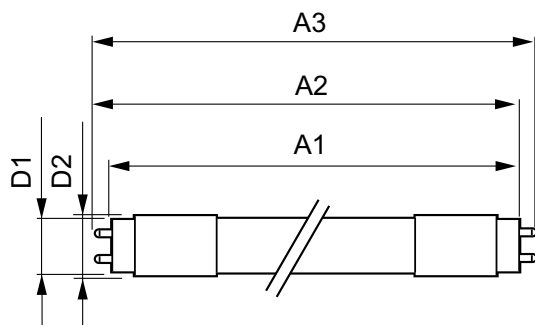
Application Conditions

Can it be used in closed luminaires	Yes
Wireless Technology	Not applicable

Product Data

Order product name	CorePro LEDtube UN 1200mm HO 18W830 T8
Full product name	CorePro LEDtube UN 1200mm HO 18W830 T8
Full EOC	871869680166600
Order code	929001869202
Material no. (12 NC)	929001869202
Numerator – quantity per pack	1
EAN/UPC – Product/Case	8718696801666
Numerator – packs per outer box	10
EAN/UPC – Case	8718696801673

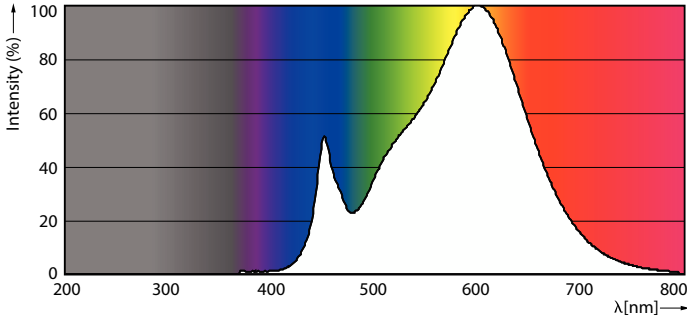
Dimensional drawing



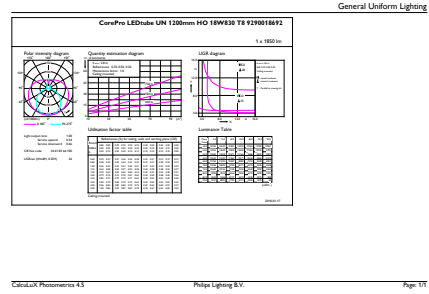
Product	D1	D2	A1	A2	A3
CorePro LEDtube UN 1200mm HO 18W830 T8	27.9 mm	28 mm	1,199.4 mm	1,205.3 mm	1,213.6 mm

CorePro LED tube Universal T8

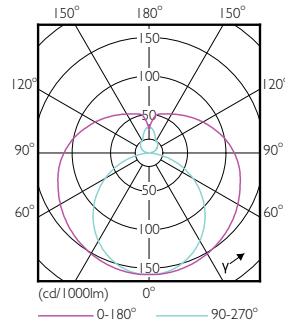
Photometric data



Spectral Power Distribution Colour - CorePro LEDtube UN 1200mm HO 18W830 T8

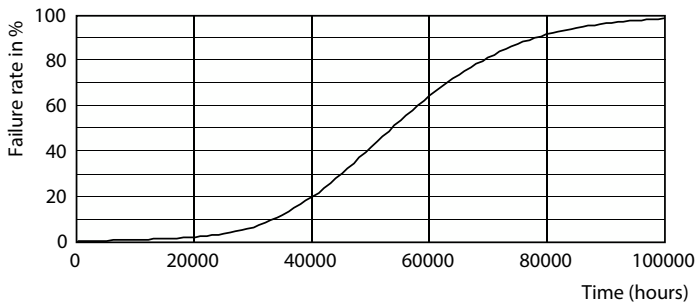


General uniform lighting - CorePro LEDtube UN 1200mm HO 18W830 T8

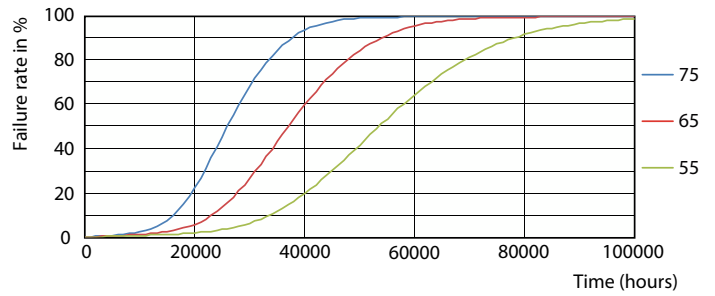


Light Distribution Diagram - CorePro LEDtube UN 1200mm HO 18W830 T8

Lifetime



Life Expectancy Diagram



FailureRate

CorePro LED tube Universal T8

Lifetime



Lumen Maintenance Diagram - CorePro LEDtube UN 1200mm HO 18W830 T8

Lumen Maintenance Diagram - CorePro LEDtube UN 1200mm HO 18W830 T8



LifetimeVsTc

