



PL-C/T

5.5PL-C/LED/13V/840/IF5/P/4P 20/1

CorePro, LED, PL-C, 5.5 W, 4000 K, 580 lm, 50000 hour(s)

Philips PLED 4-pin & 2-pin lamps are an affordable LED solution to replace compact fluorescent lamps. The product provides a natural lighting effect for use in many lighting applications, and provides instant energy savings, making them an environmentally-friendly solution. Available as replacements for 13W, 26W and 32W compact fluorescent lamps.

Product data

General Information		Power Consumption	
Cap-Base	G24q	Lamp Current (Max)	280 mA
Nominal lifetime	50,000 hour(s)	Lamp Current (Min)	130 mA
Switching Cycle	50,000	Wattage Equivalent	13 W
Lighting Technology	LED	Starting Time (Nom)	0.5 s
Light Technical		Warm-up time to 60% light	0.5 s
Color Code	840 [CCT of 4000K]	Power Factor (Fraction)	0.9
Beam Angle (Nom)	150 degree(s)	Voltage (Nom)	14-60 V
Luminous Flux	580 lm	UL Type	UL Type A
Color Designation	Cool White (CW)	Temperature	
Correlated Color Temperature (Nom)	4000 K	T-Case Maximum (Nom)	70 °C
Luminous Efficacy (rated) (Nom)	105.00 lm/W	Controls and Dimming	
Color Consistency	<6	Dimmable	Yes
Color rendering index (CRI)	82	Mechanical and Housing	
LLMF At End Of Nominal Lifetime (Nom)	70 %	Bulb Finish	Frosted
Operating and Electrical		Bulb Material	Plastic
Line Frequency	25000-100000 Hz	Product Length	101.6 mm
Input Frequency	25000-100000 Hz		

PL-C/T

Bulb Shape	PL-C
Net Weight (Piece)	0.058 kg

Approval and Application

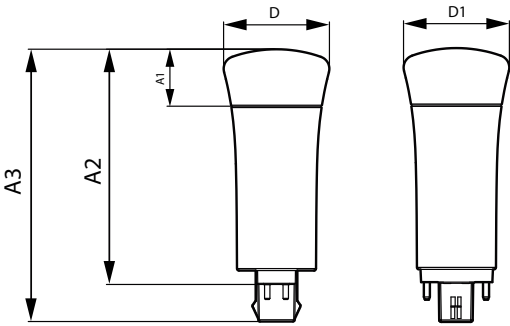
Energy Saving Product	Yes
Approval Marks	RoHS compliance UL certificate
EU RoHS compliant	Yes
Ambient temperature range	-20 °C to 45 °C

Application Conditions

can it be used in closed luminaires	Yes
-------------------------------------	-----

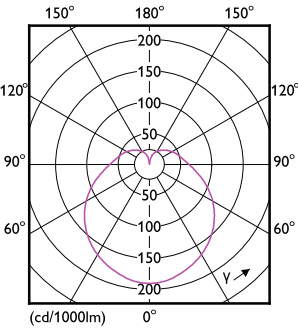
Product Data	
Order product name	5.5PL-C/LED/13V/840/IF5/P/4P 20/1
Full product name	5.5PL-C/LED/13V/840/IF5/P/4P 20/1
Order code	532465
Material Nr. (12NC)	929001886004
Numerator - Quantity Per Pack	1
EAN/UPC - Product/Case	046677532468
Numerator - Packs per outer box	20
EAN/UPC - Case	50046677532463

Dimensional drawing

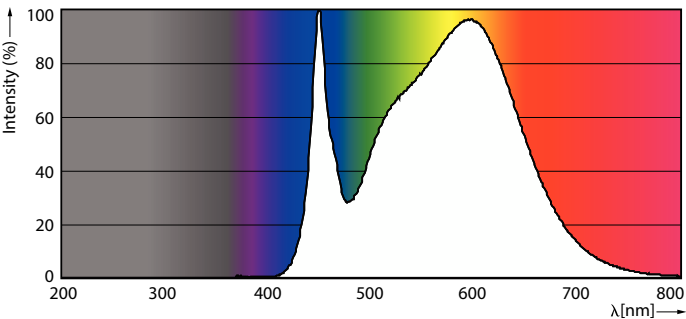


Product	D1	D	A1	A2	A3
5.5PL-C/LED/13V/840/IF5/P/4P 20/1	45.7 mm	45.7 mm	24.6 mm	101.6 mm	117.6 mm

Photometric data

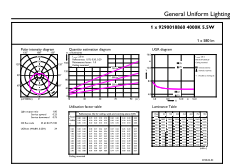


Light Distribution Diagram - 5.5PL-C/LED/13V/840/IF5/P/4P 20/1



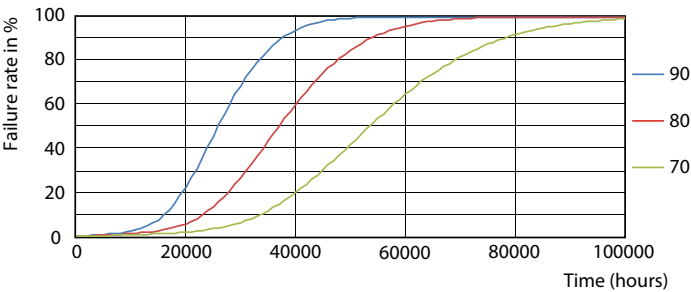
Spectral Power Distribution Colour - 5.5PL-C/LED/13V/840/IF5/P/4P 20/1

Photometric data

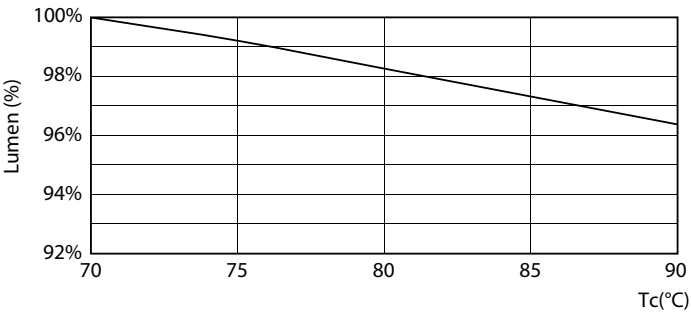


General uniform lighting - 5.5PL-C/LED/13V/840/IF5/P/4P 20/1

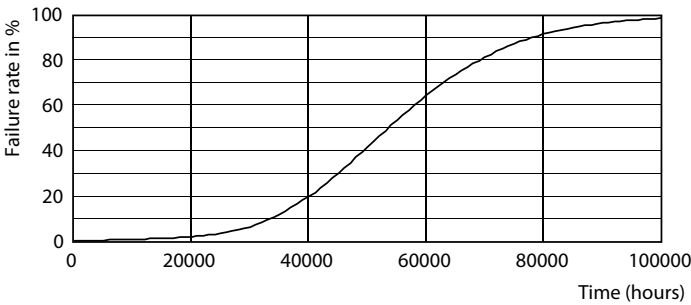
Lifetime



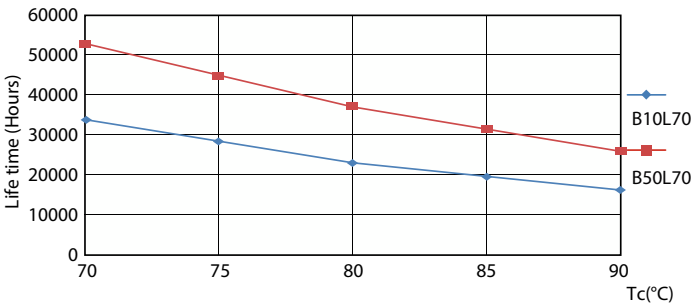
LEDtube PLC 13H 5W GX23-2 827 15D ND



Lumen Maintenance Diagram - 5.5PL-C/LED/13V/840/IF5/P/4P 20/1

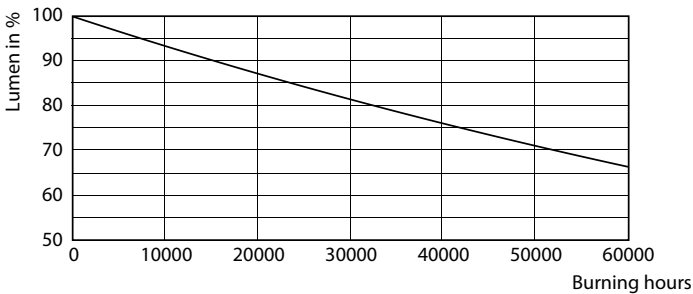


LEDtube PLC 13H 5W GX23-2 827 15D ND



LEDtube PLC 13H 5W GX23-2 827 15D ND

Lifetime



Lumen Maintenance Diagram - 5.5PL-C/LED/13V/840/IF5/P/4P 20/1

