



MASTER LED tube Mains T5



MAS LEDtube 1500mm HO 26W 865 T5

MASTER, LEDtube, T5, Mains, 1500 mm, 26 W, 49W TL5 HO, 6500 K, 3900 lm, CRI 80, 60000 h

The new Philips Master LEDtube Mains T5 brings simplicity to your lighting project. You don't need to pay attention to the driver technology anymore. Thanks to a unique design, Philips MASTER LEDtube Mains T5 installs in luminaires operating on mains power connection. So simple to operate! . Perfectly safe, reliable & easy to install, the Philips MASTER LEDtube Mains T5 is the ideal alternative to standard fluorescent tubes to maximise value over lifetime with high energy savings and lower maintenance costs.

Product data

General Information		Luminous efficacy (rated) (nom.)	
Cap base	G5		150 lm/W
Nominal lifetime	60,000 h	Colour consistency	<6
Switching Cycle	200,000	Colour rendering index (CRI)	80
Lighting Technology	LEDtube	LLMF at end of nominal lifetime (nom.)	70 %
Flux measurement reference	Sphere	Photobiological safety according to EN 62471	RG0
Warranty period	5 years		
Light Technical		Operating and Electrical	
Colour Code	865 [CCT of 6500K]	Line Frequency	50 to 60 Hz
Beam angle (nom.)	200 degree(s)	Input frequency	50 to 60 Hz
Luminous Flux	3,900 lm	Power Consumption	26 W
Colour designation	Cool Daylight	Lamp current (nom.)	125 mA
Correlated Colour Temperature (Nom)	6500 K	Starting time (nom.)	0.5 s
		Warm-up time to 60% light	0.5 s
		Power Factor (Fraction)	0.92

MASTER LED tube Mains T5

Voltage (nom.)	220-240 V
LED alternative to fluorescent lamp power	49W TL5 HO
Inrush current at mains	20
Max. lamp no. on MCB B type 10A – Mains	31
Max. lamp no. on MCB B type 10A – EM ballast without Compensation Capacitor.	-
Max. lamp no. on MCB B type 10A – EM ballast with Compensation Capacitor.	-
Max. lamp no. on MCB B type 16A – Mains	50
Max. lamp no. on MCB B type 16A – EM ballast without Compensation Capacitor.	-
Max. lamp no. on MCB B type 16A – EM ballast with Compensation Capacitor.	-
Ballast Compatibility	Mains

Temperature

T-Case maximum (nom.)	65 °C
-----------------------	-------

Controls and Dimming

Dimmable	No
----------	----

Mechanical and Housing

Lamp Finish	Frosted
Bulb material	Glass
Product length	1,500 mm
Bulb shape	T5
Net Weight (Piece)	0.285 kg

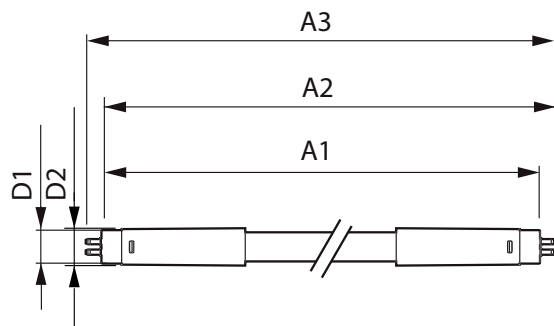
Approval and Application

Energy Efficiency Class	D
Energy-saving product	Yes
Approval marks	RoHS compliance
Energy consumption kWh/1,000 hours	26 kWh
EPREL Registration Number	1476413
CE mark	Yes
EU RoHS compliant	Yes
Flickering value (PstLM)	1
Stroboscopic effect	0.4
Ambient temperature range	-20 to +45 °C

Product Data

Order product name	MAS LEDtube 1500mm HO 26W 865 T5
Full product name	MAS LEDtube 1500mm HO 26W 865 T5
Full EOC	871869681933300
Order code	929001909002
Material no. (12 NC)	929001909002
Numerator – quantity per pack	1
EAN/UPC – Product/Case	8718696819333
Numerator – packs per outer box	10
EAN/UPC – Case	8718696819340

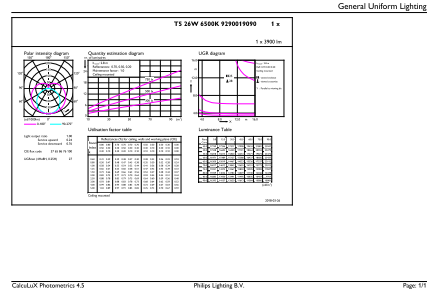
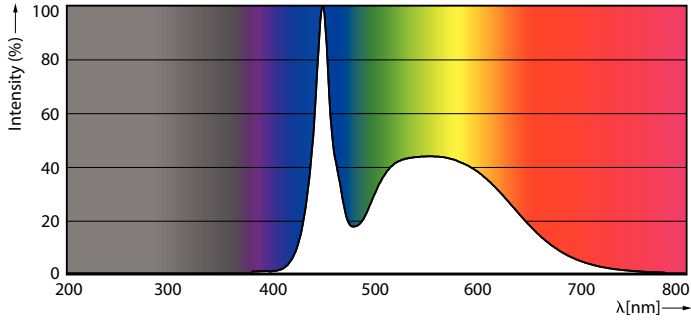
Dimensional drawing



Product	D1	D2	A1	A2	A3
MAS LEDtube 1500mm HO 26W 865 T5	15.5 mm	17.1 mm	1,449 mm	1,456 mm	1,463 mm

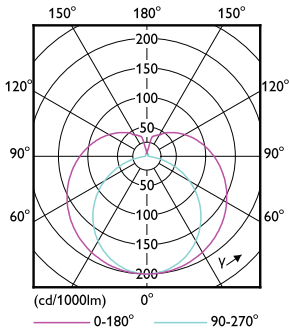
MASTER LED tube Mains T5

Photometric data



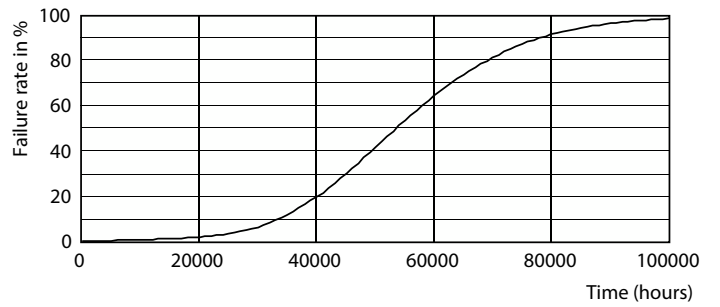
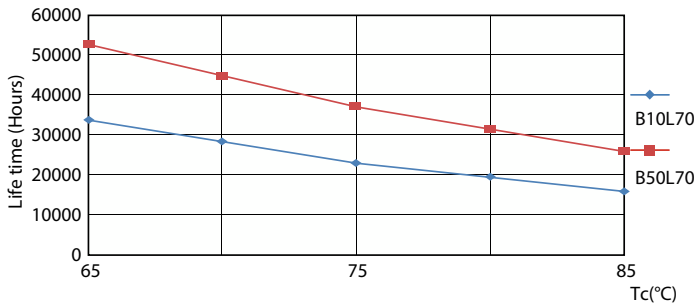
Spectral Power Distribution Colour - MAS LEDtube 1500mm HO 26W 865 T5

General uniform lighting - MAS LEDtube 1500mm HO 26W 865 T5



Light Distribution Diagram - MAS LEDtube 1500mm HO 26W 865 T5

Lifetime

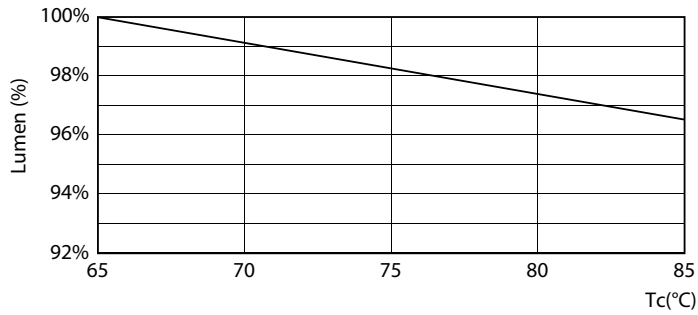


LifetimeVsTc

Life Expectancy Diagram

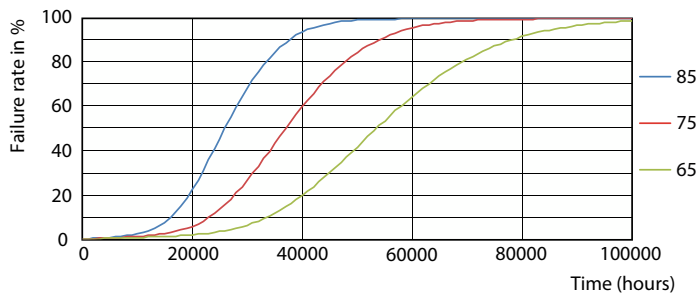
MASTER LED tube Mains T5

Lifetime



Lumen Maintenance Diagram - MAS LEDtube 1500mm HO 26W 865 T5

Lumen Maintenance Diagram - MAS LEDtube 1500mm HO 26W 865 T5



FailureRate

