



CorePro LED PLL



CorePro LED PLL HF 24W 840 4P 2G11

CorePro, LED, PL-L, HF, 528 mm, 24 W, 55W PL-L, 4000 K, 3400 lm, CRI 83, 30000 h

Philips CorePro LED PLL is the ideal uplamping solution for downlights & luminaires in a wide range of general lighting applications. It integrates a LED light source into a traditional fluorescent form factor to offer superb energy savings over a lifetime that's twice as long as fluorescent alternatives.

Product data

General Information	
Cap base	2G11
Nominal lifetime	30,000 h
Switching Cycle	50,000
Lighting Technology	LED
Flux measurement reference	Sphere
Warranty period	3 years
Light Technical	
Colour Code	840 [CCT of 4000K]
Beam angle (nom.)	160 degree(s)
Luminous Flux	3,400 lm
Colour designation	Cool White (CW)
Correlated Colour Temperature (Nom)	4000 K
Luminous efficacy (rated) (nom.)	141.00 lm/W
Colour consistency	<6
Colour rendering index (CRI)	83
LLMF at end of nominal lifetime (nom.)	70 %

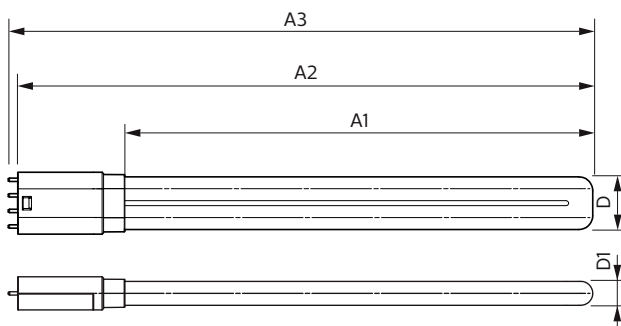
Photobiological safety according to EN 62471	RG0
Operating and Electrical	
Line Frequency	20000-70000 Hz
Input frequency	20000-70000 Hz
Power Consumption	24 W
Lamp current (max.)	600 mA
Lamp current (min.)	400 mA
Starting time (nom.)	0.5 s
Warm-up time to 60% light	0.5 s
Power Factor (Fraction)	0.9
Voltage (nom.)	53-77 V
LED alternative to fluorescent lamp power	55W PL-L
Inrush current at mains	-
Max. lamp no. on MCB B type 10A – Mains	-
Max. lamp no. on MCB B type 10A – EM ballast without Compensation Capacitor.	-
Max. lamp no. on MCB B type 10A – EM ballast with Compensation Capacitor.	-

CorePro LED PLL

Max. lamp no. on MCB B type 16A — Mains	-
Max. lamp no. on MCB B type 16A – EM ballast without Compensation Capacitor.	-
Max. lamp no. on MCB B type 16A – EM ballast with Compensation Capacitor.	-
Ballast Compatibility	HF
Temperature	
T-Case maximum (nom.)	70 °C
Controls and Dimming	
Dimmable	No
Mechanical and Housing	
Product length	528 mm
Bulb shape	PL-L
Net Weight (Piece)	0.160 kg
Approval and Application	
Energy Efficiency Class	E
Energy-saving product	Yes

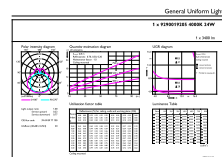
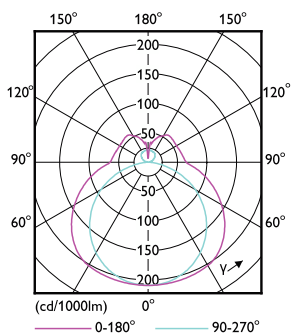
Approval marks	RoHS compliance
Energy consumption kWh/1,000 hours	24 kWh
EPREL Registration Number	387356
CE mark	Yes
EU RoHS compliant	Yes
Ambient temperature range	-20°C to 45°C
Product Data	
Order product name	CorePro LED PLL HF 24W 840 4P 2G11
Full product name	CorePro LED PLL HF 24W 840 4P 2G11
Full EOC	871869682841000
Order code	929001920502
Material no. (12 NC)	929001920502
Numerator – quantity per pack	1
EAN/UPC – Product/Case	8718696828410
Numerator – packs per outer box	10
EAN/UPC - Case	8718696828427

Dimensional drawing



Product	D1	D2	A1	A2	A3
CorePro LED PLL HF 24W 840 4P 2G11	17 mm	38 mm	453 mm	528 mm	535 mm

Photometric data

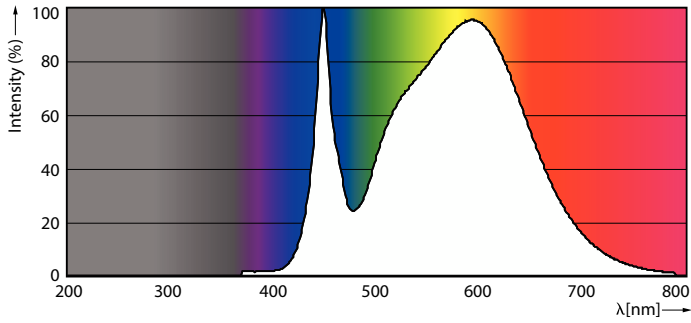


Light Distribution Diagram - CorePro LED PLL HF 24W 840 4P 2G11

General uniform lighting - CorePro LED PLL HF 24W 840 4P 2G11

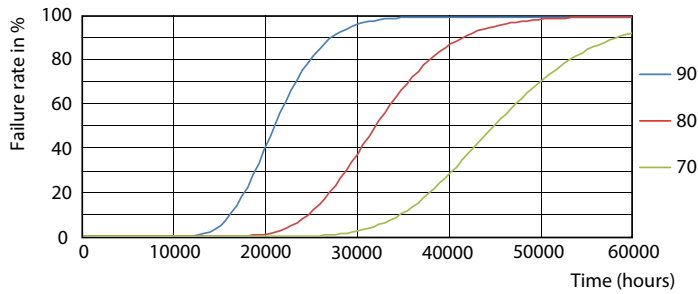
CorePro LED PLL

Photometric data

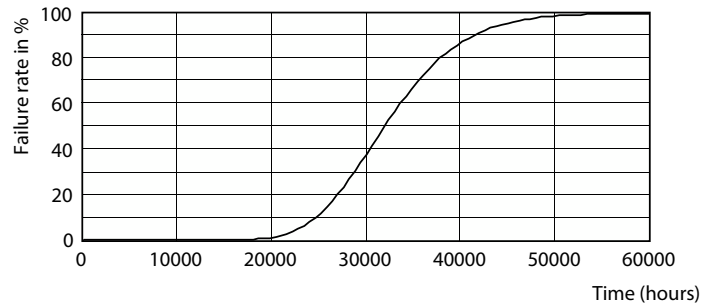


Spectral Power Distribution Colour - CorePro LED PLL HF 24W 840 4P 2G11

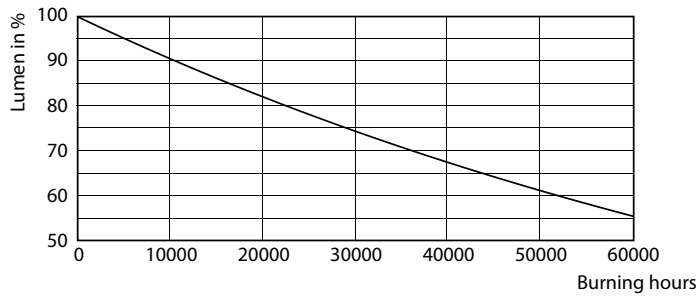
Lifetime



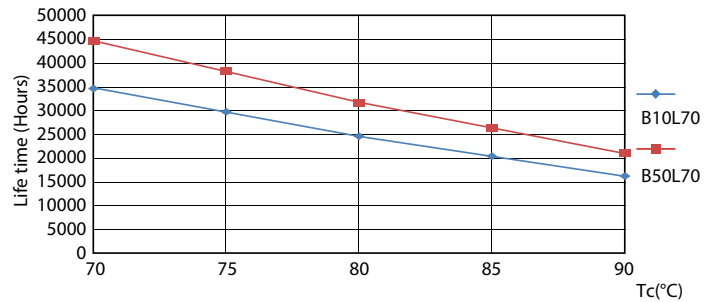
LEDtube CorePro PLL HF 24W 2G11 830 24D ND



LEDtube CorePro PLL HF 24W 2G11 830 24D ND



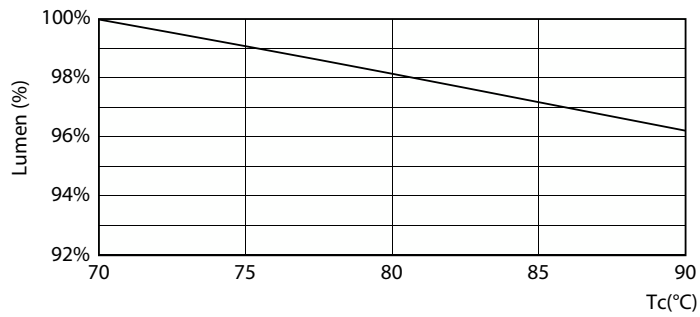
Lumen Maintenance Diagram - CorePro LED PLL HF 24W 840 4P 2G11



LEDtube CorePro PLL HF 24W 2G11 830 24D ND

CorePro LED PLL

Lifetime



Lumen Maintenance Diagram - CorePro LED PLL HF 24W 840 4P 2G11

