



MASTER LEDtube EM/ Mains



MASTER LEDtube 1200mm HO 12.5W 865 T8

MASTER, LEDtube, T8, EM/Mains, 1200 mm, 12.5 W, 36W TL-D, 6500 K, 2100 lm, CRI 80, 75000 h

The Philips MASTER LEDtube integrates a LED light source into a traditional fluorescent form factor. Its unique design creates a perfectly uniform visual appearance which cannot be distinguished from traditional fluorescent. This product is the ideal solution for up lambing in general lighting applications.

Warnings and Safety

• -

Product data

| General Information | |
|----------------------------|----------|
| Cap base | G13 ROT |
| Nominal lifetime | 75,000 h |
| Switching Cycle | 200,000 |
| Lighting Technology | LEDtube |
| Flux measurement reference | Sphere |

| Light Technical | |
|-------------------------------------|--------------------|
| Colour Code | 865 [CCT of 6500K] |
| Beam angle (nom.) | 160 degree(s) |
| Luminous Flux | 2,100 lm |
| Colour designation | Cool Daylight |
| Correlated Colour Temperature (Nom) | 6500 K |
| Luminous efficacy (rated) (nom.) | 168 lm/W |

| | |
|--|------|
| Colour consistency | <6 |
| Colour rendering index (CRI) | 80 |
| LLMF at end of nominal lifetime (nom.) | 70 % |
| Photobiological safety according to EN 62471 | RG0 |

| Operating and Electrical | |
|---------------------------|-------------|
| Line Frequency | 50 to 60 Hz |
| Input frequency | 50 to 60 Hz |
| Power Consumption | 12.5 W |
| Lamp current (max.) | 63 mA |
| Lamp current (min.) | 52 mA |
| Starting time (nom.) | 0.5 s |
| Warm-up time to 60% light | 0.5 s |
| Power Factor (Fraction) | 0.9 |

MASTER LEDtube EM/Mains

| | |
|--|-----------|
| Voltage (nom.) | 220-240 V |
| LED alternative to fluorescent lamp power | 36W TL-D |
| Inrush current at mains | 8 |
| Max. lamp no. on MCB B type 10A – Mains | 90 |
| Max. lamp no. on MCB B type 10A – EM ballast without Compensation Capacitor. | 115 |
| Max. lamp no. on MCB B type 10A – EM ballast with Compensation Capacitor. | 15 |
| Max. lamp no. on MCB B type 16A – Mains | 150 |
| Max. lamp no. on MCB B type 16A – EM ballast without Compensation Capacitor. | 190 |
| Max. lamp no. on MCB B type 16A – EM ballast with Compensation Capacitor. | 25 |
| Ballast Compatibility | EM/Mains |

Temperature

| | |
|-----------------------|-------|
| T-Case maximum (nom.) | 50 °C |
|-----------------------|-------|

Controls and Dimming

| | |
|----------|----|
| Dimmable | No |
|----------|----|

Mechanical and Housing

| | |
|--------------------|----------|
| Lamp Finish | Frosted |
| Bulb material | Plastic |
| Product length | 1,200 mm |
| Bulb shape | T8 |
| Net Weight (Piece) | 0.230 kg |

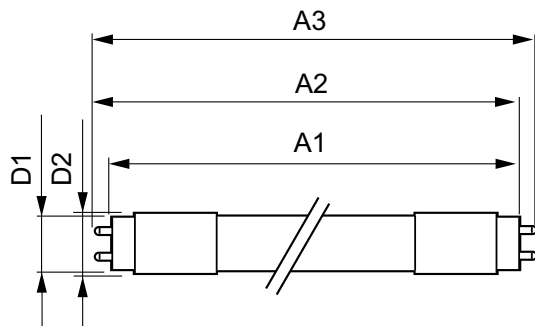
Approval and Application

| | |
|------------------------------------|--|
| Energy Efficiency Class | C |
| Energy-saving product | Yes |
| Approval marks | RoHS compliance CE marking KEMA Keur certificate ENEC certificate |
| Energy consumption kWh/1,000 hours | 13 kWh |
| EPREL Registration Number | 1206968 |
| CE mark | Yes |
| EU RoHS compliant | Yes |
| Flickering value (PstLM) | 0.5 |
| Stroboscopic effect | 0.2 |
| Ambient temperature range | -20°C to 45°C |

Product Data

| | |
|---------------------------------|--|
| Order product name | MAS LEDtube 1200mm HO 12.5W 865 T8 |
| Full product name | MASTER LEDtube 1200mm HO 12.5W 865 T8 |
| Full EOC | 871869959239400 |
| Order code | 59239400 |
| Material no. (12 NC) | 929001922802 |
| Numerator – quantity per pack | 1 |
| EAN/UPC – Product/Case | 8718699592394 |
| Numerator – packs per outer box | 10 |
| EAN/UPC – Case | 8718699592400 |

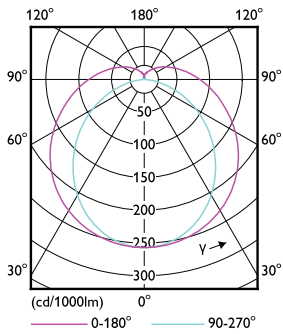
Dimensional drawing



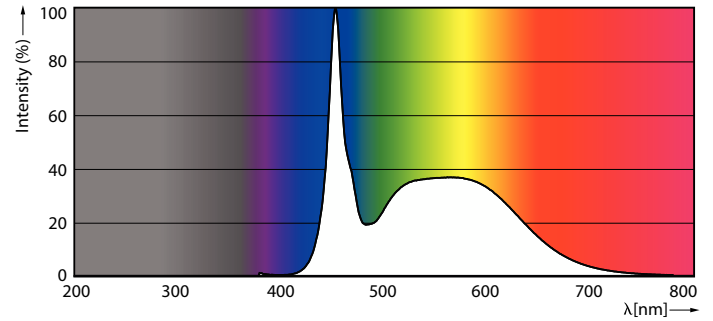
| Product | D1 | D2 | A1 | A2 | A3 |
|---------------------------------------|---------|-------|------------|------------|------------|
| MAS LEDtube 1200mm HO 12.5W 865 T8 | 25.8 mm | 28 mm | 1,198.2 mm | 1,205.3 mm | 1,212.4 mm |

MASTER LEDtube EM/Mains

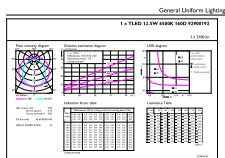
Photometric data



Light Distribution Diagram - MAS LEDtube 1200mm HO 12.5W 865 T8



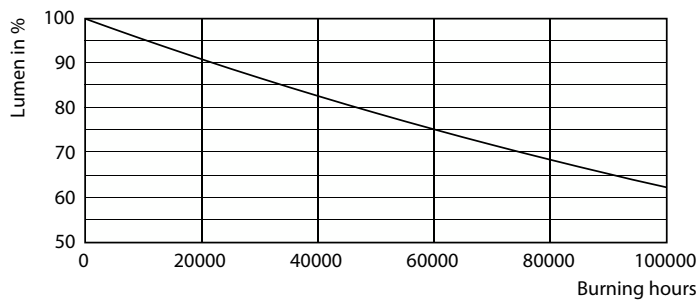
Spectral Power Distribution Colour - MAS LEDtube 1200mm HO 12.5W 865 T8



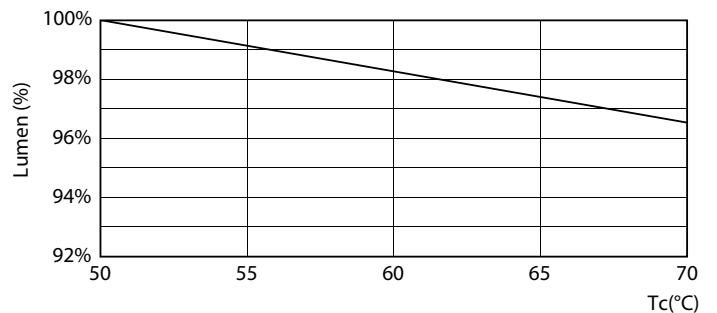
Technical Parameters (1) Page Lighting (1) Page (1)

General uniform lighting - MAS LEDtube 1200mm HO 12.5W 865 T8

Lifetime



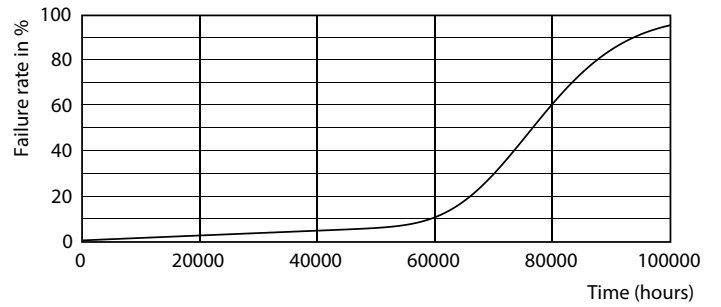
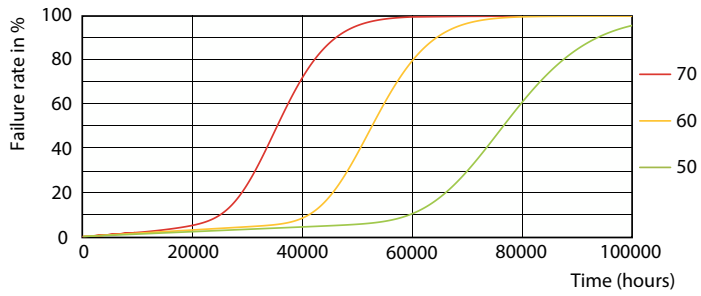
Lumen Maintenance Diagram - MAS LEDtube 1200mm HO 12.5W 865 T8



Lumen Maintenance Diagram - MAS LEDtube 1200mm HO 12.5W 865 T8

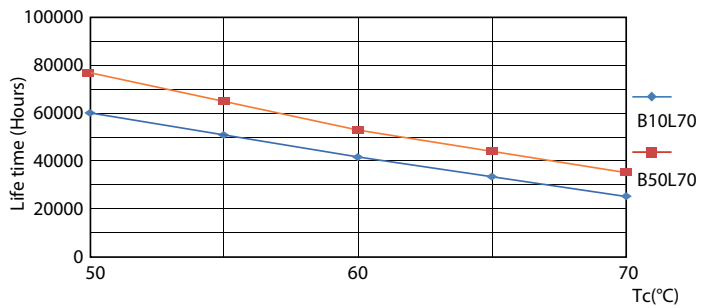
MASTER LEDtube EM/Mains

Lifetime



LEDtube-75K-5070-FailureRate-LED

Life Expectancy Diagram



LifetimeVsTc

