



CorePro MainsFit (UL Type-B) T8

15.5T8-6U/COR/24-850/MF21/G 10/1

The CorePro MainsFit (UL Type B) lamps are designed to be the perfect retrofit solution to move from traditional fluorescent lamps to energy saving LEDs. This ballast bypass lamp has everything needed built into the lamp with proven energy savings, long life (up to 50k hours), surge suppression and industry leading safety features. All lamps in the CorePro MainsFit family are double-ended to help simplify the installation. In addition, all lamps meet the Philips standards for light quality so that end users will be in a comfortable environment regardless of the CorePro MainsFit lamp type.

Product data

| General Information | |
|---------------------------------------|--------------------|
| Cap-Base | 2G13 |
| Nominal lifetime | 50,000 hour(s) |
| Switching Cycle | 50,000 |
| Lighting Technology | LED |
| Light Technical | |
| Color Code | 850 [CCT of 5000K] |
| Beam Angle (Nom) | 180 degree(s) |
| Luminous Flux | 2,100 lm |
| Color Designation | Daylight |
| Correlated Color Temperature (Nom) | 5000 K |
| Luminous Efficacy (rated) (Nom) | 135.00 lm/W |
| Color Consistency | <5 |
| Color rendering index (CRI) | 82 |
| LLMF At End Of Nominal Lifetime (Nom) | 70 % |

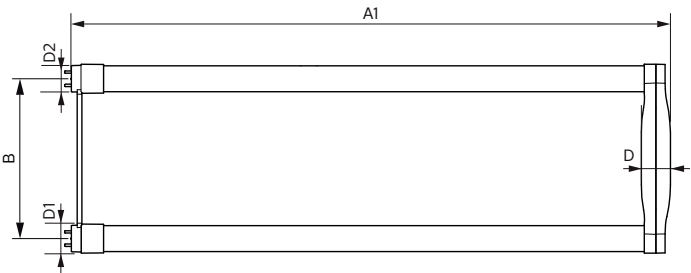
| Operating and Electrical | |
|---------------------------|-------------|
| Line Frequency | 50 to 60 Hz |
| Input Frequency | 50 to 60 Hz |
| Power Consumption | 15.5 W |
| Lamp Current (Max) | 140 mA |
| Lamp Current (Min) | 63 mA |
| Wattage Equivalent | 32 W |
| Starting Time (Nom) | 0.9 s |
| Warm-up time to 60% light | 0.9 s |
| Power Factor (Fraction) | 0.9 |
| Voltage (Nom) | 120-277 V |
| UL Type | UL Type B |
| Temperature | |
| T-Case Maximum (Nom) | 51 °C |

CorePro MainsFit (UL Type-B) T8

| | |
|-------------------------------|---|
| Controls and Dimming | |
| Dimmable | No |
| Mechanical and Housing | |
| Bulb Finish | Frosted |
| Bulb Material | Glass |
| Product Length | 600 mm |
| Bulb Shape | T8 |
| Net Weight (Piece) | 0.230 kg |
| Approval and Application | |
| Energy Saving Product | Yes |
| Approval Marks | UL certificate RoHS compliance DLC compliance |
| Energy Consumption kWh/1000 h | - kWh |
| Energy Certifications | DLC Standard |
| EU RoHS compliant | Yes |

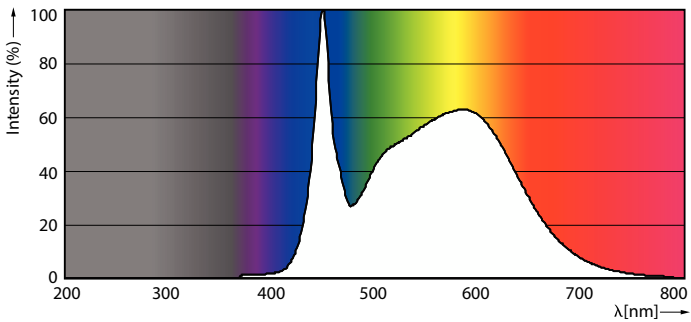
| | |
|-------------------------------------|----------------------------------|
| Ambient temperature range | -20 °C to 45 °C |
| Application Conditions | |
| can it be used in closed luminaires | Yes |
| Product Data | |
| Order product name | 15.5T8-6U/COR/24-850/MF21/G 10/1 |
| Full product name | 15.5T8-6U/COR/24-850/MF21/G 10/1 |
| Order code | 929001934904 |
| Material Nr. (12NC) | 929001934904 |
| Numerator - Quantity Per Pack | 1 |
| EAN/UPC - Product/Case | 046677535568 |
| Numerator - Packs per outer box | 10 |
| EAN/UPC - Case | 50046677535563 |

Dimensional drawing

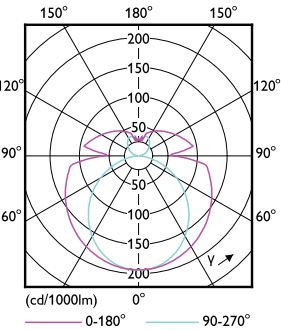


| Product | D1 | D2 | B | A1 | D |
|----------------------------------|---------|---------|--------|--------|---------|
| 15.5T8-6U/COR/24-850/MF21/G 10/1 | 25.7 mm | 28.1 mm | 152 mm | 570 mm | 27.9 mm |

Photometric data

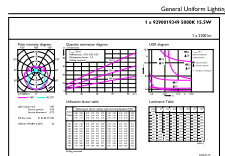


Spectral Power Distribution Colour - 15.5T8-6U/COR/24-850/MF21/G 10/1



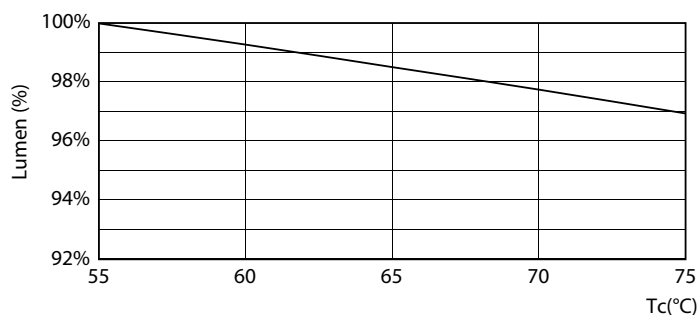
Light Distribution Diagram - 15.5T8-6U/COR/24-850/MF21/G 10/1

Photometric data



| | | |
|---------------------------|-----------------|-------|
| Cellulose Nanofibrils 4.5 | Polysulfone 0.5 | Emul. |
|---------------------------|-----------------|-------|

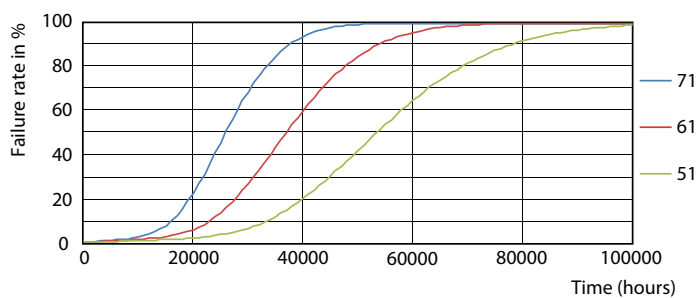
Lifetime



The graph illustrates the failure rate over time. The x-axis represents time in hours, ranging from 0 to 100,000 with major grid lines every 20,000 hours. The y-axis represents the failure rate in percent, ranging from 0 to 100 with major grid lines every 20 percent. The curve shows a long period of low failure rate (up to ~20,000 hours), followed by a rapid increase between 20,000 and 60,000 hours, and finally a gradual approach to 100% failure rate after 80,000 hours.

| Time (hours) | Failure rate (%) |
|--------------|------------------|
| 0 | 0 |
| 20,000 | ~2 |
| 40,000 | ~20 |
| 50,000 | 50 |
| 60,000 | ~65 |
| 80,000 | ~90 |
| 100,000 | ~98 |

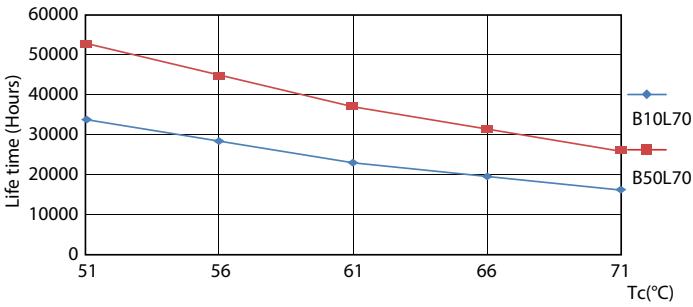
8.5W G13



15-5W 2G13

CorePro MainsFit (UL Type-B) T8

Lifetime



15-5W 2G13

