



Contractor-grade InstantFit (UL Type-A) T8

16T8/LED/48-840/IF18/G 25/1

The InstantFit LED lamps provide hassle-free installation with simple lamp-for-lamp replacements. They deliver what we promise, with at least 40% energy savings, flicker-free performance, and the life you would expect. Other lamps claim compatibility but only InstantFit (UL Type A) has been proven to work with over 350 ballasts and drivers, delivering even light output, with proven energy savings and a long average lifetime. End users will be delighted being under these comfortable and high quality InstantFit lamps with no visible flicker and optimized optics. Energy managers will enjoy the InstantFit lamps too as they can count the savings delivered by our lamps. To enjoy more energy savings, the InstantFit lamps can be paired with the Advance TLED drivers to create a Type C system.

Product data

General Information	
Cap-Base	G13 [Medium Bi-Pin Fluorescent]
Nominal lifetime	36,000 hour(s)
Switching Cycle	50,000
Lighting Technology	LED

Light Technical	
Color Code	840 [CCT of 4000K]
Beam Angle (Nom)	240 degree(s)
Luminous Flux	1,800 lm
Color Designation	Cool White (CW)
Correlated Color Temperature (Nom)	4000 K

Luminous Efficacy (rated) (Nom)	112.00 lm/W
Color Consistency	<6
Color rendering index (CRI)	80
LLMF At End Of Nominal Lifetime (Nom)	70 %

Operating and Electrical	
Line Frequency	20K to 120K Hz
Input Frequency	20K to 120K Hz
Power Consumption	16 W
Lamp Current (Max)	330 mA
Lamp Current (Min)	110 mA
Wattage Equivalent	32 W

Contractor-grade InstantFit (UL Type-A) T8

Starting Time (Nom)	0.5 s
Warm-up time to 60% light	0.5 s
Power Factor (Fraction)	0.9
Voltage (Nom)	120-277, 347 V
UL Type	UL Type A

Temperature

T-Case Maximum (Nom)	35 °C
----------------------	-------

Controls and Dimming

Dimmable	No
----------	----

Mechanical and Housing

Bulb Finish	Frosted
Bulb Material	Glass
Product Length	1,200 mm
Bulb Shape	T8
Net Weight (Piece)	0.215 kg

Approval and Application

Energy Saving Product	Yes
-----------------------	-----

Approval Marks	RoHS compliance UL certificate
Energy Consumption kWh/1000 h	- kWh
EU RoHS compliant	Yes
Ambient temperature range	-20 °C to 45 °C

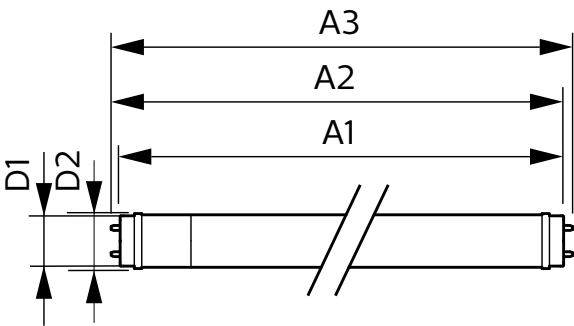
Application Conditions

can it be used in closed luminaires	Yes
-------------------------------------	-----

Product Data

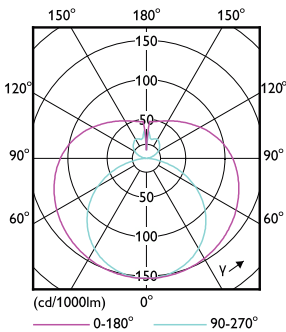
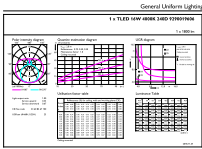
Order product name	16T8/LED/48-840/IF18/G 25/1
Full product name	16T8/LED/48-840/IF18/G 25/1
Order code	929001960604
Material Nr. (12NC)	929001960604
Numerator - Quantity Per Pack	1
EAN/UPC - Product/Case	046677542085
Numerator - Packs per outer box	25
EAN/UPC - Case	50046677542080

Dimensional drawing



Product	D1	D2	A1	A2	A3
16T8/LED/48-840/IF18/G 25/1	25.7 mm	28 mm	1,198 mm	1,205 mm	1,212 mm

Photometric data

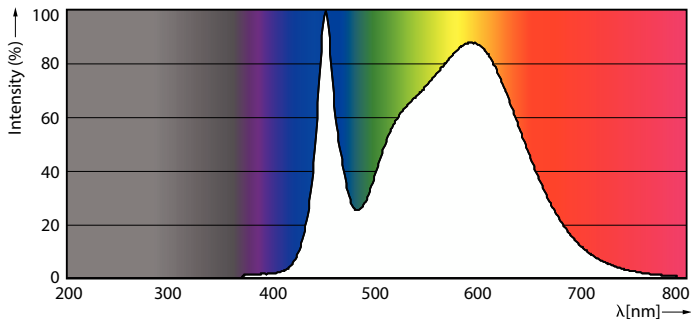


Accent Lighting Spots - 16T8/LED/48-840/IF18/G 25/1

Light Distribution Diagram - 16T8/LED/48-840/IF18/G 25/1

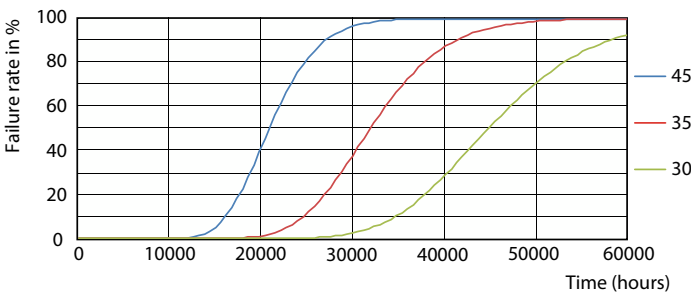
Contractor-grade InstantFit (UL Type-A) T8

Photometric data

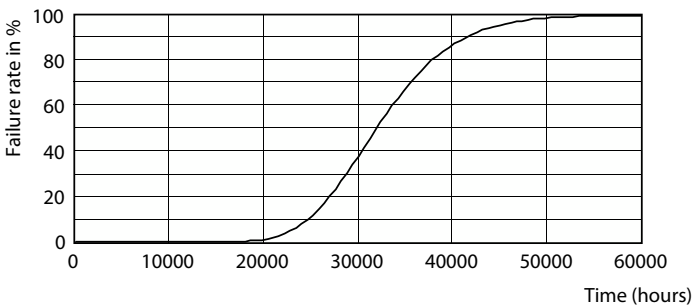


Spectral Power Distribution Colour - 16T8/LED/48-840/IF18/G 25/1

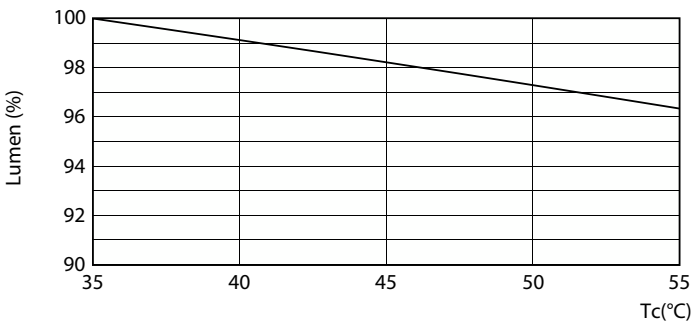
Lifetime



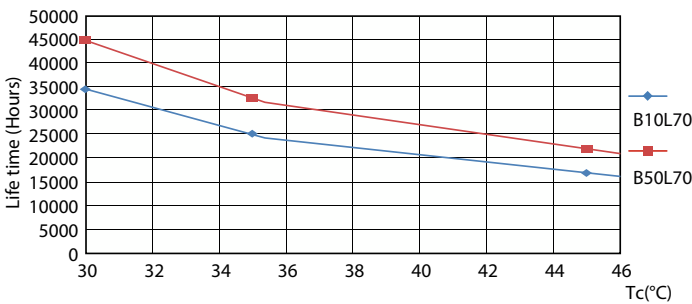
LEDtubes 1200mm T8 120-277 16W 1800lm 4000K



LEDtubes 1200mm T8 120-277 16W 1800lm 4000K



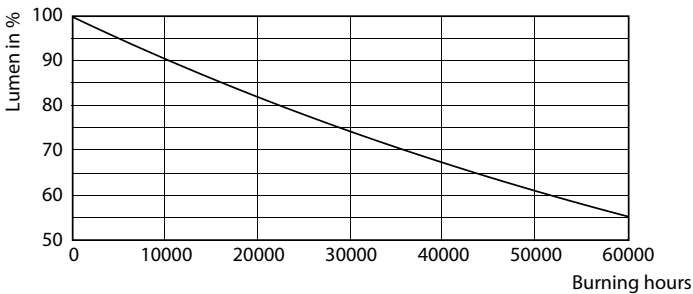
Lumen Maintenance Diagram - 16T8/LED/48-840/IF18/G 25/1



LEDtubes 1200mm T8 120-277 16W 1800lm 4000K

Contractor-grade InstantFit (UL Type-A) T8

Lifetime



Lumen Maintenance Diagram - 16T8/LED/48-840/IF18/G 25/1

