



MASTER LED tube EM/Mains T8 with Recycled Plastic



MAS LEDtube 1050mm 16W 840 T8

MASTER, LEDtube, T8, EM/Mains, 1100 mm, 220–240 V, 16 W, 38W TL-D, 4000 K, 2500 lm, CRI 80, 75000 h

Our new sustainability hero Philips MASTER LEDtube T8 EM/mains — a pioneering LED tube designed for performance, durability and environmental impact. As the first-ever LED tube to feature 40% post-consumer recycled plastic, it sets a new standard for sustainable lighting without compromising quality. With a long lifetime of 75,000 hours and high luminous efficacy up to 185 lm/W, the MASTER LEDtube T8 ensures outstanding energy efficiency. These T8 LED tubes are the right choice for absolute performance and are designed to stand up to everyday conditions. Unparalleled savings thanks to low-energy consumption and an exceptionally long lifetime ensure that this tube masters every demanding application.

Product data

General Information	
Cap base	G13 Rotatable end-cap
Nominal lifetime	75,000 h
Switching Cycle	200,000
Lighting Technology	LEDtube
Flux measurement reference	Sphere
Warranty period	5 years

Light Technical	
Colour Code	840 [CCT of 4000K]
Beam angle (nom.)	160 degree(s)
Luminous Flux	2,500 lm
Colour designation	Cool White (CW)
Correlated Colour Temperature (Nom)	4000 K
Luminous efficacy (rated) (nom.)	156 lm/W
Colour consistency	<6
Colour rendering index (CRI)	80

MASTER LED tube EM/Mains T8 with Recycled Plastic

LLMF at end of nominal lifetime (nom.)	70 %
Photobiological safety according to EN 62471	RGO

Operating and Electrical

Line Frequency	50 to 60 Hz
Input frequency	50 to 60 Hz
Power Consumption	16 W
Lamp current (max.)	83 mA
Lamp current (min.)	68 mA
Starting time (nom.)	0.5 s
Warm-up time to 60% light	0.5 s
Power Factor (Fraction)	0.9
Voltage (nom.)	220–240 V
LED alternative to fluorescent lamp power	38W TL-D
Inrush current at mains	8.4
Max. lamp no. on MCB B type 10A — Mains	90
Max. lamp no. on MCB B type 10A – EM ballast without Compensation Capacitor.	90
Max. lamp no. on MCB B type 10A – EM ballast with Compensation Capacitor.	15
Max. lamp no. on MCB B type 16A — Mains	140
Max. lamp no. on MCB B type 16A – EM ballast without Compensation Capacitor.	150
Max. lamp no. on MCB B type 16A – EM ballast with Compensation Capacitor.	25
Ballast Compatibility	EM/Mains

Temperature

T-Case maximum (nom.)	55 °C
-----------------------	-------

Controls and Dimming

Dimmable	No
----------	----

Mechanical and Housing

Lamp Finish	Frosted
Bulb material	Plastic
Product length	1,100 mm

Bulb shape	T8
Net Weight (Piece)	0.220 kg

Approval and Application

Energy Efficiency Class	D
Energy-saving product	Yes
Approval marks	RoHS compliance CE marking KEMA Keur certificate ENEC certificate
Energy consumption kWh/1,000 hours	16 kWh
EPREL Registration Number	2571889
CE mark	Yes
EU RoHS compliant	Yes
Flickering value (PstLM)	0.1
Stroboscopic effect	0.1
Ambient temperature range	-20 to +45 °C
Post-consumer recycled plastic material ratio	40 %

Application Conditions

Can it be used in closed luminaires	Yes
Wireless Technology	Not applicable

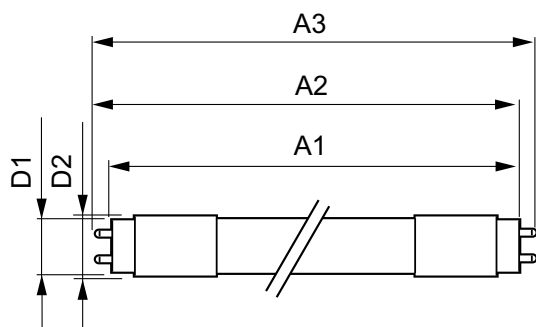
Sustainability Data

Product non-virgin material ratio	27 %
-----------------------------------	------

Product Data

Order product name	MAS LEDtube 1050mm 16W 840 T8
Full product name	MAS LEDtube 1050mm 16W 840 T8
Full EOC	871869961602100
Order code	929001961102
Material no. (12 NC)	929001961102
Numerator – quantity per pack	1
EAN/UPC – Product/Case	8718699616021
Numerator – packs per outer box	10
EAN/UPC - Case	8718699616038

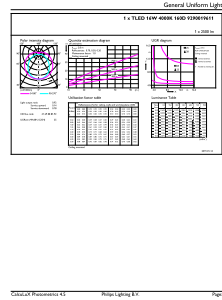
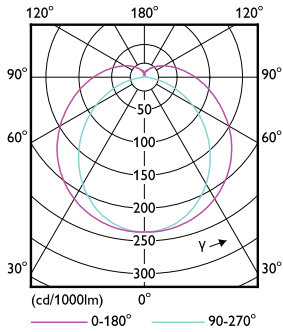
Dimensional drawing



Product	D1	D2	A1	A2	A3
MAS LEDtube 1050mm 16W 840 T8	25.8 mm	28 mm	1,045.8 mm	1,052.9 mm	1,060 mm

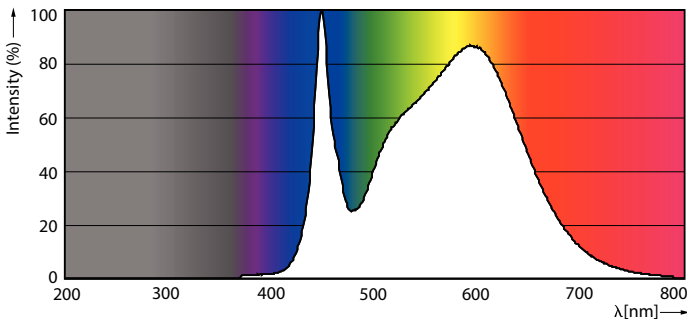
MASTER LED tube EM/Mains T8 with Recycled Plastic

Photometric data



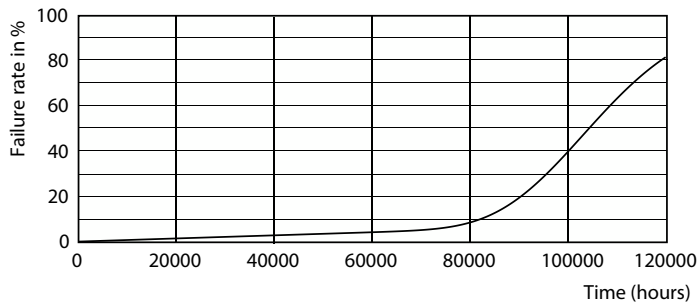
Light Distribution Diagram - MAS LEDtube 1050mm 16W 840 T8

General uniform lighting - MAS LEDtube 1050mm 16W 840 T8

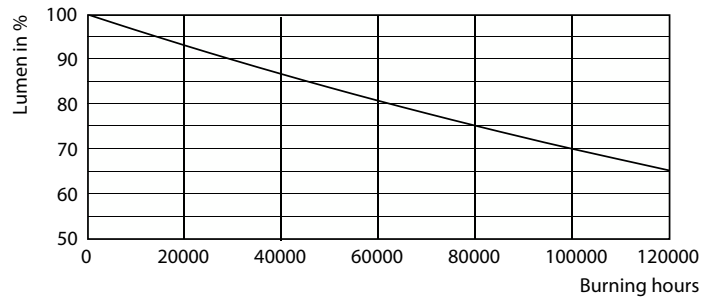


Spectral Power Distribution Colour - MAS LEDtube 1050mm 16W 840 T8

Lifetime



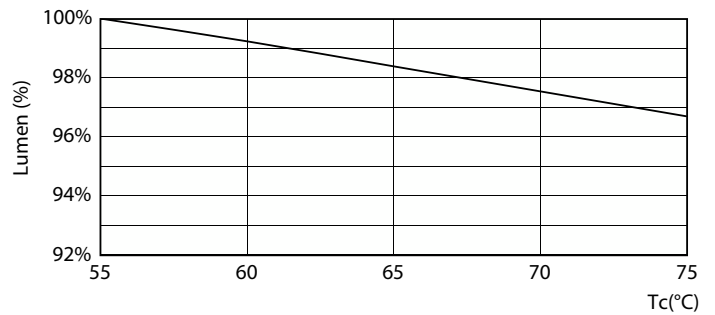
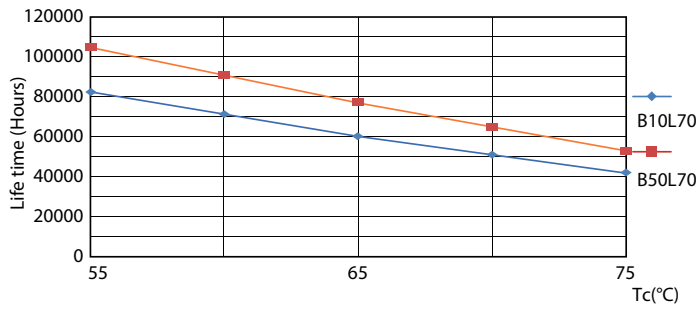
Life Expectancy Diagram



Lumen Maintenance Diagram - MAS LEDtube 1050mm 16W 840 T8

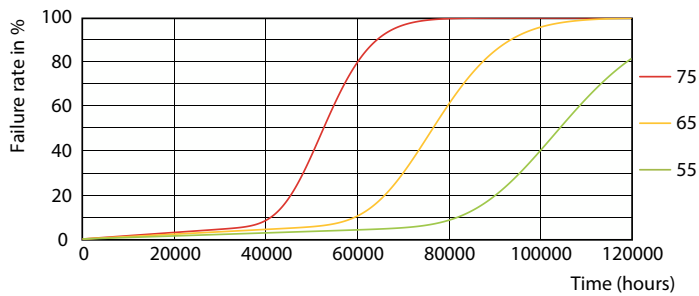
MASTER LED tube EM/Mains T8 with Recycled Plastic

Lifetime



Life Expectancy Diagram

Lumen Maintenance Diagram - MAS LEDtube 1050mm 16W 840 T8



Life Expectancy Diagram

