



# MasterClass InstantFit (UL Type-A) T8

13T8-6U/MAS/24-840/IF21/P/DIM 10/1

The MasterClass InstantFit T8 lamps provide hassle-free installation with simple lamp-for-lamp replacements. They deliver what we promise, with at least 40% energy savings, flicker-free performance, and the life you would expect. Other lamps claim compatibility but only MasterClass InstantFit (UL Type A) has been proven to work with over 200 ballasts and drivers, delivering even light output, with proven energy savings and a long average lifetime. End users will be delighted being under these comfortable and high quality lamps with no visible flicker and optimized optics. Energy managers will enjoy these lamps too as they can count the savings delivered by our lamps. To enjoy more energy savings, the MasterClass InstantFit lamps can be paired with the Advance TLED drivers to create a Type C system. With available 70,000 hour life, 7-year limited warranty and a shatter-prevention polycarbonate lens, Philips MasterClass InstantFit TLED lamps deliver benefits for all.

## Product data

| General Information |                                 |                                       |                 |
|---------------------|---------------------------------|---------------------------------------|-----------------|
| Cap-Base            | G13 [Medium Bi-Pin Fluorescent] | Luminous Flux                         | 2,100 lm        |
| Nominal lifetime    | 70,000 hour(s)                  | Color Designation                     | Cool White (CW) |
| Switching Cycle     | 50,000                          | Correlated Color Temperature (Nom)    | 4000 K          |
| Lighting Technology | LED                             | Luminous Efficacy (rated) (Nom)       | 161.00 lm/W     |
|                     |                                 | Color Consistency                     | <6              |
|                     |                                 | Color rendering index (CRI)           | 80              |
|                     |                                 | LLMF At End Of Nominal Lifetime (Nom) | 70 %            |
| Light Technical     |                                 |                                       |                 |
| Color Code          | 840 [CCT of 4000K]              |                                       |                 |
| Beam Angle (Nom)    | 180 degree(s)                   |                                       |                 |

MasterClass InstantFit (UL Type-A) T8

|                           |                |
|---------------------------|----------------|
| Operating and Electrical  |                |
| Line Frequency            | 20K to 120K Hz |
| Input Frequency           | 20K to 120K Hz |
| Power Consumption         | 13 W           |
| Wattage Equivalent        | 32 W           |
| Starting Time (Nom)       | 0.5 s          |
| Warm-up time to 60% light | 0.5 s          |
| Power Factor (Fraction)   | 0.9            |
| Voltage (Nom)             | 120-277, 347 V |
| UL Type                   | UL Type A      |

|                      |       |
|----------------------|-------|
| Temperature          |       |
| T-Case Maximum (Nom) | 50 °C |

|                      |     |
|----------------------|-----|
| Controls and Dimming |     |
| Dimmable             | Yes |

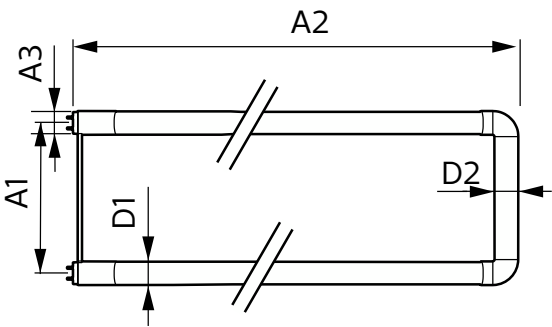
|                        |          |
|------------------------|----------|
| Mechanical and Housing |          |
| Bulb Finish            | Frosted  |
| Bulb Material          | Plastic  |
| Product Length         | 600 mm   |
| Bulb Shape             | T8       |
| Net Weight (Piece)     | 0.270 kg |

|                               |   |
|-------------------------------|---|
| Approval and Application      |   |
| Energy Saving Product         | Yes   |
| Approval Marks                | RoHS compliance UL certificate DLC compliance |
| Energy Consumption kWh/1000 h | - kWh   |
| Energy Certifications         | DLC Standard                                  |
| EU RoHS compliant             | Yes   |
| Ambient temperature range     | -20 °C to 45 °C                               |

|                                     |     |
|-------------------------------------|-----|
| Application Conditions              |     |
| can it be used in closed luminaires | Yes |

|                                 |                                    |
|---------------------------------|------------------------------------|
| Product Data                    |                                    |
| Order product name              | 13T8-6U/MAS/24-840/IF21/P/DIM 10/1 |
| Full product name               | 13T8-6U/MAS/24-840/IF21/P/DIM 10/1 |
| Order code                      | 929001987604                       |
| Material Nr. (12NC)             | 929001987604                       |
| Numerator - Quantity Per Pack   | 1                                  |
| EAN/UPC - Product/Case          | 046677541873                       |
| Numerator - Packs per outer box | 10                                 |
| EAN/UPC - Case                  | 50046677541878                     |

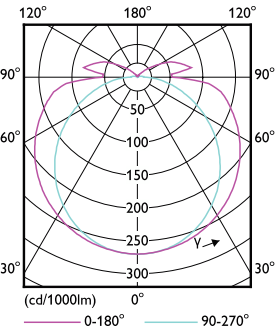
Dimensional drawing



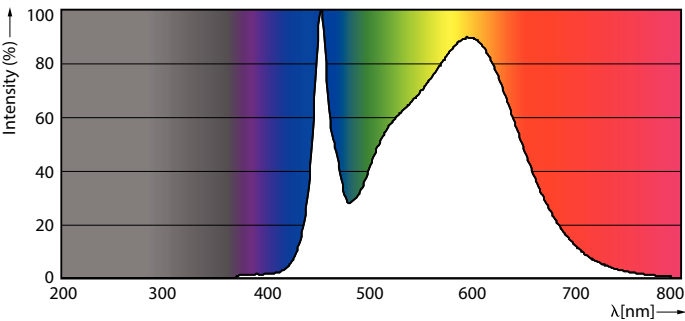
| Product                            | D1      | D2    | A1     | A2     | A3      |
|------------------------------------|---------|-------|--------|--------|---------|
| 13T8-6U/MAS/24-840/IF21/P/DIM 10/1 | 25.7 mm | 28 mm | 152 mm | 570 mm | 27.8 mm |

MasterClass InstantFit (UL Type-A) T8

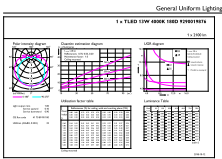
Photometric data



Light Distribution Diagram - 13T8-6U/MAS/24-840/IF21/P/DIM 10/1



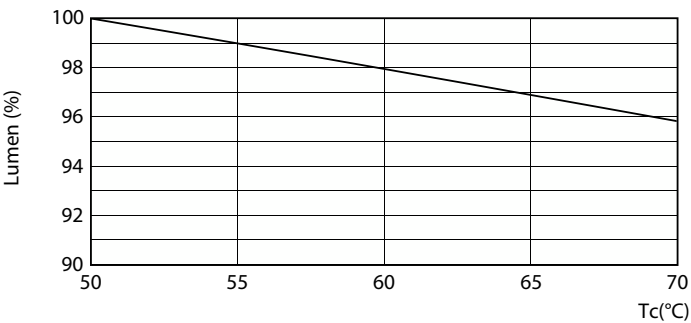
Spectral Power Distribution Colour - 13T8-6U/MAS/24-840/IF21/P/DIM 10/1



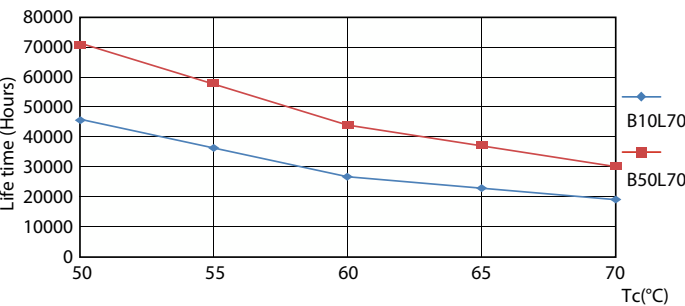
General Uniform Lighting  
1 x T8 6U MAS 24-840/IF21/P/DIM 10/1

General uniform lighting - 13T8-6U/MAS/24-840/IF21/P/DIM 10/1

Lifetime



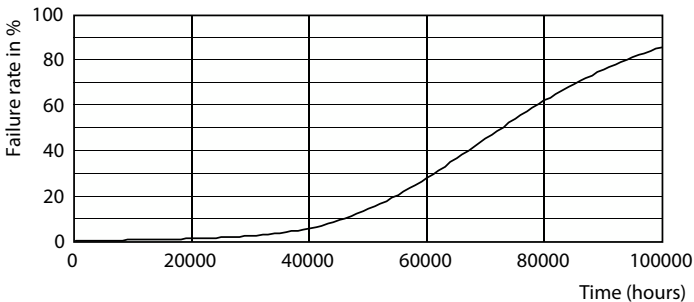
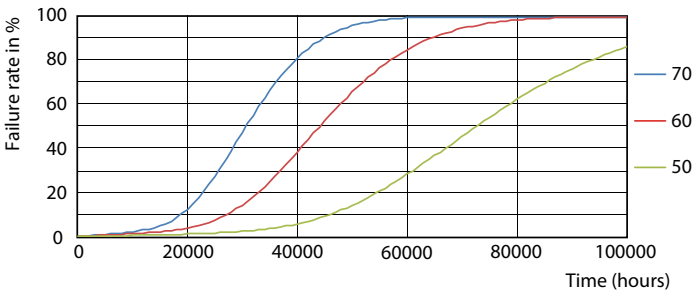
Lumen Maintenance Diagram - 13T8-6U/MAS/24-840/IF21/P/DIM 10/1



G13 4000K

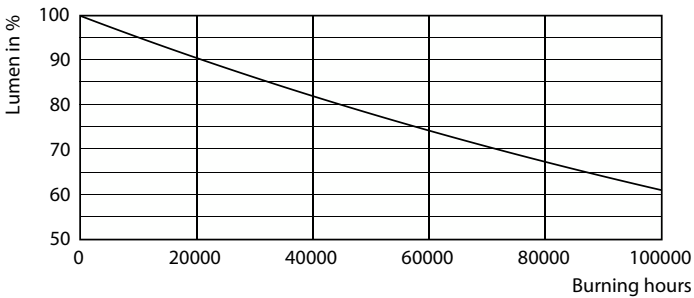
MasterClass InstantFit (UL Type-A) T8

Lifetime



G13 4000K

G13 4000K



Lumen Maintenance Diagram - 13T8-6U/MAS/24-840/IF21/P/DIM 10/1

