



MasterConnect T8

14T8/48-840/IF21/MC IA 10/1

MasterConnect, LED, T8, 14 W, 4000 K, 2100 lm, 70000 hour(s)

Introducing MasterConnect LED lamps - smart retrofit LED lamps that give you an easy and seamless way to upgrade to connected lighting. Simply set up with an intuitive app, MasterConnect LED lamps can be programmed to maximize energy savings, while providing wireless and automated light for your comfort and convenience. What's more, it is fully scalable and upgradable. If you want to enjoy further benefits such as remote control or management dashboard, you can simply keep the currently installed lamps and add a gateway to experience all the advantages of a cloud-based system. There's no better way to take lighting solutions to the next level.

Product data

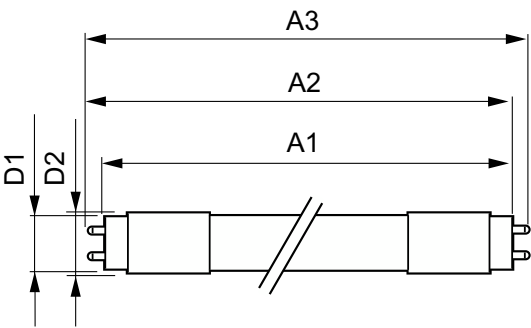
General Information		LLMF At End Of Nominal Lifetime (Nom) 70 %	
Cap-Base	G13 [Medium Bi-Pin Fluorescent]		
Nominal lifetime	70,000 hour(s)		
Switching Cycle	50,000		
Lighting Technology	LED		
Light Technical		Operating and Electrical	
Color Code	840 [CCT of 4000K]	Line Frequency	28K to 100K Hz
Beam Angle (Nom)	160 degree(s)	Input Frequency	28K to 100K Hz
Luminous Flux	2,100 lm	Power Consumption	14 W
Color Designation	Cool White (CW)	Lamp Current (Max)	380 mA
Correlated Color Temperature (Nom)	4000 K	Lamp Current (Min)	120 mA
Luminous Efficacy (rated) (Nom)	150.00 lm/W	Wattage Equivalent	32 W
Color Consistency	<6	Starting Time (Nom)	0.5 s
Color rendering index (CRI)	82	Warm-up time to 60% light	0.5 s
		Power Factor (Fraction)	0.9
		Voltage (Nom)	100-380 V
		UL Type	UL Type A

MasterConnect T8

Temperature	
T-Case Maximum (Nom)	40 °C
Controls and Dimming	
Dimmable	Wireless Dim
Connectivity	Interact Ready
Mechanical and Housing	
Bulb Finish	Frosted
Bulb Material	Plastic
Product Length	1,200 mm
Bulb Shape	T8
Net Weight (Piece)	0.220 kg
Approval and Application	
Energy Saving Product	Yes
Approval Marks	RoHS compliance UL certificate DLC compliance

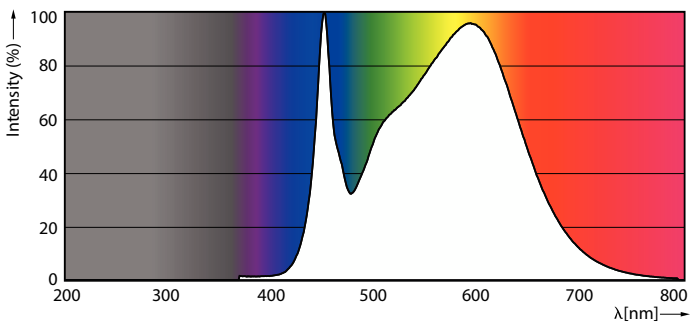
EU RoHS compliant	Yes
Ambient temperature range	-20 °C to 45 °C
Application Conditions	
can it be used in closed luminaires	Yes
Product Data	
Order product name	14T8/48-840/IF21/MC IA 10/1
Full product name	14T8/48-840/IF21/MC IA 10/1
Order code	547307
Material Nr. (12NC)	929002051904
Numerator - Quantity Per Pack	1
EAN/UPC - Product/Case	046677547301
Numerator - Packs per outer box	10
EAN/UPC - Case	50046677547306

Dimensional drawing

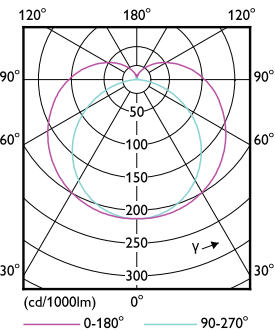


Product	D1	D2	A1	A2	A3
14T8/48-840/IF21/MC IA 10/1	25.7 mm	26.3 mm	1,198 mm	1,205 mm	1,212 mm

Photometric data

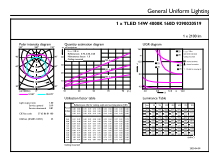


Spectral Power Distribution Colour - 14T8/48-840/IF21/MC IA 10/1



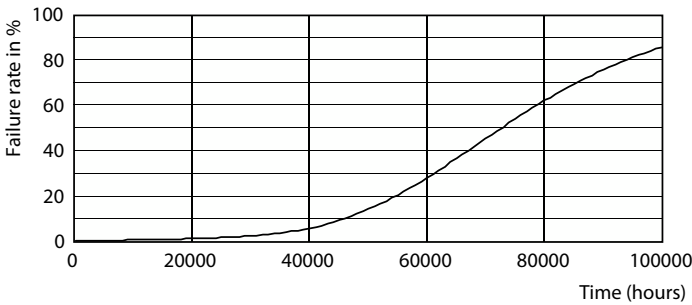
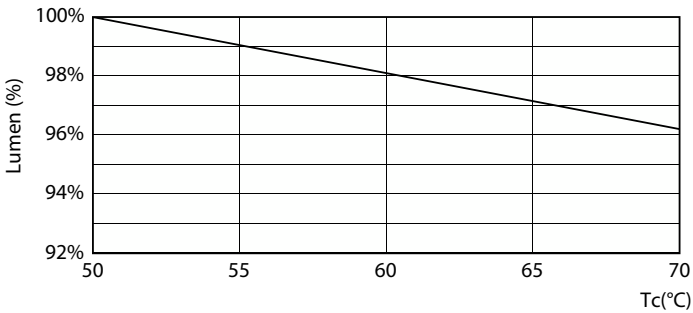
Light Distribution Diagram - 14T8/48-840/IF21/MC IA 10/1

Photometric data

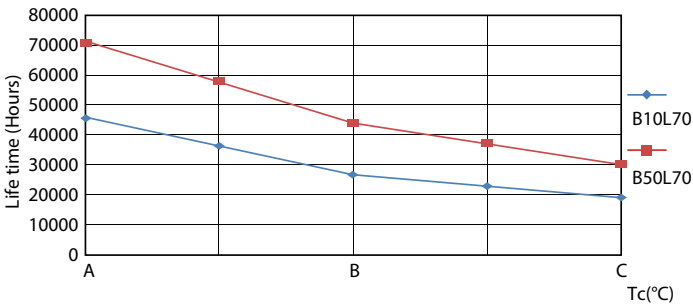


General uniform lighting - 14T8/48-840/IF21/MC IA 10/1

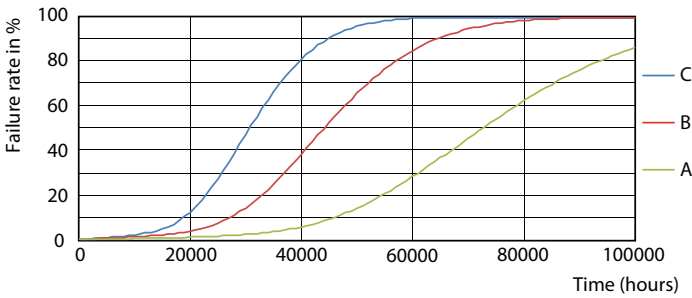
Lifetime



Lumen Maintenance Diagram - 14T8/48-840/IF21/MC IA 10/1



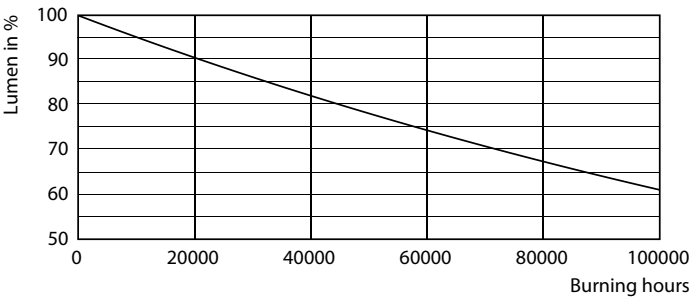
Life Expectancy Diagram



LEDtube_70K_LifetimeVsTc-LED

LEDtube_70K_FailureRate-LED

Lifetime



Lumen Maintenance Diagram - 14T8/48-840/IF21/MC IA 10/1

