



MASTER VALUE LEDspot MV

MASTER LED spot VLE D 680lm GU10 940 120D

Delivering a warm, halogen-like accent beam, the MASTER VALUE is a perfect fit for spot lighting. Thanks to its high CRI, it achieves more natural colours, creating cosy and comfortable ambience for residential and hospitality projects, and emphasising the beauty of merchandise in retail. These LED spots MV GU10 have the familiar look and feel of spot lamps, keeping the classic beauty of glass spots and adding the strong performance of LED technology. The dimming function enables you to create the atmosphere you desire, and it works with broad selection of dimmers. The MASTER VALUE also offers more energy savings than normal LED spots.

Warnings and Safety

- Operating temperature range is between -20° C and 45° C ambient
- Only to apply in dry or damp locations and most of open fixtures with lamp-holders that offer sufficient space (10 mm free air space)
- Not intended for use with emergency light fixtures or exit lights

Product data

General Information	
Cap base	GU10
Nominal lifetime	25,000 h
Switching Cycle	50,000
Lighting Technology	LED
Flux measurement reference	Sphere
Light Technical	
Colour Code	940 [CCT of 4000K]
Beam angle (nom.)	120 degree(s)
Luminous Flux	680 lm

Luminous intensity (nom.)	200 cd
Colour designation	Cool White (CW)
Correlated Colour Temperature (Nom)	4000 K
Luminous efficacy (rated) (nom.)	109.00 lm/W
Colour consistency	<6
Colour rendering index (CRI)	90
LLMF at end of nominal lifetime (nom.)	70 %
Photobiological safety according to EN 62471 RG1	
Operating and Electrical	
Line Frequency	50 to 60 Hz

MASTER VALUE LEDspot MV

Input frequency	50 to 60 Hz
Power Consumption	6.2 W
Lamp current (nom.)	33 mA
Starting time (nom.)	0.5 s
Warm-up time to 60% light	0.5 s
Power Factor (Fraction)	0.88
Voltage (nom.)	220–240 V

Temperature

T-Case maximum (nom.)	80 °C
-----------------------	-------

Controls and Dimming

Dimmable	Only with specific dimmers
----------	----------------------------

Mechanical and Housing

Bulb shape	PAR16
Net Weight (Piece)	0.038 kg

Approval and Application

Energy Efficiency Class	F
Suitable for accent lighting	No
Energy consumption kWh/1,000 hours	7 kWh
EPREL Registration Number	391918

EU RoHS compliant	Yes
EyeComfort	Yes
Flickering value (PstLM)	1
Stroboscopic effect	0.4

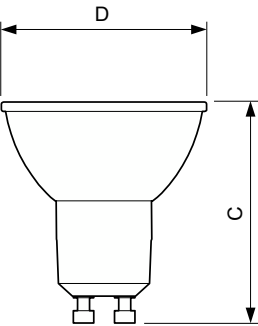
Application Conditions

Can it be used in closed luminaires	No
-------------------------------------	----

Product Data

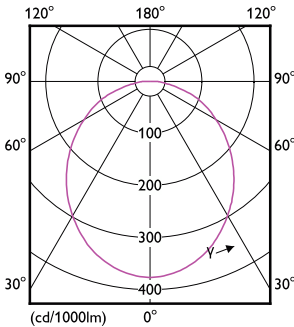
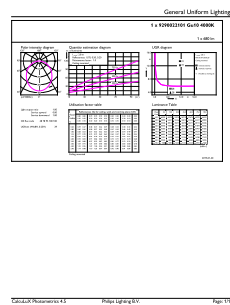
Order product name	MAS LED spot VLE D 680lm GU10 940 120D
Full product name	MASTER LED spot VLE D 680lm GU10 940 120D
Full EOC	871869970611100
Order code	70611100
Material no. (12 NC)	929002210102
Numerator – quantity per pack	1
EAN/UPC – Product/Case	8718699706111
Numerator – packs per outer box	10
EAN/UPC – Case	8718699706555

Dimensional drawing



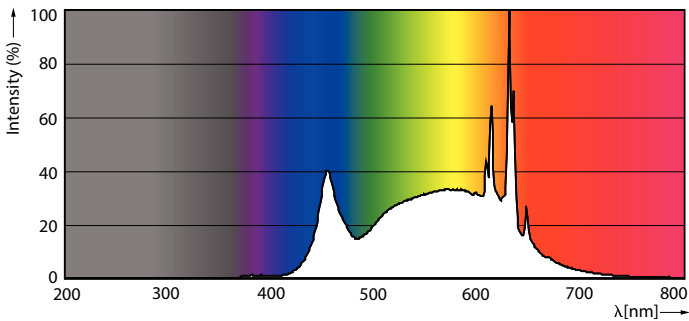
Product	D	C
MAS LED spot VLE D 680lm GU10 940 120D	50 mm	54 mm

Photometric data



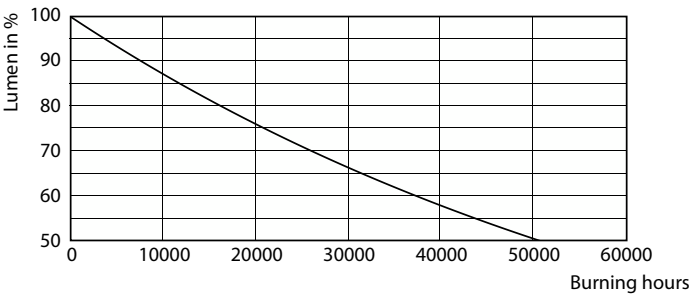
Accent Lighting Spots - MAS LED spot VLE D 680lm GU10 940 120D

Light Distribution Diagram - MAS LED spot VLE D 680lm GU10 940 120D

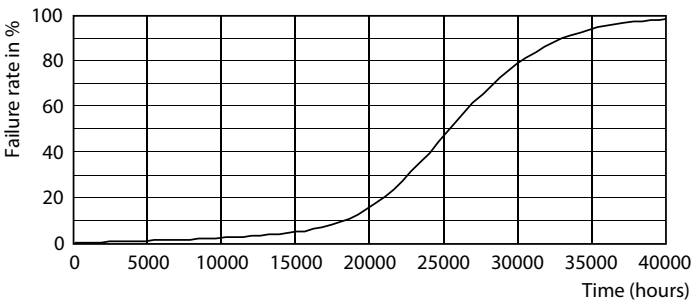


Spectral Power Distribution Colour - MAS LED spot VLE D 680lm GU10 940 120D

Lifetime



Lumen Maintenance Diagram - MAS LED spot VLE D 680lm GU10 940 120D



25K LED

MASTER VALUE LEDspot MV

