

MasterConnect LEDtube EM/mains T8



MasterConnect LEDtube IA 1200mm UO 16W840 T8

Introducing MasterConnect LEDtubes – smart retrofit LED T8 lamps that give you an easy and seamless way to upgrade to connected lighting. Simply set up with an intuitive app and MasterConnect LED tube lighting can be programmed to maximise energy savings, while providing wireless and automated light for your comfort and convenience. What's more, it is fully scalable and upgradable. If you want to enjoy additional benefits such as remote control or a management dashboard, you can simply keep the lamps you currently have installed and add a gateway to experience all the advantages of a cloud-based system. There's no better way to take lighting solutions to the next level.

Product data

General Information		Operating and Electrical	
Cap base	G13 [Medium Bi-Pin Fluorescent]	Colour consistency	<6
Nominal lifetime	60,000 h	Colour rendering index (CRI)	83
Switching Cycle	200,000	LLMF at end of nominal lifetime (nom.)	70 %
Lighting Technology	LED	Photobiological safety according to EN 62471	RG0
Flux measurement reference	Sphere		
Light Technical		Line Frequency	50 to 60 Hz
Colour Code	840 [CCT of 4000K]	Input frequency	50 to 60 Hz
Beam angle (nom.)	160 degree(s)	Power Consumption	16 W
Luminous Flux	2,500 lm	Lamp current (max.)	76 mA
Colour designation	Cool White (CW)	Lamp current (min.)	69 mA
Correlated Colour Temperature (Nom)	4000 K	Starting time (nom.)	0.5 s
Luminous efficacy (rated) (nom.)	156 lm/W	Warm-up time to 60% light	0.5 s
		Power Factor (Fraction)	0.9

MasterConnect LEDtube EM/mains T8

Voltage (nom.)	220-240 V
LED alternative to fluorescent lamp power	36 W
Inrush current at mains	6.8
Max. lamp no. on MCB B type 10A – Mains	108
Max. lamp no. on MCB B type 10A – EM ballast without Compensation Capacitor.	108
Max. lamp no. on MCB B type 10A – EM ballast with Compensation Capacitor.	22
Max. lamp no. on MCB B type 16A – Mains	173
Max. lamp no. on MCB B type 16A – EM ballast without Compensation Capacitor.	173
Max. lamp no. on MCB B type 16A – EM ballast with Compensation Capacitor.	35
Ballast Compatibility	EM/Mains

Temperature

T-Case maximum (nom.)	50 °C
-----------------------	-------

Controls and Dimming

Dimmable	Wireless Dim
----------	--------------

Mechanical and Housing

Product length	1,200 mm
Bulb shape	T8
Net Weight (Piece)	0.230 kg

Approval and Application

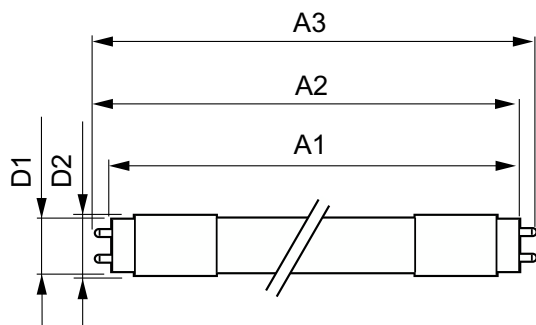
Energy Efficiency Class	D
-------------------------	---

Energy-saving product	Yes
Approval marks	RoHS compliance KEMA Keur certificate
Energy consumption kWh/1,000 hours	16 kWh
EPREL Registration Number	406200
CE mark	Yes
EU RoHS compliant	Yes
Flickering value (PstLM)	1
Stroboscopic effect	0.9
Ambient temperature range	-20°C to 45°C

Product Data

Order product name	MC LEDtube IA 1200mm UO 16W840 T8
Full product name	MasterConnect LEDtube IA 1200mm UO 16W840 T8
Full EOC	871869966970600
Order code	66970600
Material no. (12 NC)	929002210402
Numerator – quantity per pack	1
EAN/UPC – Product/Case	8718699669706
Numerator – packs per outer box	10
EAN/UPC – Case	8718699669713

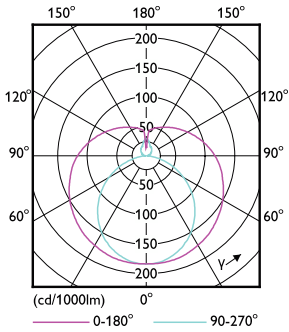
Dimensional drawing



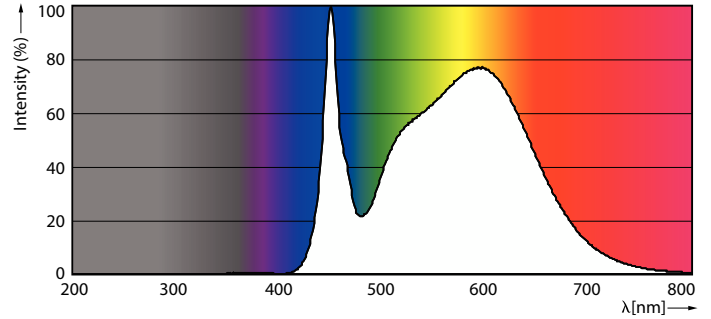
Product	D1	D2	A1	A2	A3
MC LEDtube IA 1200mm UO 16W840 T8	25.8 mm	28 mm	1,198.2 mm	1,205.3 mm	1,212.4 mm

MasterConnect LEDtube EM/mains T8

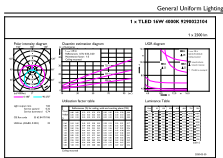
Photometric data



Light Distribution Diagram - MC LEDtube IA 1200mm UO 16W840 T8



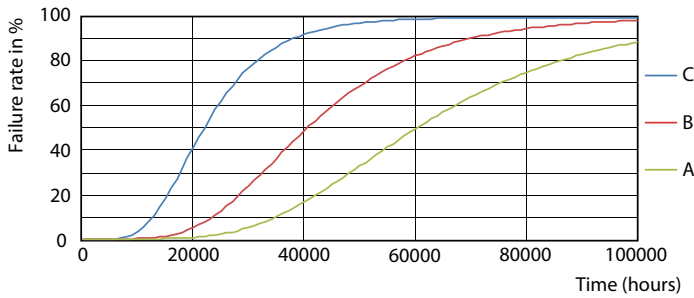
Spectral Power Distribution Colour - MC LEDtube IA 1200mm UO 16W840 T8



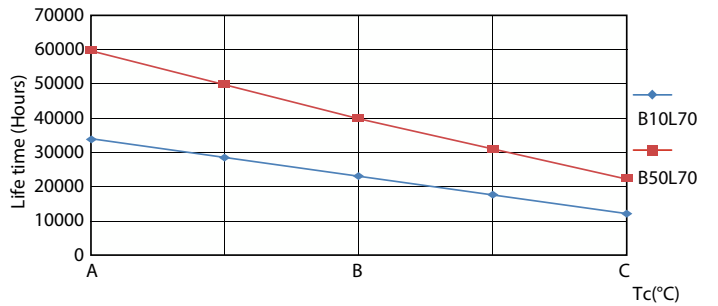
Technical Parameters (1) Page Lighting (3) Page 1/1

General uniform lighting - MC LEDtube IA 1200mm UO 16W840 T8

Lifetime



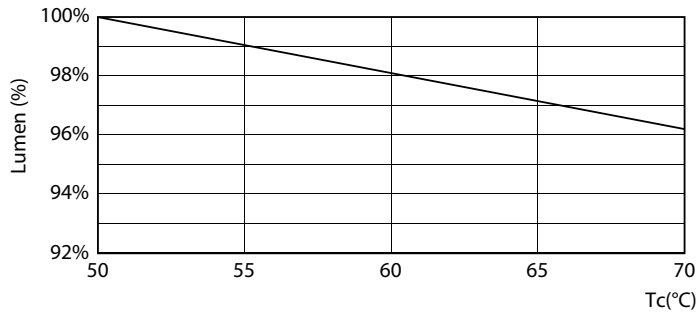
FailureRate



LifetimeVsTc

MasterConnect LEDtube EM/mains T8

Lifetime



Lumen Maintenance Diagram - MC LEDtube IA 1200mm UO 16W840 T8

Lumen Maintenance Diagram - MC LEDtube IA 1200mm UO 16W840 T8



Life Expectancy Diagram

