

MasterConnect LEDtube EM/mains T8



MasterConnect LEDtube IA 1500mm UO 25W865 T8

Introducing MasterConnect LEDtubes – smart retrofit LED T8 lamps that give you an easy and seamless way to upgrade to connected lighting. Simply set up with an intuitive app and MasterConnect LED tube lighting can be programmed to maximise energy savings, while providing wireless and automated light for your comfort and convenience. What's more, it is fully scalable and upgradable. If you want to enjoy additional benefits such as remote control or a management dashboard, you can simply keep the lamps you currently have installed and add a gateway to experience all the advantages of a cloud-based system. There's no better way to take lighting solutions to the next level.

Product data

General Information		Operating and Electrical	
Cap base	G13 [Medium Bi-Pin Fluorescent]	Correlated Colour Temperature	6500 K
Nominal lifetime	60,000 h	Luminous efficacy (rated) (nom.)	148 lm/W
Switching Cycle	200,000	Colour consistency	<6
Lighting Technology	LED	Colour rendering index (CRI)	83
Flux measurement reference	Sphere	LLMF at end of nominal lifetime (nom.)	70 %
CE mark	Yes	Flickering value (PstLM)	1
EU RoHS compliant	Yes	Stroboscopic effect	0.9
		Photobiological safety according to EN 62471	RG0
Light Technical			
Colour Code	865 [CCT of 6500K]	Line Frequency	50 to 60 Hz
Beam angle (nom.)	160 degree(s)	Input frequency	50 to 60 Hz
Luminous Flux	3,700 lm	Power Consumption	25 W
Colour designation	Cool Daylight	Lamp current (max.)	117 mA

MasterConnect LEDtube EM/mains T8

Lamp current (min.)	108 mA
Starting time (nom.)	0.5 s
Warm-up time to 60% light	0.5 s
Power Factor (Fraction)	0.9
Voltage (nom.)	220–240 V
LED alternative to fluorescent lamp power	58 W
Inrush current at mains	9
Max. lamp no. on MCB B type 10A — Mains	73
Max. lamp no. on MCB B type 10A — EM ballast without Comp. Cap.	73
Max. lamp no. on MCB B type 10A — EM ballast with Comp. Cap.	15
Max. lamp no. on MCB B type 16A — Mains	116
Max. lamp no. on MCB B type 16A — EM ballast without Comp. Cap.	116
Max. lamp no. on MCB B type 16A — EM ballast with Comp. Cap.	24
Ballast Compatibility	EM/Mains

Temperature

Ambient temperature range	–20°C to 45°C
T-Case maximum (nom.)	65 °C

Controls and Dimming

Dimmable	Wireless Dim
----------	--------------

Mechanical and Housing	
Product length	1,500 mm
Bulb shape	T8

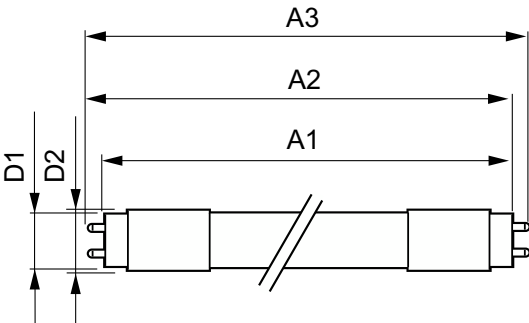
Approval and Application

Energy Efficiency Class	D
Energy-saving product	Yes
Approval marks	RoHS compliance TUV CE marking KEMA Keur certificate
Energy consumption kWh/1,000 hours	25 kWh
EPREL registration number	406203

Product Data

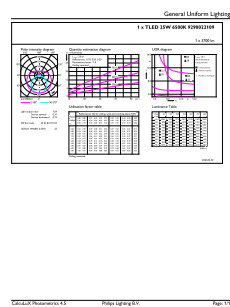
Order product name	MC LEDtube IA 1500mm UO 25W865 T8
Full product name	MasterConnect LEDtube IA 1500mm UO 25W865 T8
Full EOC	871869966978200
Order code	66978200
Material no. (12 NC)	929002210902
SAP numerator – quantity per pack	1
EAN/UPC – Product/Case	8718699669782
Numerator – packs per outer box	10
EAN/UPC – Case	8718699669799

Dimensional drawing

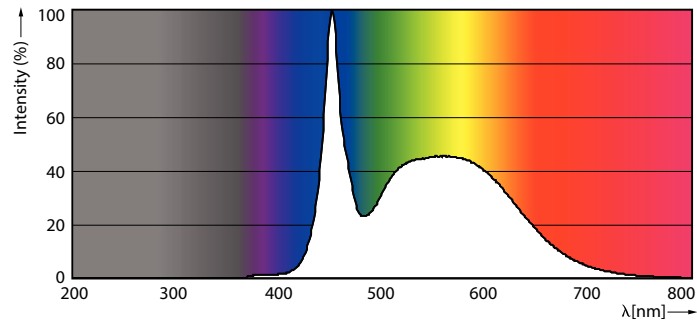


Product	D1	D2	A1	A2	A3
MC LEDtube IA 1500mm UO 25W865 T8	25.8 mm	28 mm	1,498.7 mm	1,505.8 mm	1,512.9 mm

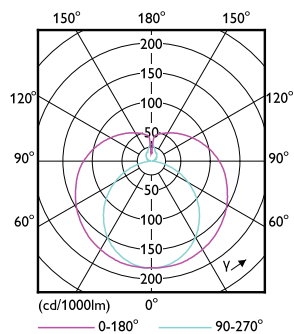
Photometric data



General uniform lighting - MC LEDtube IA 1500mm UO 25W865 T8

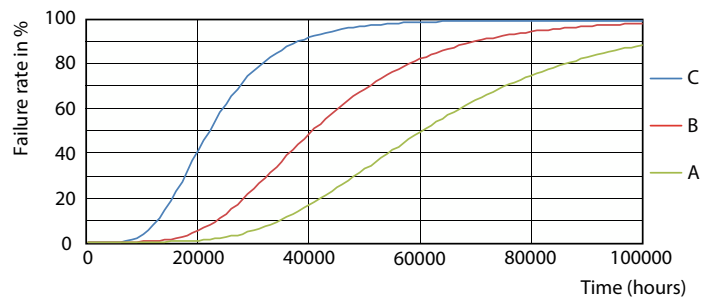


Spectral Power Distribution Colour - MC LEDtube IA 1500mm UO 25W865 T8

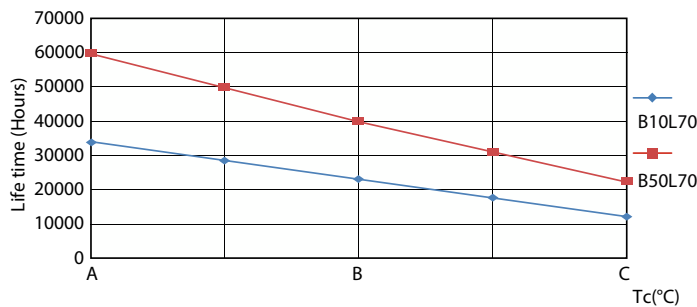


Light Distribution Diagram - MC LEDtube IA 1500mm UO 25W865 T8

Lifetime



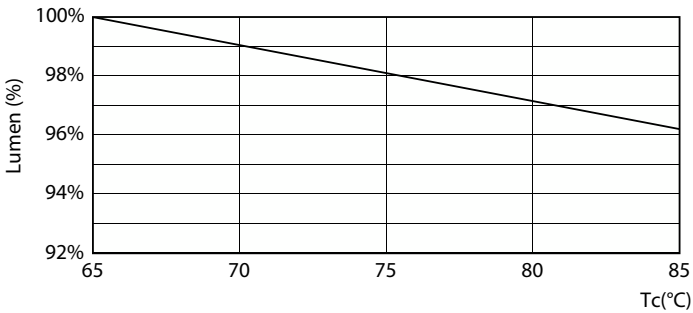
Life Expectancy Diagram - MC LEDtube IA 1500mm UO 25W865 T8



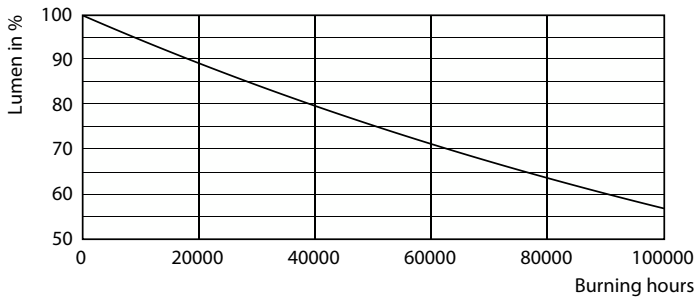
Life Expectancy Diagram - MC LEDtube IA 1500mm UO 25W865 T8

MasterConnect LEDtube EM/mains T8

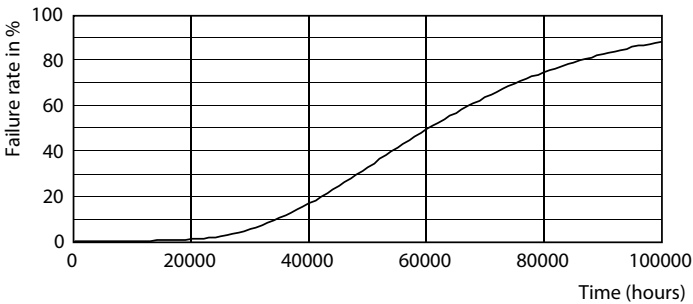
Lifetime



Lumen Maintenance Diagram - MC LEDtube IA 1500mm UO 25W865 T8



Lumen Maintenance Diagram - MC LEDtube IA 1500mm UO 25W865 T8



Life Expectancy Diagram - MC LEDtube IA 1500mm UO 25W865 T8

