

MasterConnect LEDtube EM/mains T8



MasterConnect LEDtube IA 600mm HO 7W865 T8

Introducing MasterConnect LEDtubes – smart retrofit LED T8 lamps that give you an easy and seamless way to upgrade to connected lighting. Simply set up with an intuitive app and MasterConnect LED tube lighting can be programmed to maximise energy savings, while providing wireless and automated light for your comfort and convenience. What’s more, it is fully scalable and upgradable. If you want to enjoy additional benefits such as remote control or a management dashboard, you can simply keep the lamps you currently have installed and add a gateway to experience all the advantages of a cloud-based system. There’s no better way to take lighting solutions to the next level.

Product data

General Information	
Cap base	G13 [Medium Bi-Pin Fluorescent]
Nominal lifetime	60,000 h
Switching Cycle	200,000
Lighting Technology	LED
Flux measurement reference	Sphere
Light Technical	
Colour Code	865 [CCT of 6500K]
Beam angle (nom.)	160 degree(s)
Luminous Flux	1,050 lm
Colour designation	Cool Daylight
Correlated Colour Temperature (Nom)	6500 K
Luminous efficacy (rated) (nom.)	150 lm/W
Colour consistency	<6
Colour rendering index (CRI)	83

LLMF at end of nominal lifetime (nom.)	70 %
Photobiological safety according to EN 62471	RG0
Operating and Electrical	
Line Frequency	50 to 60 Hz
Input frequency	50 to 60 Hz
Power Consumption	7 W
Lamp current (max.)	37 mA
Lamp current (min.)	34 mA
Starting time (nom.)	0.5 s
Warm-up time to 60% light	0.5 s
Power Factor (Fraction)	0.9
Voltage (nom.)	220–240 V
LED alternative to fluorescent lamp power	18 W
Inrush current at mains	4.4
Max. lamp no. on MCB B type 10A — Mains	242

MasterConnect LEDtube EM/mains T8

Max. lamp no. on MCB B type 10A – EM ballast without Compensation Capacitor.	242
Max. lamp no. on MCB B type 10A – EM ballast with Compensation Capacitor.	25
Max. lamp no. on MCB B type 16A – Mains	388
Max. lamp no. on MCB B type 16A – EM ballast without Compensation Capacitor.	388
Max. lamp no. on MCB B type 16A – EM ballast with Compensation Capacitor.	40
Ballast Compatibility	EM/Mains

Temperature

T-Case maximum (nom.)	40 °C
-----------------------	-------

Controls and Dimming

Dimmable	Wireless Dim
----------	--------------

Mechanical and Housing

Product length	600 mm
Bulb shape	T8
Net Weight (Piece)	0.150 kg

Approval and Application

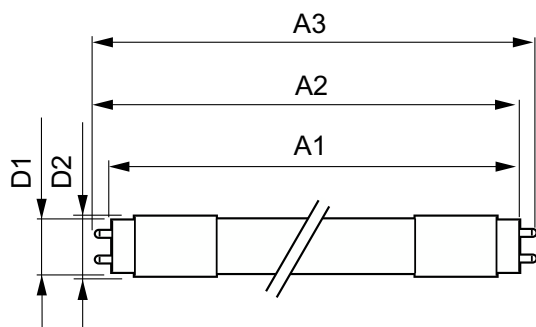
Energy Efficiency Class	D
Energy-saving product	Yes

Approval marks	RoHS compliance KEMA Keur certificate
Energy consumption kWh/1,000 hours	7 kWh
EPREL Registration Number	406207
CE mark	Yes
EU RoHS compliant	Yes
Flickering value (PstLM)	1
Stroboscopic effect	0.9
Ambient temperature range	-20°C to 45°C

Product Data

Order product name	MC LEDtube IA 600mm HO 7W865 T8
Full product name	MasterConnect LEDtube IA 600mm HO 7W865 T8
Full EOC	871869971750600
Order code	71750600
Material no. (12 NC)	929002295402
Numerator – quantity per pack	1
EAN/UPC – Product/Case	8718699717506
Numerator – packs per outer box	10
EAN/UPC – Case	8718699717513

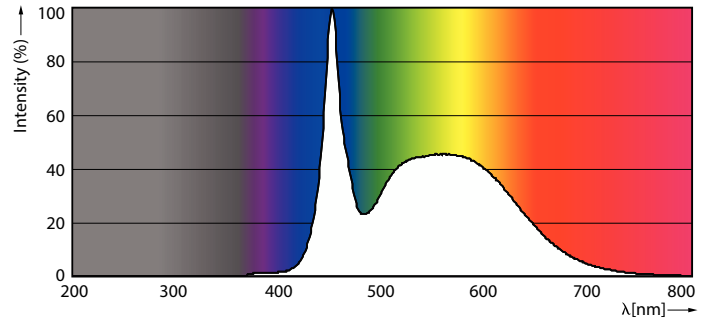
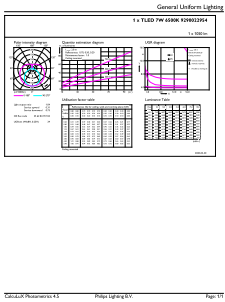
Dimensional drawing



Product	D1	D2	A1	A2	A3
MC LEDtube IA 600mm HO 7W865 T8	25.8 mm	28 mm	588.5 mm	595.5 mm	602.5 mm

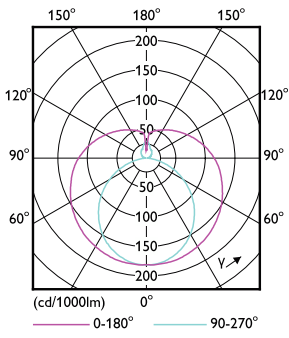
MasterConnect LEDtube EM/mains T8

Photometric data



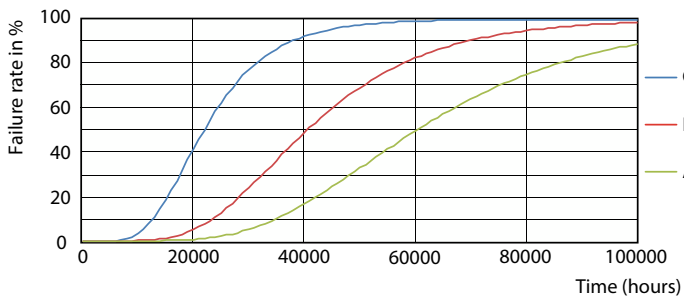
General uniform lighting - MC LEDtube IA 600mm HO 7W865 T8

Spectral Power Distribution Colour - MC LEDtube IA 600mm HO 7W865 T8

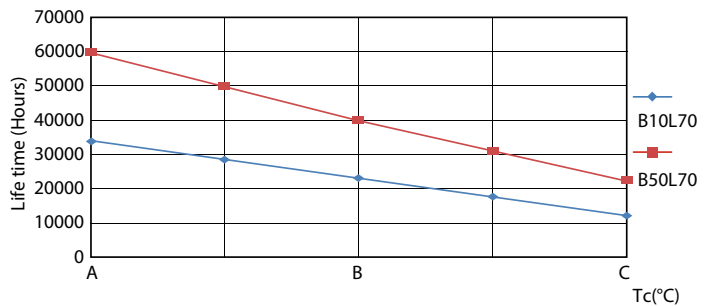


Light Distribution Diagram - MC LEDtube IA 600mm HO 7W865 T8

Lifetime



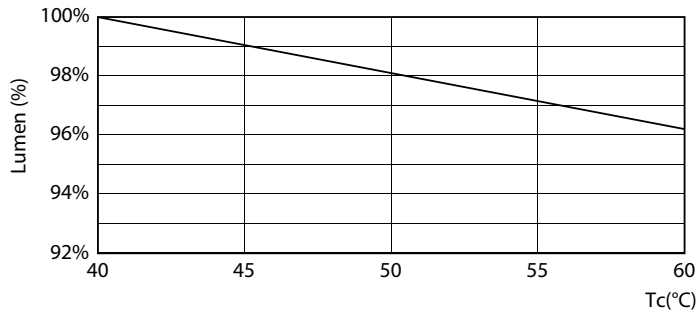
FailureRate



LifetimeVsTc

MasterConnect LEDtube EM/mains T8

Lifetime



Lumen Maintenance Diagram - MC LEDtube IA 600mm HO 7W865 T8

Lumen Maintenance Diagram - MC LEDtube IA 600mm HO 7W865 T8



Life Expectancy Diagram

