



MASTER LED tube InstantFit HF T5



MAS LEDtube HF 1200mm HO 26W 865 T5 OE

MASTER, LEDtube, T5, HF, 1200 mm, 26 W, 54W TL5 HO, 6500 K, 3900 lm, CRI 80, 60000 h

The Philips MASTER LEDtube integrates an LED light source into a traditional fluorescent form factor. Its unique design creates a perfectly uniform visual appearance, which cannot be distinguished from traditional fluorescents. These T5 lighting tubes are the right choice for absolute performance and are designed to stand up to everyday conditions. Unparalleled savings, thanks to low energy consumption and an exceptionally long lifetime, make these T5 LED tubes the choice for every demanding applications.

Product data

General Information	
Cap base	G5
Nominal lifetime	60,000 h
Switching Cycle	50,000
Lighting Technology	LEDtube
Flux measurement reference	Sphere
Warranty period	5 years
Light Technical	
Colour Code	865 [CCT of 6500K]
Beam angle (nom.)	200 degree(s)
Luminous Flux	3,900 lm
Colour designation	Cool Daylight
Correlated Colour Temperature (Nom)	6500 K

Luminous efficacy (rated) (nom.)	150 lm/W
Colour consistency	<6
Colour rendering index (CRI)	80
LLMF at end of nominal lifetime (nom.)	70 %
Photobiological safety according to EN 62471	RG0
Operating and Electrical	
Line Frequency	30K to 60K Hz
Input frequency	30 K to 60 K Hz
Power Consumption	26 W
Lamp current (max.)	620 mA
Lamp current (min.)	300 mA
Starting time (nom.)	0.5 s
Warm-up time to 60% light	0.5 s

MASTER LED tube InstantFit HF T5

Power Factor (Fraction)	0.92
Voltage (nom.)	20-90 V
LED alternative to fluorescent lamp power	54W TL5 HO
Inrush current at mains	-
Max. lamp no. on MCB B type 10A – Mains	-
Max. lamp no. on MCB B type 10A – EM ballast without Compensation Capacitor.	-
Max. lamp no. on MCB B type 10A – EM ballast with Compensation Capacitor.	-
Max. lamp no. on MCB B type 16A – Mains	-
Max. lamp no. on MCB B type 16A – EM ballast without Compensation Capacitor.	-
Max. lamp no. on MCB B type 16A – EM ballast with Compensation Capacitor.	-
Ballast Compatibility	HF

Temperature

T-Case maximum (nom.)	50 °C
-----------------------	-------

Controls and Dimming

Dimmable	Yes – Check ballast compatibility
----------	-----------------------------------

Mechanical and Housing

Lamp Finish	Frosted
Bulb material	Glass
Product length	1,200 mm
Bulb shape	T5
Net Weight (Piece)	0.160 kg

Approval and Application

Energy Efficiency Class	D
Energy-saving product	Yes
Approval marks	RoHS compliance KEMA Keur certificate
Energy consumption kWh/1,000 hours	26 kWh
EPREL Registration Number	1384142
CE mark	Yes
EU RoHS compliant	Yes
Ambient temperature range	-20°C to 45°C

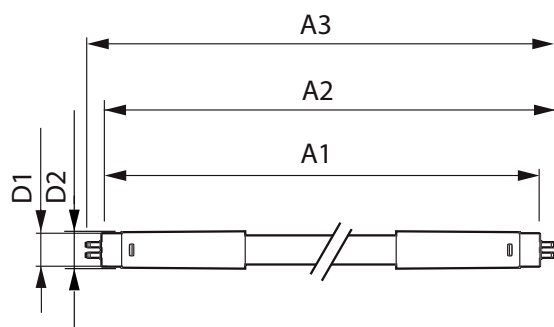
Application Conditions

Wireless Technology	Not applicable
---------------------	----------------

Product Data

Order product name	MAS LEDtube HF 1200mm HO 26W 865 T5 OE
Full product name	MAS LEDtube HF 1200mm HO 26W 865 T5 OE
Full EOC	871869974955200
Order code	929002352202
Material no. (12 NC)	929002352202
Numerator – quantity per pack	1
EAN/UPC – Product/Case	8718699749552
Numerator – packs per outer box	10
EAN/UPC – Case	8718699749569

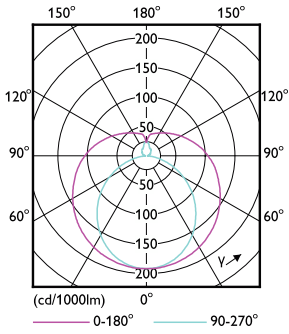
Dimensional drawing



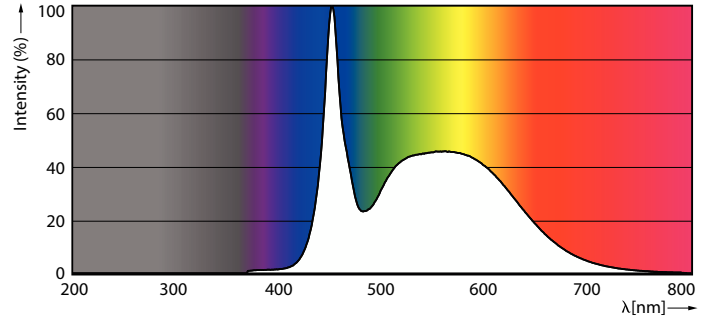
Product	D1	D2	A1	A2	A3
MAS LEDtube HF 1200mm HO 26W 865 T5 OE	15.5 mm	19 mm	1,149 mm	1,156 mm	1,163 mm

MASTER LED tube InstantFit HF T5

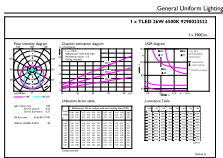
Photometric data



Light Distribution Diagram - MAS LEDtube HF 1200mm HO 26W 865 T5 OE

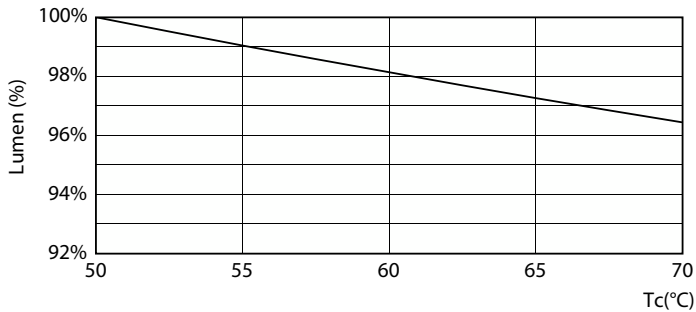


Spectral Power Distribution Colour - MAS LEDtube HF 1200mm HO 26W 865 T5 OE

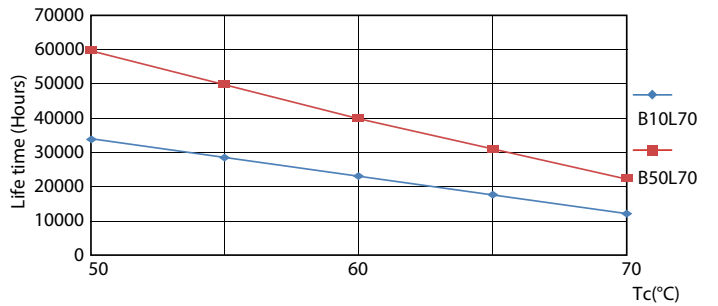


General uniform lighting - MAS LEDtube HF 1200mm HO 26W 865 T5 OE

Lifetime



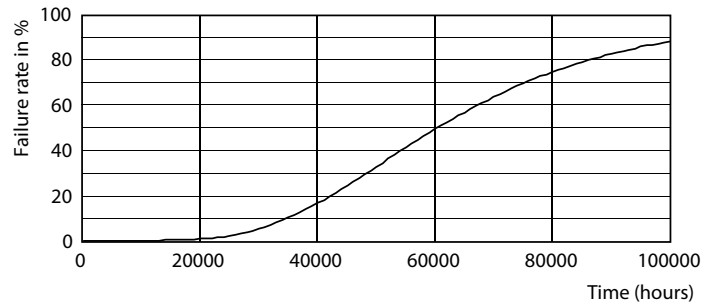
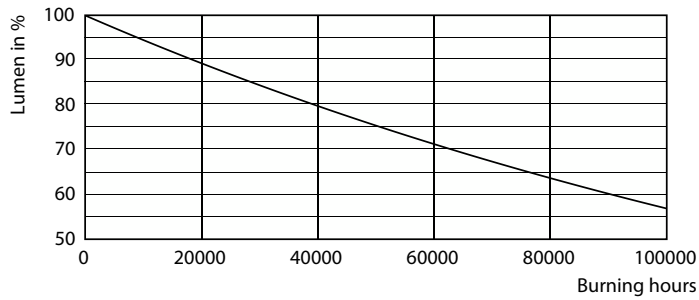
Lumen Maintenance Diagram - MAS LEDtube HF 1200mm HO 26W 865 T5 OE



LEDtube 60K 5070 LifetimeVsTc-LED

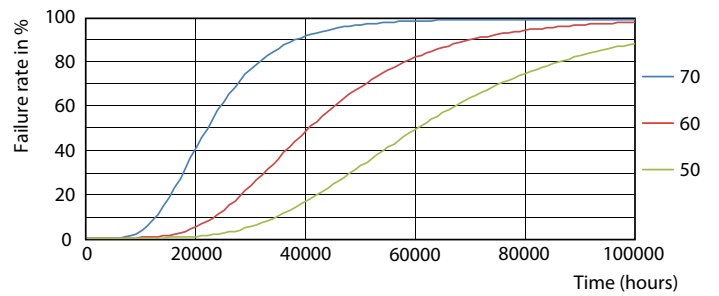
MASTER LED tube InstantFit HF T5

Lifetime



Lumen Maintenance Diagram - MAS LEDtube HF 1200mm HO 26W 865 T5
OE

Life Expectancy Diagram



LEDtube 60K 5070 FailureRate-LED

