



# MASTER LED tube Mains T5



## MAS LEDtube 1500mm UO 36W 865 T5

MASTER, LEDtube, T5, Mains, 1500 mm, 36 W, 80W TL5 HO, 6500 K, 5600 lm, CRI 80, 50000 h

The new Philips Master LEDtube Mains T5 brings simplicity to your lighting project. You don't need to pay attention to the driver technology anymore. Thanks to a unique design, Philips MASTER LEDtube Mains T5 installs in luminaires operating on mains power connection. So simple to operate! . Perfectly safe, reliable & easy to install, the Philips MASTER LEDtube Mains T5 is the ideal alternative to standard fluorescent tubes to maximise value over lifetime with high energy savings and lower maintenance costs.

### Product data

General Information		Luminous efficacy (rated) (nom.)		155 lm/W
Cap base	G5	Colour consistency	<6	
Nominal lifetime	50,000 h	Colour rendering index (CRI)	80	
Switching Cycle	200,000	LLMF at end of nominal lifetime (nom.)	70 %	
Lighting Technology	LEDtube	Photobiological safety according to EN 62471	RG0	
Flux measurement reference	Sphere			
Warranty period	5 years			
Light Technical		Operating and Electrical		
Colour Code	865 [CCT of 6500K]	Line Frequency	50 to 60 Hz	
Beam angle (nom.)	200 degree(s)	Input frequency	50 to 60 Hz	
Luminous Flux	5,600 lm	Power Consumption	36 W	
Colour designation	Cool Daylight	Lamp current (nom.)	160 mA	
Correlated Colour Temperature (Nom)	6500 K	Starting time (nom.)	0.5 s	
		Warm-up time to 60% light	0.5 s	
		Power Factor (Fraction)	0.92	

# MASTER LED tube Mains T5

Voltage (nom.)	220-240 V
LED alternative to fluorescent lamp power	80W TL5 HO
Inrush current at mains	10.1
Max. lamp no. on MCB B type 10A – Mains	21
Max. lamp no. on MCB B type 10A – EM ballast without Compensation Capacitor.	-
Max. lamp no. on MCB B type 10A – EM ballast with Compensation Capacitor.	-
Max. lamp no. on MCB B type 16A – Mains	34
Max. lamp no. on MCB B type 16A – EM ballast without Compensation Capacitor.	-
Max. lamp no. on MCB B type 16A – EM ballast with Compensation Capacitor.	-
Ballast Compatibility	Mains

## Temperature

T-Case maximum (nom.)	75 °C
-----------------------	-------

## Controls and Dimming

Dimmable	No
----------	----

## Mechanical and Housing

Lamp Finish	Frosted
Bulb material	Glass
Product length	1,500 mm
Bulb shape	T5
Net Weight (Piece)	0.196 kg

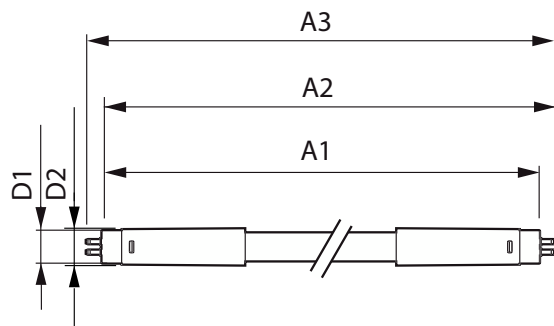
## Approval and Application

Energy Efficiency Class	D
Energy-saving product	Yes
Approval marks	RoHS compliance KEMA Keur certificate
Energy consumption kWh/1,000 hours	36 kWh
EPREL Registration Number	403648
CE mark	Yes
EU RoHS compliant	Yes
Flickering value (PstLM)	1
Stroboscopic effect	0.4
Ambient temperature range	-20°C to 45°C

## Product Data

Order product name	MAS LEDtube 1500mm UO 36W 865 T5
Full product name	MAS LEDtube 1500mm UO 36W 865 T5
Full EOC	871951429054900
Order code	929002475002
Material no. (12 NC)	929002475002
Numerator – quantity per pack	1
EAN/UPC – Product/Case	8719514290549
Numerator – packs per outer box	10
EAN/UPC – Case	8719514290556

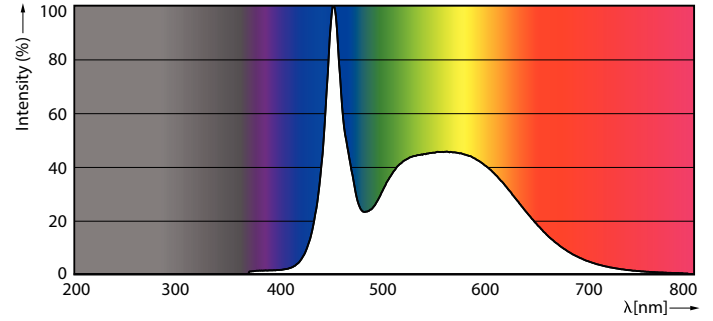
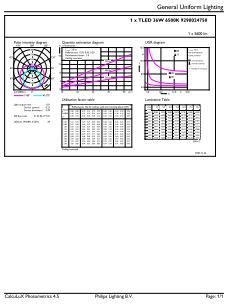
## Dimensional drawing



Product	D1	D2	A1	A2	A3
MAS LEDtube 1500mm UO 36W 865 T5	15.5 mm	18.8 mm	1,449 mm	1,456.1 mm	1,463.2 mm

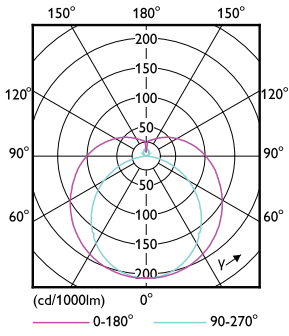
# MASTER LED tube Mains T5

## Photometric data



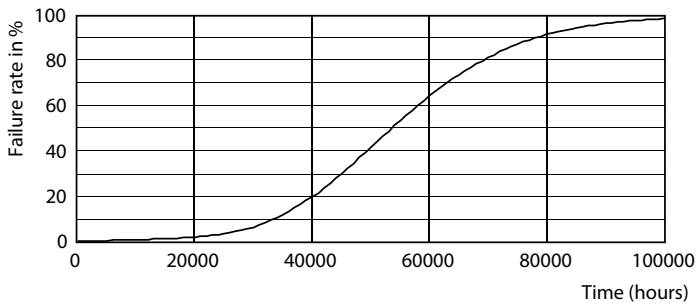
General uniform lighting - MAS LEDtube 1500mm UO 36W 865 T5

Spectral Power Distribution Colour - MAS LEDtube 1500mm UO 36W 865 T5

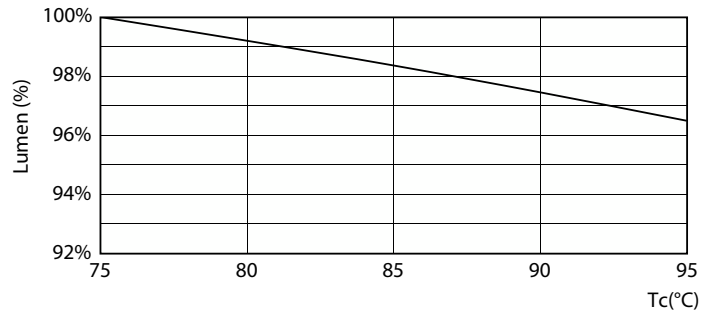


Light Distribution Diagram - MAS LEDtube 1500mm UO 36W 865 T5

## Lifetime



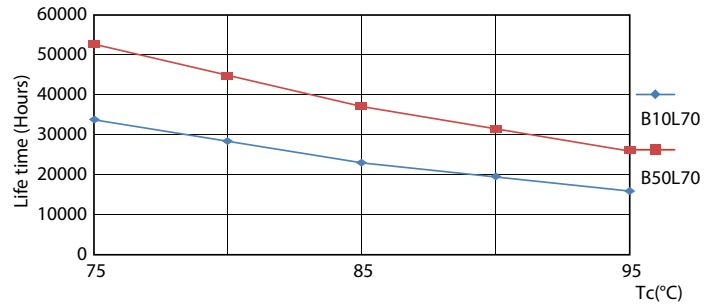
Life Expectancy Diagram



Lumen Maintenance Diagram - MAS LEDtube 1500mm UO 36W 865 T5

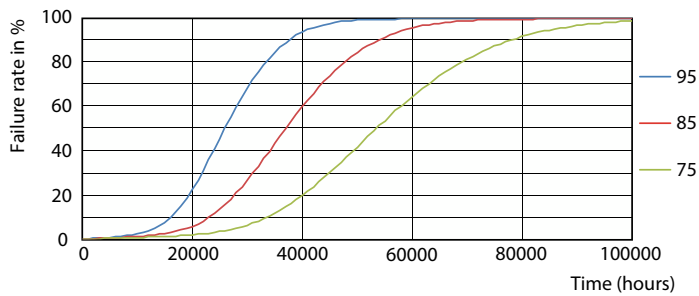
# MASTER LED tube Mains T5

## Lifetime



Lumen Maintenance Diagram - MAS LEDtube 1500mm UO 36W 865 T5

LEDtube 50K 7595 LifetimeVsTc-LED



LEDtube 50K 7595 FailureRate-LED

