



CorePro MainsFit (UL Type-B) T8

14.5T8/COR/48-830/MF20/G 10/1

The CorePro MainsFit (UL Type B) lamps are designed to be the perfect retrofit solution to move from traditional fluorescent lamps to energy saving LEDs. This ballast bypass lamp has everything needed built into the lamp with proven energy savings, long life (up to 50k hours), surge suppression and industry leading safety features. All lamps in the CorePro MainsFit family are double-ended to help simplify the installation. In addition, all lamps meet the Philips standards for light quality so that end users will be in a comfortable environment regardless of the CorePro MainsFit lamp type.

Product data

General Information	
Cap-Base	G13 [Medium Bi-Pin Fluorescent]
Nominal lifetime	50,000 hour(s)
Switching Cycle	50,000
Lighting Technology	LED
Light Technical	
Color Code	830 [CCT of 3000K]
Beam Angle (Nom)	240 degree(s)
Luminous Flux	2,000 lm
Color Designation	White (WH)
Correlated Color Temperature (Nom)	3000 K
Luminous Efficacy (rated) (Nom)	137.00 lm/W
Color Consistency	<6
Color rendering index (CRI)	80
LLMF At End Of Nominal Lifetime (Nom)	70 %

Operating and Electrical	
Line Frequency	50 to 60 Hz
Input Frequency	50 to 60 Hz
Power Consumption	14.5 W
Lamp Current (Max)	124 mA
Lamp Current (Min)	58 mA
Wattage Equivalent	32 W
Starting Time (Nom)	0.5 s
Warm-up time to 60% light	0.5 s
Power Factor (Fraction)	0.9
Voltage (Nom)	120-277 V
UL Type	Type B - bypass the ballast
Temperature	
T-Case Maximum (Nom)	70 °C

CorePro MainsFit (UL Type-B) T8

Controls and Dimming

Dimmable	Limited
----------	---------

Mechanical and Housing

Bulb Finish	Frosted
Bulb Material	Glass
Product Length	1,200 mm
Bulb Shape	T8
Net Weight (Piece)	0.215 kg

Approval and Application

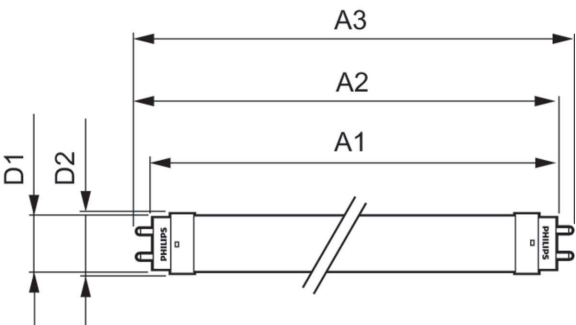
Energy Saving Product	Yes
Approval Marks	RoHS compliance UL certificate DLC compliance
Energy Consumption kWh/1000 h	- kWh

EU RoHS compliant	Yes
Ambient temperature range	-20 °C to 45 °C

Product Data

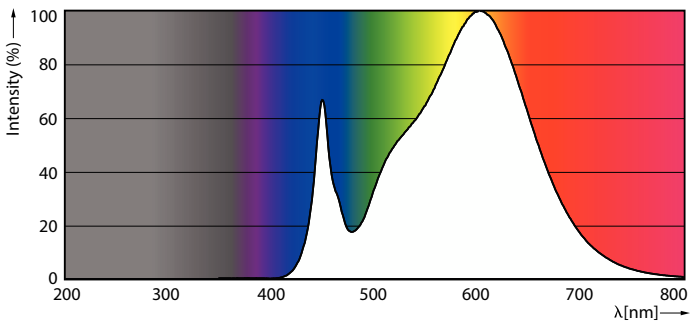
Order product name	14.5T8/COR/48-830/MF20/G 10/1
Full product name	14.5T8/COR/48-830/MF20/G 10/1
Order code	929002484404
Material Nr. (12NC)	929002484404
Numerator - Quantity Per Pack	1
EAN/UPC - Product/Case	046677563523
Numerator - Packs per outer box	10
EAN/UPC - Case	50046677563528

Dimensional drawing

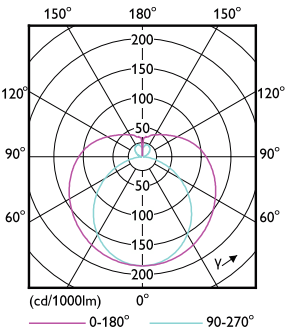


Product	D1	D2	A1	A2	A3
14.5T8/COR/48-830/MF20/G 10/1	25.7 mm	28 mm	1,198.2 mm	1,205.3 mm	1,212.4 mm

Photometric data



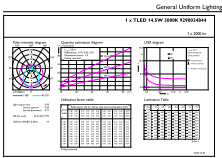
Spectral Power Distribution Colour - 14.5T8/COR/48-830/MF20/G 10/1



Light Distribution Diagram - 14.5T8/COR/48-830/MF20/G 10/1

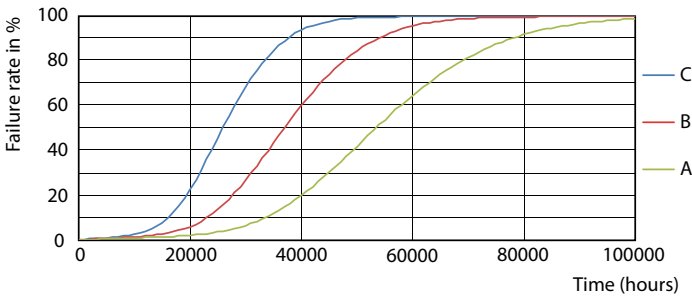
CorePro MainsFit (UL Type-B) T8

Photometric data

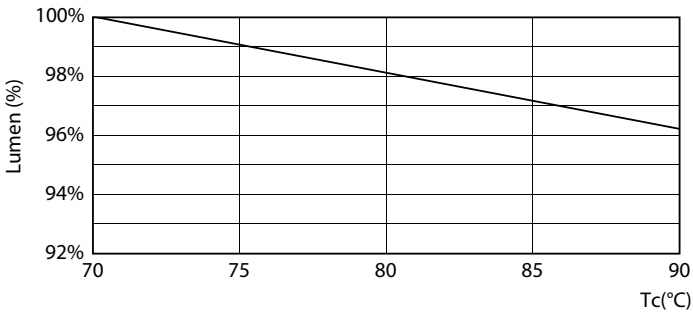


General uniform lighting - 14.5T8/COR/48-830/MF20/G 10/1

Lifetime

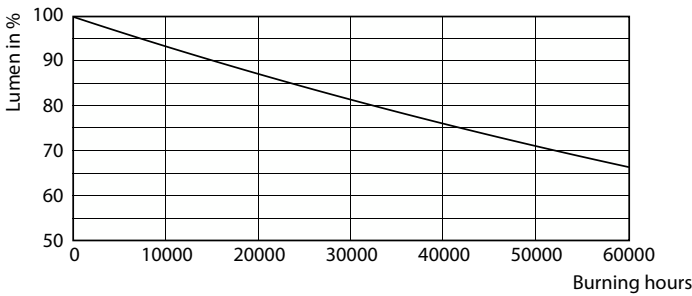


Life Expectancy Diagram



Lumen Maintenance Diagram - 14.5T8/COR/48-830/MF20/G 10/1

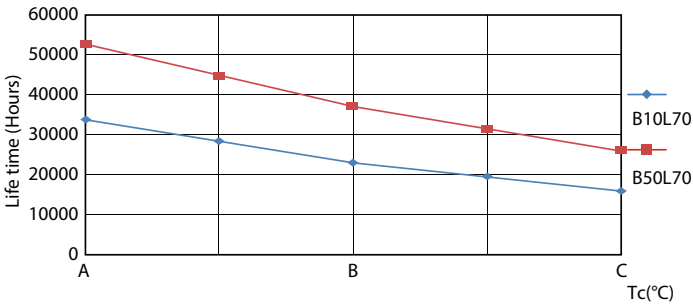
FailureRate



Lumen Maintenance Diagram - 14.5T8/COR/48-830/MF20/G 10/1

CorePro MainsFit (UL Type-B) T8

Lifetime



LifetimeVsTc

