



T8

8.5T8/COR/24-835/MF11/G/BAA 25/1

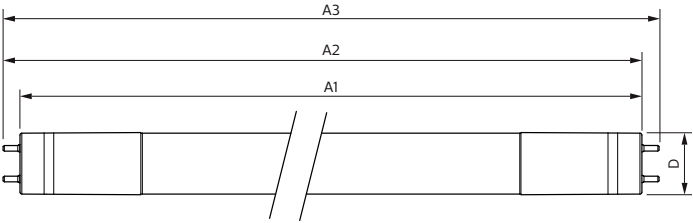
Our TLEDs are available in InstantFit (Type A / Type C) or MainsFit (Ballast bypass / Type B) versions. The InstantFit lamps work on a broad variety of ballasts and LED drivers. Only InstantFit has over 15,000 lamp & ballast combinations delivering even light output, energy savings and a long lifetime. Our MainsFit products feature a double-ended design, simplifying installation while a proprietary safety circuit minimizes a shock risk. Lamp sizes range from 2-foot to 8-foot and U-bend with a variety of lumen outputs.

Product data

General Information		Operating and Electrical	
Cap-Base	G13 [Medium Bi-Pin Fluorescent]	Line Frequency	50 to 60 Hz
Nominal lifetime	50,000 hour(s)	Input Frequency	50 to 60 Hz
Switching Cycle	50,000	Power Consumption	8.5 W
Lighting Technology	LED	Lamp Current (Max)	75 mA
Buy American Compliant Products	Yes	Lamp Current (Min)	36 mA
EU RoHS compliant	Yes	Wattage Equivalent	17 W
Light Technical		Starting Time (Nom)	0.9 s
Color Code	835 [CCT of 3500K]	Warm-up time to 60% light	0.9 s
Beam Angle (Nom)	240 degree(s)	Power Factor (Fraction)	0.9
Luminous Flux	1,100 lm	Voltage (Nom)	120-277 V
Color Designation	White (WH)	UL Type	Type B - bypass the ballast
Correlated Color Temperature (Nom)	3500 K	Temperature	
Luminous Efficacy (rated) (Nom)	129.00 lm/W	Ambient temperature range	-20 °C to 45 °C
Color Consistency	<6	T-Case Maximum (Nom)	50 °C
Color rendering index (CRI)	80	Controls and Dimming	
LLMF At End Of Nominal Lifetime (Nom)	70 %	Dimmable	No

Mechanical and Housing	
Bulb Finish	Frosted
Bulb Material	Glass
Product Length	600 mm
Bulb Shape	T8
Approval and Application	
Energy Saving Product	Yes
Approval Marks	RoHS compliance UL certificate DLC compliance
Energy Consumption kWh/1000 h	- kWh

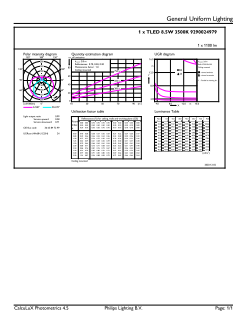
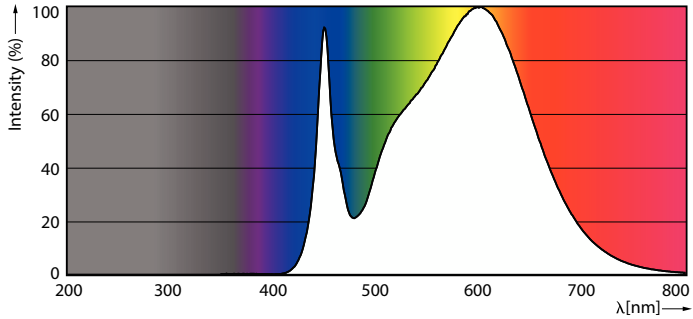
Dimensional drawing



Product Data	
Order product name	8.5T8/COR/24-835/MF11/G/BAA 25/1
Full product name	8.5T8/COR/24-835/MF11/G/BAA 25/1
Order code	929002497904
Material Nr. (12NC)	929002497904
Numerator - Quantity Per Pack	1
EAN/UPC - Product/Case	046677563752
Numerator - Packs per outer box	25
EAN/UPC - Case	50046677563757

Product	D1	D2	A1	A2	A3
8.5T8/COR/24-835/MF11/G/BAA 25/1	25.9 mm	28 mm	589.5 mm	595.7 mm	604 mm

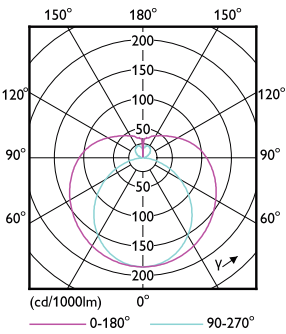
Photometric data



Spectral Power Distribution Colour - 8.5T8/COR/24-835/MF11/G/BAA 25/1

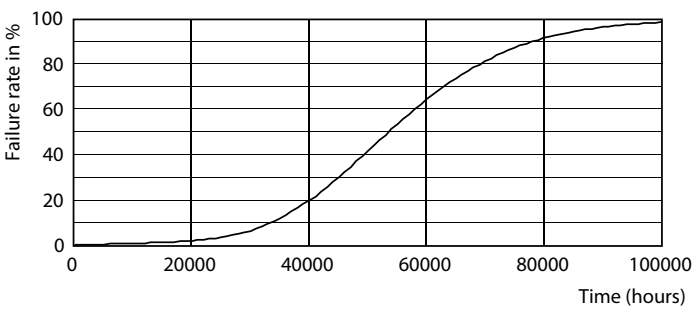
General uniform lighting - 8.5T8/COR/24-835/MF11/G/BAA 25/1

Photometric data

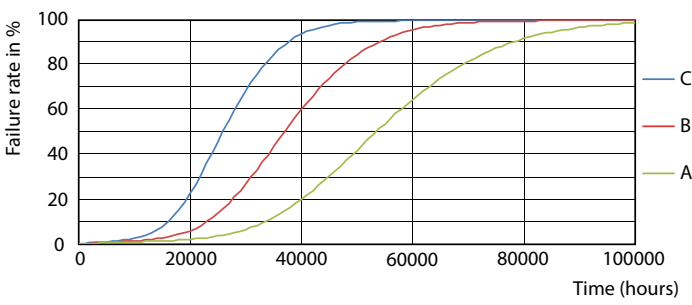


Light Distribution Diagram - 8.5T8/COR/24-835/MF11/G/BAA 25/1

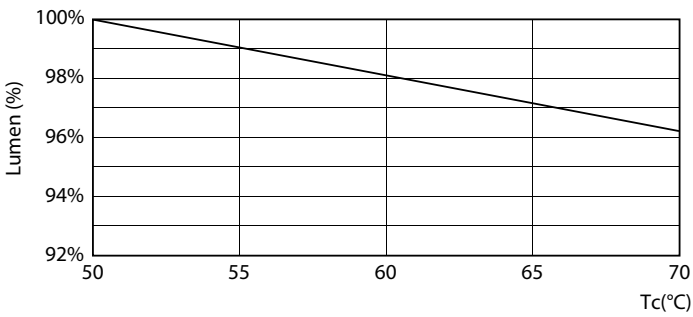
Lifetime



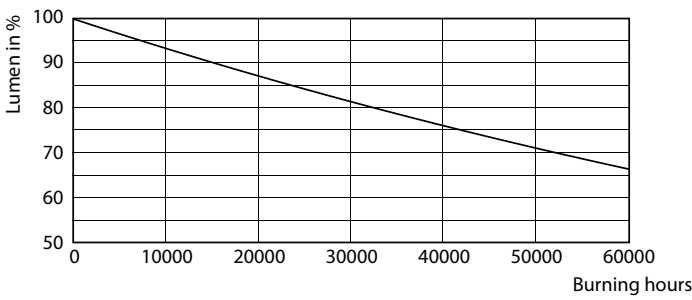
Life Expectancy Diagram - 8.5T8/COR/24-835/MF11/G/BAA 25/1



Life Expectancy Diagram - 8.5T8/COR/24-835/MF11/G/BAA 25/1



Lumen Maintenance Diagram - 8.5T8/COR/24-835/MF11/G/BAA 25/1



Lumen Maintenance Diagram - 8.5T8/COR/24-835/MF11/G/BAA 25/1

T8

Lifetime

Life Expectancy Diagram - 8.5T8/COR/24-835/MF11/G/BAA 25/1

