



T8

8.5T8/COR/24-840/MF11/G/BAA 25/1

Our TLEDs are available in InstantFit (Type A / Type C) or MainsFit (Ballast bypass / Type B) versions. The InstantFit lamps work on a broad variety of ballasts and LED drivers. Only InstantFit has over 15,000 lamp & ballast combinations delivering even light output, energy savings and a long lifetime. Our MainsFit products feature a double-ended design, simplifying installation while a proprietary safety circuit minimizes a shock risk. Lamp sizes range from 2-foot to 8-foot and U-bend with a variety of lumen outputs.

Product data

General Information	
Cap-Base	G13 [Medium Bi-Pin Fluorescent]
Nominal lifetime	50,000 hour(s)
Switching Cycle	50,000
Lighting Technology	LED
Buy American Compliant Products	Yes
Light Technical	
Color Code	840 [CCT of 4000K]
Beam Angle (Nom)	240 degree(s)
Luminous Flux	1,150 lm
Luminous Efficacy (rated) (Nom)	135.00 lm/W
Color Designation	Cool White (CW)
Correlated Color Temperature (Nom)	4000 K
Color Consistency	<6
Color rendering index (CRI)	80
LLMF At End Of Nominal Lifetime (Nom)	70 %
Operating and Electrical	
Line Frequency	50 to 60 Hz

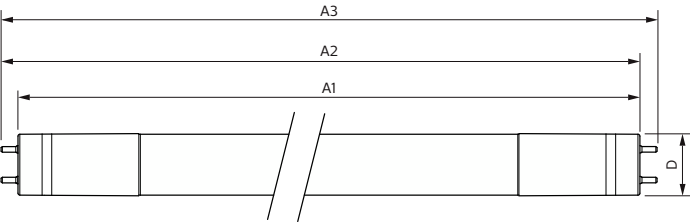
Input Frequency	50 to 60 Hz
Power Consumption	8.5 W
Lamp Current (Max)	75 mA
Lamp Current (Min)	36 mA
Wattage Equivalent	17 W
Starting Time (Nom)	0.9 s
Warm-up time to 60% light	0.9 s
Power Factor (Fraction)	0.9
Voltage (Nom)	120-277 V
UL Type	Type B - bypass the ballast
Temperature	
Ambient temperature range	-20 °C to 45 °C
T-Case Maximum (Nom)	50 °C
Controls and Dimming	
Dimmable	No
Mechanical and Housing	
Bulb Finish	Frosted

Bulb Material	Glass
Product Length	600 mm
Bulb Shape	T8
Approval and Application	
Energy Saving Product	Yes
Approval Marks	RoHS compliance UL certificate DLC compliance
Energy Consumption kWh/1000 h	- kWh
EU RoHS compliant	Yes

Product Data	
Order product name	8.5T8/COR/24-840/MF11/G/BAA 25/1

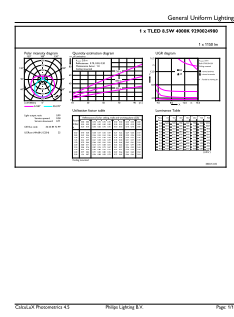
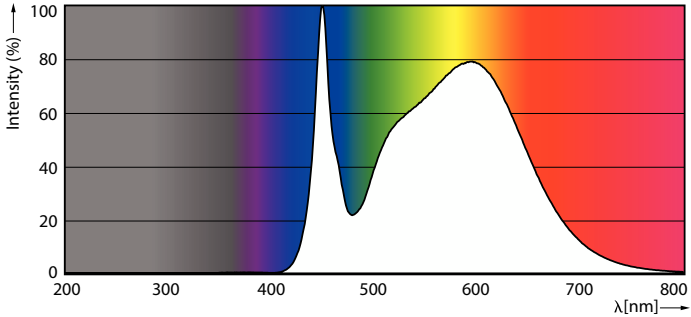
Full product name	8.5T8/COR/24-840/MF11/G/BAA 25/1
Order code	929002498004
Material Nr. (12NC)	929002498004
Numerator - Quantity Per Pack	1
Net Weight (Piece)	0.113 kg
EAN/UPC - Product/Case	046677563769
Numerator - Packs per outer box	25
EAN/UPC - Case	50046677563764

Dimensional drawing



Product	D1	D2	A1	A2	A3
8.5T8/COR/24-840/MF11/G/BAA 25/1	25.9 mm	28 mm	589.5 mm	595.7 mm	604 mm

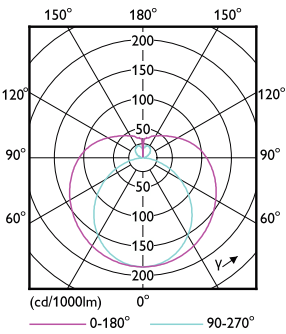
Photometric data



Spectral Power Distribution Colour - 8.5T8/COR/24-840/MF11/G/BAA 25/1

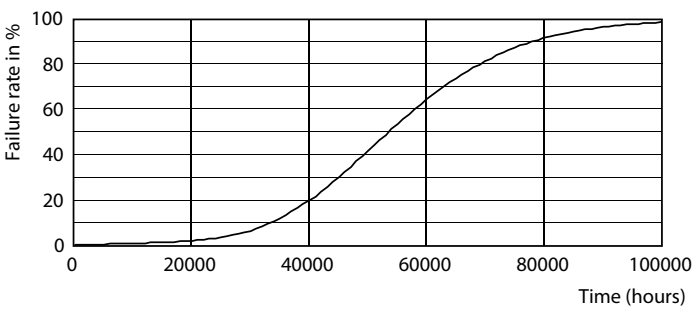
General uniform lighting - 8.5T8/COR/24-840/MF11/G/BAA 25/1

Photometric data

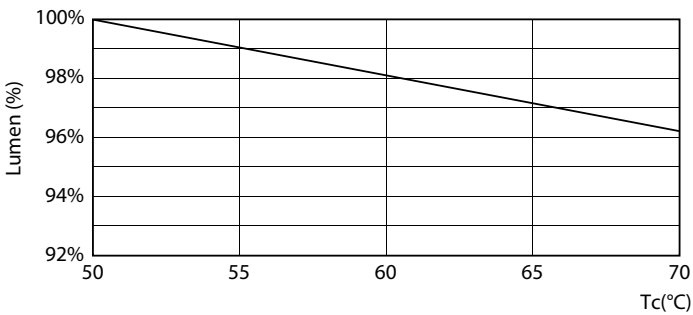


Light Distribution Diagram - 8.5T8/COR/24-840/MF11/G/BAA 25/1

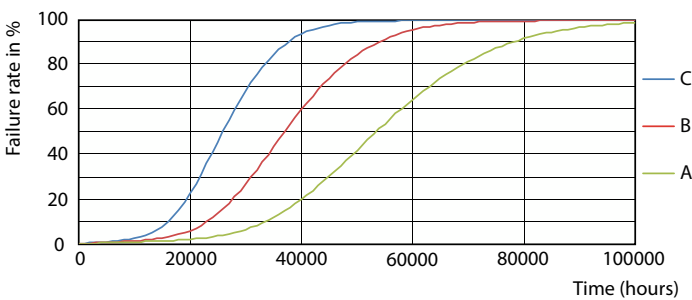
Lifetime



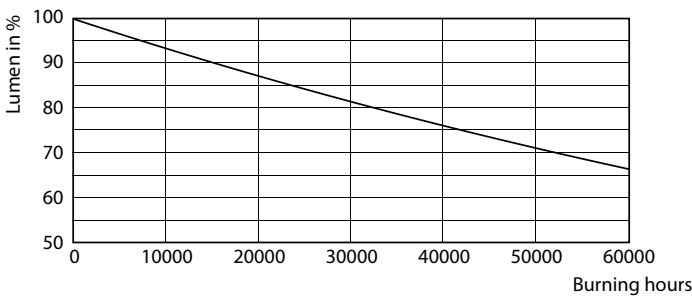
Life Expectancy Diagram



Lumen Maintenance Diagram - 8.5T8/COR/24-840/MF11/G/BAA 25/1

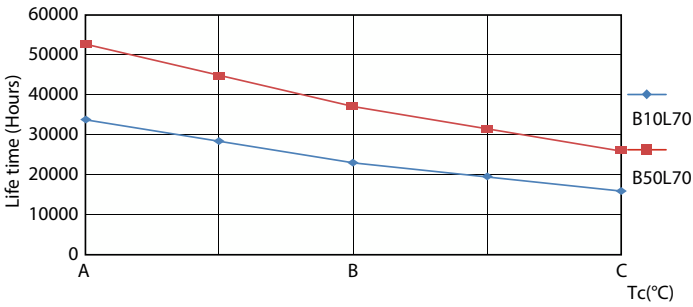


FailureRate



Lumen Maintenance Diagram - 8.5T8/COR/24-840/MF11/G/BAA 25/1

Lifetime



LifetimeVsTc

