



# MASTER VALUE LEDspot MV

## MASTER LED spot VLE D 3.7–35W GU10 927 60D

Delivering a warm, halogen-like accent beam, the MASTER VALUE is a perfect fit for spot lighting. Thanks to its high CRI, it achieves more natural colours, creating cosy and comfortable ambience for residential and hospitality projects, and emphasising the beauty of merchandise in retail. These LED spots MV GU10 have the familiar look and feel of spot lamps, keeping the classic beauty of glass spots and adding the strong performance of LED technology. The dimming function enables you to create the atmosphere you desire, and it works with broad selection of dimmers. The MASTER VALUE also offers more energy savings than normal LED spots.

### Warnings and Safety

- Operating temperature range is between -20° C and 45° C ambient
- Only to apply in dry or damp locations and most of open fixtures with lamp-holders that offer sufficient space (10 mm free air space)
- Not intended for use with emergency light fixtures or exit lights

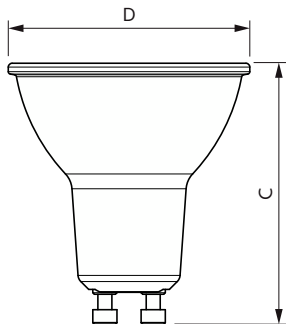
### Product data

| General Information        |                    |  |                 |
|----------------------------|--------------------|--|-----------------|
| Cap base                   | GU10               | Luminous intensity (nom.)                    | 300 cd          |
| Nominal lifetime           | 25,000 h           | Colour designation                           | Warm White (WW) |
| Switching Cycle            | 50,000             | Correlated Colour Temperature (Nom)          | 2700 K          |
| Lighting Technology        | LED                | Luminous efficacy (rated) (nom.)             | 72.00 lm/W      |
| Flux measurement reference | Narrow Cone        | Colour consistency                           | <6              |
|                            |                    | Colour rendering index (CRI)                 | 90              |
|                            |                    | LLMF at end of nominal lifetime (nom.)       | 70 %            |
|                            |                    | Luminous flux in 90° cone (rated)            | 270 lm          |
|                            |                    | Photobiological safety according to EN 62471 | RG1             |
| Light Technical            |                    |  |                 |
| Colour Code                | 927 [CCT of 2700K] |  |                 |
| Beam angle (nom.)          | 60 degree(s)       |  |                 |
| Luminous Flux              | 270 lm             |  |                 |

# MASTER VALUE LEDspot MV

|                                    |                            |
|------------------------------------|----------------------------|
| <b>Operating and Electrical</b>    |                            |
| Line Frequency                     | 50 to 60 Hz                |
| Input frequency                    | 50 to 60 Hz                |
| Power Consumption                  | 3.7 W                      |
| Lamp current (nom.)                | 18 mA                      |
| Wattage equivalent                 | 35 W                       |
| Starting time (nom.)               | 0.5 s                      |
| Warm-up time to 60% light          | 0.5 s                      |
| Power Factor (Fraction)            | 0.9                        |
| Voltage (nom.)                     | 220-240 V                  |
| <b>Temperature</b>                 |                            |
| T-Case maximum (nom.)              | 70 °C                      |
| <b>Controls and Dimming</b>        |                            |
| Dimmable                           | Only with specific dimmers |
| <b>Mechanical and Housing</b>      |                            |
| Bulb shape                         | PAR16                      |
| Net Weight (Piece)                 | 0.038 kg                   |
| <b>Approval and Application</b>    |                            |
| Energy Efficiency Class            | F                          |
| Suitable for accent lighting       | Yes                        |
| Energy consumption kWh/1,000 hours | 4 kWh                      |

## Dimensional drawing

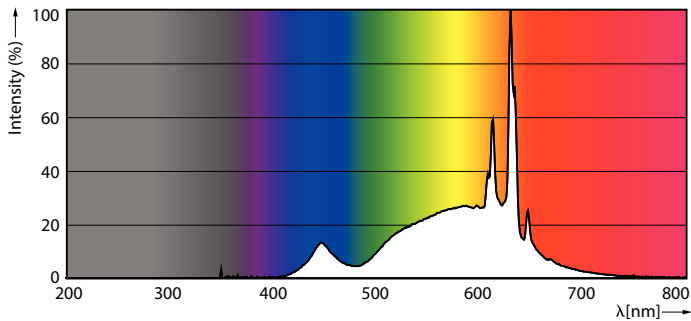


|                                     |  |
|-------------------------------------|--|
| EPREL Registration Number           | 1825218                                    |
| CE mark                             | Yes  |
| EU RoHS compliant                   | Yes  |
| EyeComfort                          | Yes  |
| Flickering value (PstLM)            | 1  |
| Stroboscopic effect                 | 0.6  |
| <b>Application Conditions</b>       |  |
| Can it be used in closed luminaires | No   |
| <b>Product Data</b>                 |  |
| Order product name                  | MAS LED spot VLE D 3.7-35W GU10 927 60D    |
| Full product name                   | MASTER LED spot VLE D 3.7-35W GU10 927 60D |
| Full EOC                            | 871951431226500                            |
| Order code                          | 31226500                                   |
| Material no. (12 NC)                | 929002979802                               |
| Numerator – quantity per pack       | 1  |
| EAN/UPC – Product/Case              | 8719514312265                              |
| Numerator – packs per outer box     | 10   |
| EAN/UPC – Case                      | 8719514312272                              |

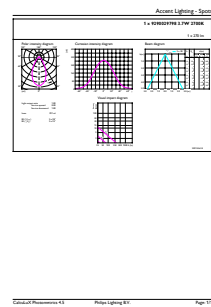
| Product                                 | D     | C     |
|---|-------|-------|
| MAS LED spot VLE D 3.7-35W GU10 927 60D | 50 mm | 54 mm |

MASTER VALUE LEDspot MV

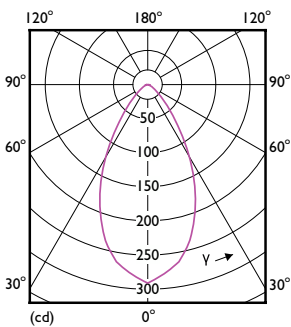
Photometric data



Spectral Power Distribution Colour - MAS LED spot VLE D 3.7-35W GU10 927 60D

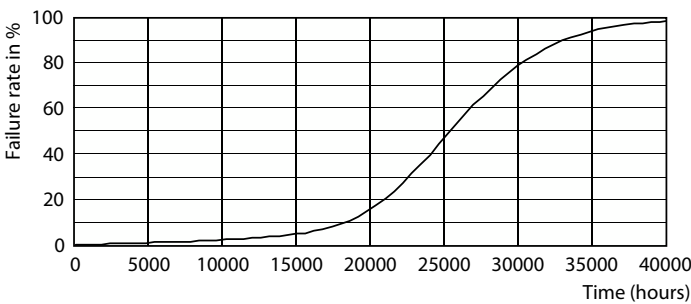


Accent Lighting Spots - MAS LED spot VLE D 3.7-35W GU10 927 60D

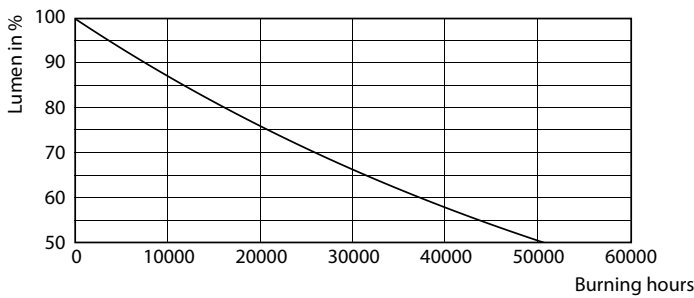


Light Distribution Diagram - MAS LED spot VLE D 3.7-35W GU10 927 60D

Lifetime



Life Expectancy Diagram



Lumen Maintenance Diagram - MAS LED spot VLE D 3.7-35W GU10 927 60D

## MASTER VALUE LEDspot MV

