



CorePro LEDtube EM/ Mains



CorePro LEDtube 600mm 8W 840 T8

CorePro, LEDtube, T8, EM/Mains, 600 mm, 8 W, 18W TL-D, 4000 K, 800 lm, CRI 80, 50000 h

The CorePro LEDtube is an affordable LED solution suitable for replacing T8 fluorescent lamps. The product provides a natural lighting effect for use in general lighting applications, as well as instant energy savings – an environmentally friendly solution.

Warnings and Safety

• -

Product data

| General Information | | Colour consistency | |
|-------------------------------------|--------------------|--|-------------|
| Cap base | G13 | Colour consistency | <6 |
| Nominal lifetime | 50,000 h | Colour rendering index (CRI) | 80 |
| Switching Cycle | 200,000 | LLMF at end of nominal lifetime (nom.) | 70 % |
| Lighting Technology | LEDtube | Photobiological safety according to EN 62471 | RG0 |
| Flux measurement reference | Sphere | Operating and Electrical | |
| Light Technical | | Line Frequency | 50 to 60 Hz |
| Colour Code | 840 [CCT of 4000K] | Input frequency | 50 to 60 Hz |
| Beam angle (nom.) | 240 degree(s) | Power Consumption | 8 W |
| Luminous Flux | 800 lm | Lamp current (nom.) | 46 mA |
| Colour designation | Cool White (CW) | Starting time (nom.) | 0.5 s |
| Correlated Colour Temperature (Nom) | 4000 K | Warm-up time to 60% light | 0.5 s |
| Luminous efficacy (rated) (nom.) | 100 lm/W | Power Factor (Fraction) | 0.9 |
| | | Voltage (nom.) | 220-240 V |

CorePro LEDtube EM/Mains

| | |
|--|----------|
| LED alternative to fluorescent lamp power | 18W TL-D |
| Inrush current at mains | 4.27 |
| Max. lamp no. on MCB B type 10A – Mains | 119 |
| Max. lamp no. on MCB B type 10A – EM ballast without Compensation Capacitor. | 154 |
| Max. lamp no. on MCB B type 10A – EM ballast with Compensation Capacitor. | 24 |
| Max. lamp no. on MCB B type 16A – Mains | 191 |
| Max. lamp no. on MCB B type 16A – EM ballast without Compensation Capacitor. | 246 |
| Max. lamp no. on MCB B type 16A – EM ballast with Compensation Capacitor. | 39 |
| Ballast Compatibility | EM/Mains |

Temperature

| | |
|-----------------------|-------|
| T-Case maximum (nom.) | 50 °C |
|-----------------------|-------|

Controls and Dimming

| | |
|----------|----|
| Dimmable | No |
|----------|----|

Mechanical and Housing

| | |
|--------------------|----------|
| Lamp Finish | Frosted |
| Bulb material | Glass |
| Product length | 600 mm |
| Bulb shape | T8 |
| Net Weight (Piece) | 0.220 kg |

Approval and Application

| | |
|-------------------------|---|
| Energy Efficiency Class | F |
|-------------------------|---|

| | |
|------------------------------------|---|
| Energy-saving product | Yes |
| Approval marks | RoHS compliance CE marking KEMA Keur certificate |
| Energy consumption kWh/1,000 hours | 8 kWh |
| EPREL Registration Number | 1827696 |
| CE mark | Yes |
| EU RoHS compliant | Yes |
| Flickering value (PstLM) | 1 |
| Stroboscopic effect | 0.4 |
| Ambient temperature range | -20 to +45 °C |

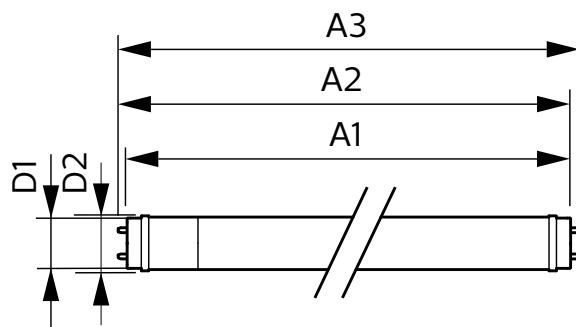
Application Conditions

| | |
|-------------------------------------|-----|
| Can it be used in closed luminaires | Yes |
|-------------------------------------|-----|

Product Data

| | |
|---------------------------------|---------------------------------|
| Order product name | CorePro LEDtube 600mm 8W 840 T8 |
| Full product name | CorePro LEDtube 600mm 8W 840 T8 |
| Full EOC | 871951432531900 |
| Order code | 32531900 |
| Material no. (12 NC) | 929003022102 |
| Numerator – quantity per pack | 1 |
| EAN/UPC – Product/Case | 8719514325319 |
| Numerator – packs per outer box | 10 |
| EAN/UPC – Case | 8719514325326 |

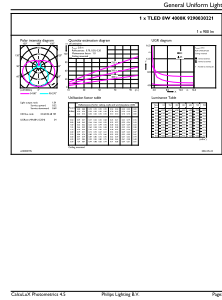
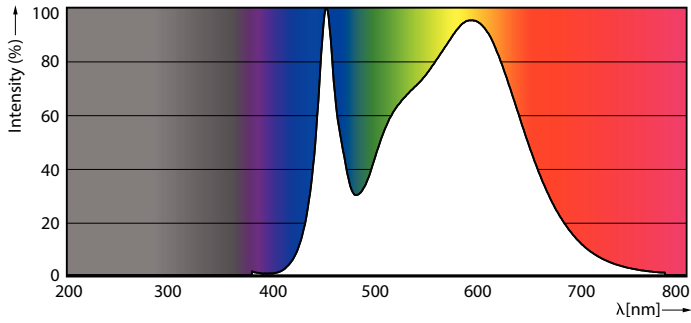
Dimensional drawing



| Product | D1 | D2 | A1 | A2 | A3 |
|---------------------------------|---------|-------|----------|----------|----------|
| CorePro LEDtube 600mm 8W 840 T8 | 25.7 mm | 28 mm | 588.5 mm | 595.5 mm | 602.5 mm |

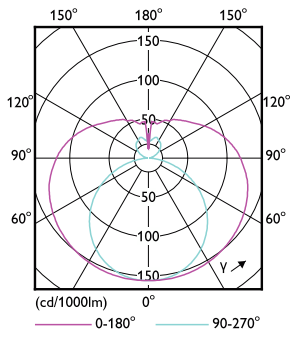
CorePro LEDtube EM/Mains

Photometric data



Spectral Power Distribution Colour - CorePro LEDtube 600mm 8W 840 T8

General uniform lighting - CorePro LEDtube 600mm 8W 840 T8

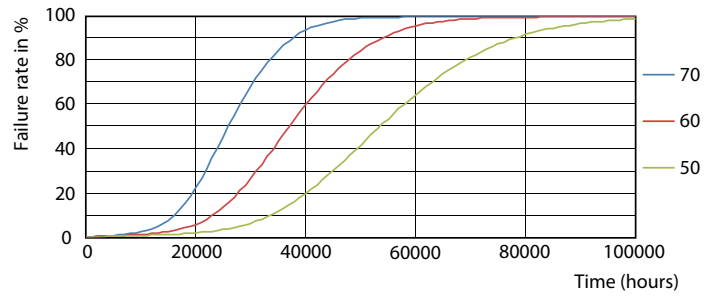


Light Distribution Diagram - CorePro LEDtube 600mm 8W 840 T8

Lifetime



Life Expectancy Diagram



FailureRate

CorePro LEDtube EM/Mains

Lifetime



LifetimeVsTc

Lumen Maintenance Diagram - CorePro LEDtube 600mm 8W 840 T8

