



CorePro LEDtube EM/ Mains



CorePro LEDtube 1500mm 20W 865 T8

CorePro, LEDtube, T8, EM/Mains, 1500 mm, 20 W, 58W TL-D, 6500 K, 2200 lm, CRI 80, 50000 h

The CorePro LEDtube is an affordable LED solution suitable for replacing T8 fluorescent lamps. The product provides a natural lighting effect for use in general lighting applications, as well as instant energy savings – an environmentally friendly solution.

Warnings and Safety

• -

Product data

General Information		Colour consistency	
Cap base	G13 [Medium Bi-Pin Fluorescent]	Colour consistency	<6
Nominal lifetime	50,000 h	Colour rendering index (CRI)	80
Switching Cycle	200,000	LLMF at end of nominal lifetime (nom.)	70 %
Lighting Technology	LEDtube	Photobiological safety according to EN 62471	RG0
Flux measurement reference	Sphere	Operating and Electrical	
Light Technical		Line Frequency	50 to 60 Hz
Colour Code	865 [CCT of 6500K]	Input frequency	50 to 60 Hz
Beam angle (nom.)	240 degree(s)	Power Consumption	20 W
Luminous Flux	2,200 lm	Lamp current (nom.)	105 mA
Colour designation	Cool Daylight	Starting time (nom.)	0.5 s
Correlated Colour Temperature (Nom)	6500 K	Warm-up time to 60% light	0.5 s
Luminous efficacy (rated) (nom.)	110 lm/W	Power Factor (Fraction)	0.9
		Voltage (nom.)	220-240 V

CorePro LEDtube EM/Mains

LED alternative to fluorescent lamp power	58W TL-D
Inrush current at mains	8.7
Max. lamp no. on MCB B type 10A – Mains	34
Max. lamp no. on MCB B type 10A – EM ballast without Compensation Capacitor.	54
Max. lamp no. on MCB B type 10A – EM ballast with Compensation Capacitor.	10
Max. lamp no. on MCB B type 16A – Mains	55
Max. lamp no. on MCB B type 16A – EM ballast without Compensation Capacitor.	87
Max. lamp no. on MCB B type 16A – EM ballast with Compensation Capacitor.	17
Ballast Compatibility	EM/Mains

Temperature

T-Case maximum (nom.)	60 °C
-----------------------	-------

Controls and Dimming

Dimmable	No
----------	----

Mechanical and Housing

Lamp Finish	Frosted
Bulb material	Glass
Product length	1,500 mm
Bulb shape	T8
Net Weight (Piece)	0.220 kg

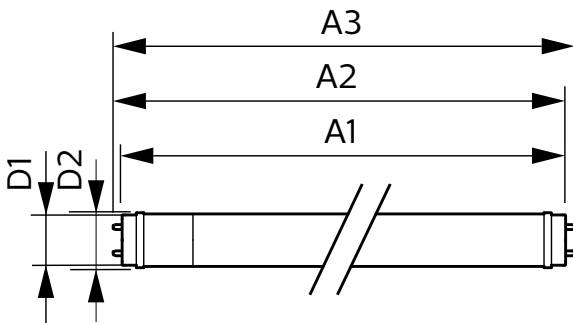
Approval and Application

Energy Efficiency Class	E
Energy-saving product	Yes
Approval marks	RoHS compliance CE marking KEMA Keur certificate
Energy consumption kWh/1,000 hours	20 kWh
EPREL Registration Number	1384718
CE mark	Yes
EU RoHS compliant	Yes
Flickering value (PstLM)	1
Stroboscopic effect	0.9
Ambient temperature range	-20°C to 45°C

Product Data

Order product name	CorePro LEDtube 1500mm 20W 865 T8
Full product name	CorePro LEDtube 1500mm 20W 865 T8
Full EOC	871951432541800
Order code	32541800
Material no. (12 NC)	929003022602
Numerator – quantity per pack	1
EAN/UPC – Product/Case	8719514325418
Numerator – packs per outer box	10
EAN/UPC – Case	8719514325425

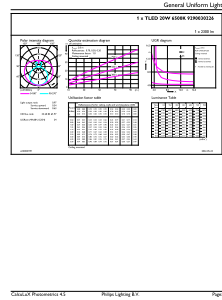
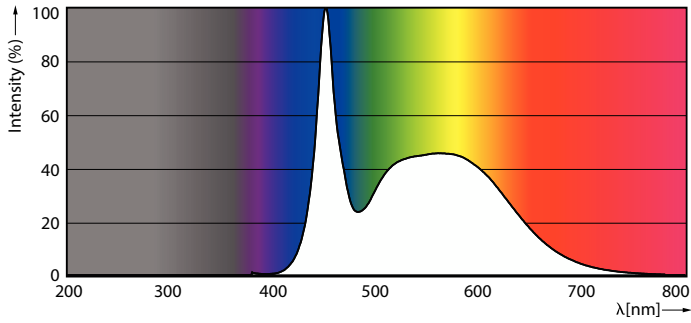
Dimensional drawing



Product	D1	D2	A1	A2	A3
CorePro LEDtube 1500mm 20W 865 T8	25.7 mm	28 mm	1,500 mm	1,507.1 mm	1,514.2 mm

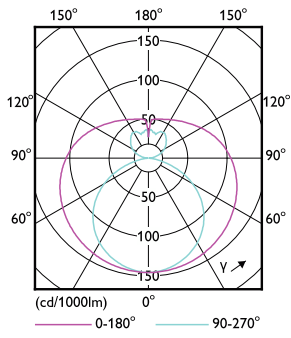
CorePro LEDtube EM/Mains

Photometric data



Spectral Power Distribution Colour - CorePro LEDtube 1500mm 20W 865 T8

General uniform lighting - CorePro LEDtube 1500mm 20W 865 T8

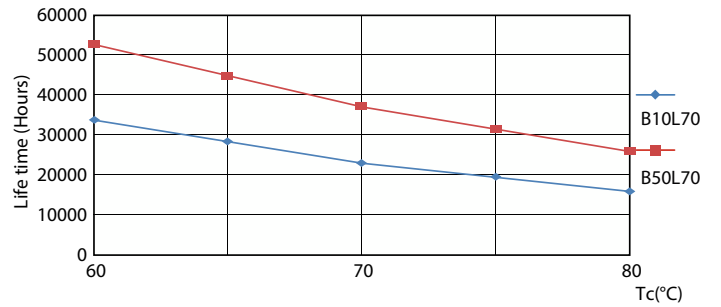


Light Distribution Diagram - CorePro LEDtube 1500mm 20W 865 T8

Lifetime



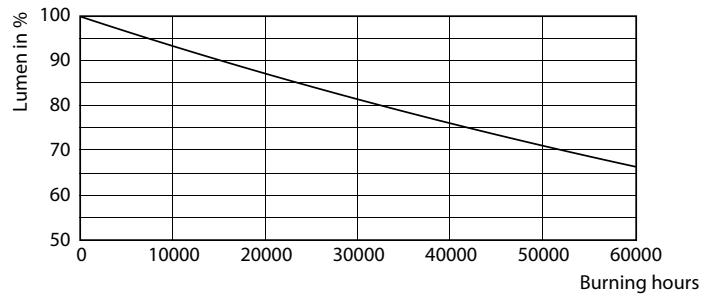
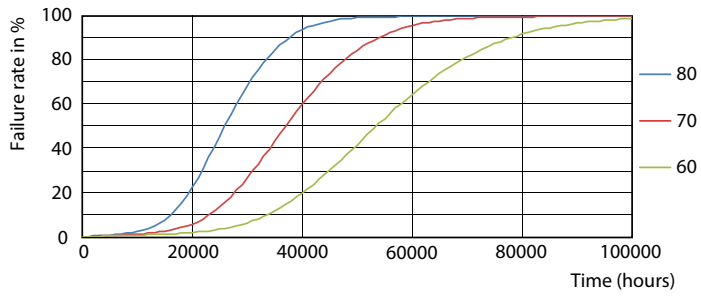
Life Expectancy Diagram



LifetimeVsTc

CorePro LEDtube EM/Mains

Lifetime



FailureRate

Lumen Maintenance Diagram - CorePro LEDtube 1500mm 20W 865 T8

