



CorePro MainsFit (UL Type-B) T8

42T8HO/COR/96-850/MF54/G/FA8 10/1

The CorePro MainsFit (UL Type B) lamps are designed to be the perfect retrofit solution to move from traditional fluorescent lamps to energy saving LEDs. This ballast bypass lamp has everything needed built into the lamp with proven energy savings, long life (up to 50k hours), surge suppression and industry leading safety features. All lamps in the CorePro MainsFit family are double-ended to help simplify the installation. In addition, all lamps meet the Philips standards for light quality so that end users will be in a comfortable environment regardless of the CorePro MainsFit lamp type.

Product data

General Information	
Cap-Base	FA8
Nominal lifetime	50,000 hour(s)
Switching Cycle	50,000
Lighting Technology	LED
Light Technical	
Color Code	850 [CCT of 5000K]
Beam Angle (Nom)	240 degree(s)
Luminous Flux	5,400 lm
Color Designation	Daylight
Correlated Color Temperature (Nom)	5000 K
Luminous Efficacy (rated) (Nom)	128.00 lm/W
Color Consistency	<5
Color rendering index (CRI)	80
LLMF At End Of Nominal Lifetime (Nom)	70 %

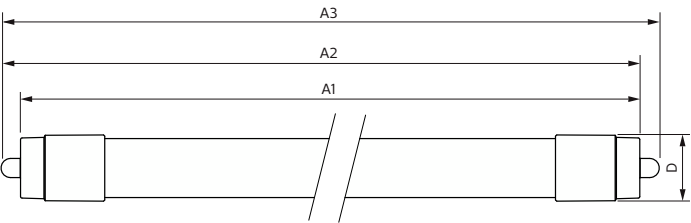
Operating and Electrical	
Line Frequency	50 to 60 Hz
Input Frequency	50 to 60 Hz
Power Consumption	42 W
Lamp Current (Max)	400 mA
Lamp Current (Min)	180 mA
Wattage Equivalent	75 W
Starting Time (Nom)	0.5 s
Warm-up time to 60% light	0.5 s
Power Factor (Fraction)	0.9
Voltage (Nom)	120-277 V
UL Type	UL Type B
Temperature	
T-Case Maximum (Nom)	55 °C

CorePro MainsFit (UL Type-B) T8

Controls and Dimming	
Dimmable	Limited
Mechanical and Housing	
Bulb Finish	Frosted
Bulb Material	Glass
Product Length	2,400 mm
Bulb Shape	T8
Net Weight (Piece)	0.400 kg
Approval and Application	
Energy Saving Product	Yes
Approval Marks	RoHS compliance UL certificate DLC compliance
EU RoHS compliant	Yes
Ambient temperature range	-20 °C to 45 °C

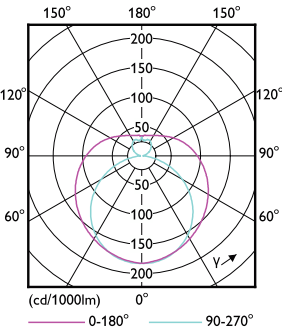
Application Conditions	
can it be used in closed luminaires	Yes
Product Data	
Order product name	42T8HO/COR/96-850/MF54/G/FA8 10/1
Full product name	42T8HO/COR/96-850/MF54/G/FA8 10/1
Order code	929003099504
Material Nr. (12NC)	929003099504
Numerator - Quantity Per Pack	1
EAN/UPC - Product/Case	046677575144
Numerator - Packs per outer box	10
EAN/UPC - Case	50046677575149

Dimensional drawing

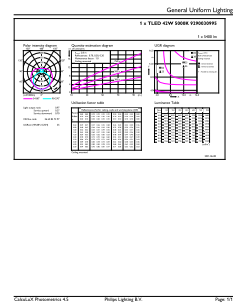


Product	D2	A1	A2	A3
42T8HO/COR/96-850/MF54/G/FA8 10/1	27.9 mm	2,369.8 mm	2,378.7 mm	2,387.8 mm

Photometric data



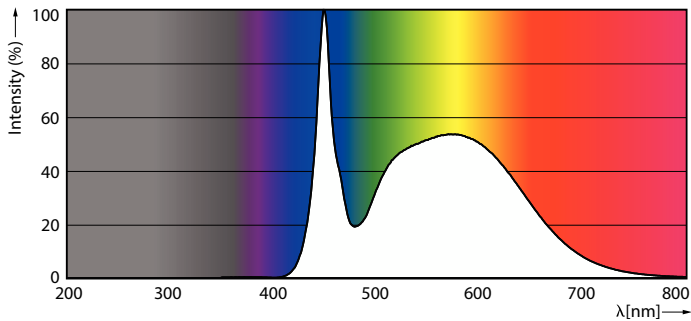
Light Distribution Diagram - 42T8HO/COR/96-850/MF54/G/FA8 10/1



General uniform lighting - 42T8HO/COR/96-850/MF54/G/FA8 10/1

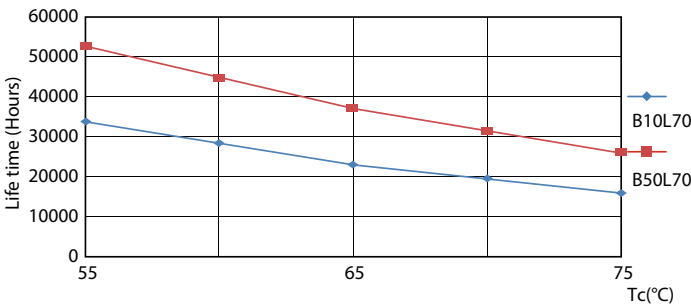
CorePro MainsFit (UL Type-B) T8

Photometric data

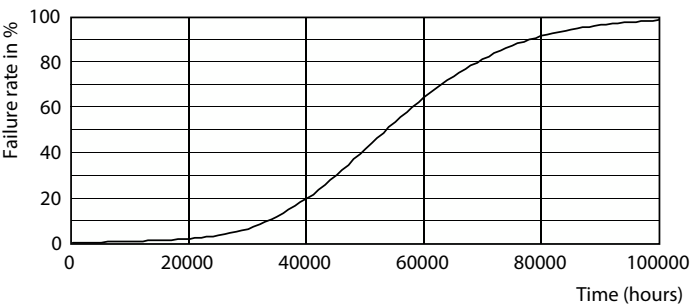


Spectral Power Distribution Colour - 42T8HO/COR/96-850/MF54/G/FA8 10/1

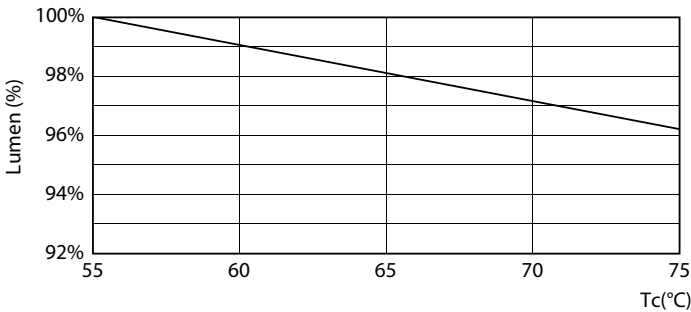
Lifetime



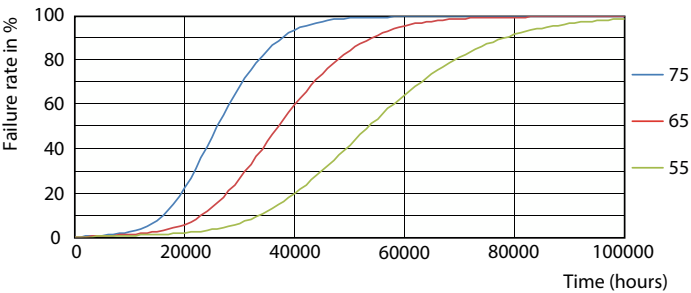
LEDtube COR 8ft 42W 50K LifetimeVsTc-LED



Life Expectancy Diagram



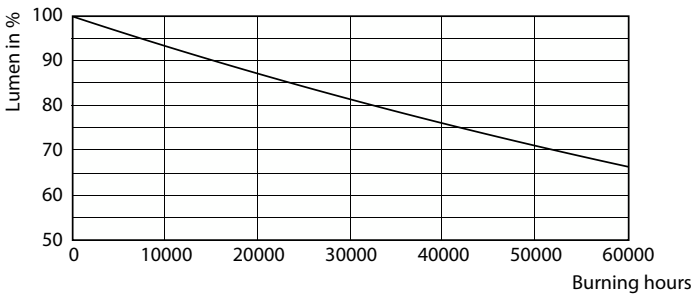
Lumen Maintenance Diagram - 42T8HO/COR/96-850/MF54/G/FA8 10/1



LEDtube COR 8ft 42W 50K FailureRate-LED

CorePro MainsFit (UL Type-B) T8

Lifetime



Lumen Maintenance Diagram - 42T8HO/COR/96-850/MF54/G/FA8 10/1

