



MainsFit (UL Type-B) T5

10T5HE/COR/34-835/MF13/G 25/1

The MainsFit (UL Type-B) lamps are designed to be the perfect retrofit solution to move from traditional fluorescent lamps to energy saving LEDs. This ballast bypass lamp has everything needed built into the lamp with proven energy savings, long life, surge suppression and industry leading safety features. All lamps in the MainsFit family are double-ended to help simplify the installation. In addition, all lamps meet the Philips standards for light quality so that end users will be in a comfortable environment regardless of the MainsFit lamp type.

Product data

General Information	
Cap-Base	G5
Nominal lifetime	50,000 hour(s)
Switching Cycle	50,000
Lighting Technology	LED
Light Technical	
Color Code	835 [CCT of 3500K]
Beam Angle (Nom)	200 degree(s)
Luminous Flux	1,300 lm
Color Designation	White (WH)
Correlated Color Temperature (Nom)	3500 K
Luminous Efficacy (rated) (Nom)	130.00 lm/W
Color Consistency	<6
Color rendering index (CRI)	80
LLMF At End Of Nominal Lifetime (Nom)	70 %

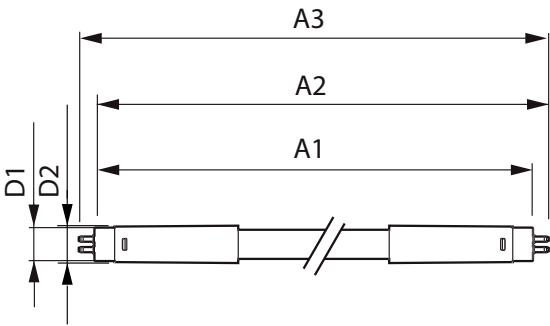
Operating and Electrical	
Line Frequency	50 to 60 Hz
Input Frequency	50 to 60 Hz
Power Consumption	10 W
Lamp Current (Max)	105 mA
Lamp Current (Min)	40 mA
Wattage Equivalent	21 W
Starting Time (Nom)	0.5 s
Warm-up time to 60% light	0.5 s
Power Factor (Fraction)	0.9
Voltage (Nom)	120-277 V
UL Type	UL Type B
Temperature	
T-Case Maximum (Nom)	70 °C

MainsFit (UL Type-B) T5

Controls and Dimming	
Dimmable	Limited
Mechanical and Housing	
Bulb Finish	Frosted
Bulb Material	Glass
Product Length	900 mm
Bulb Shape	T5
Net Weight (Piece)	0.125 kg
Approval and Application	
Energy Saving Product	Yes
Approval Marks	RoHS compliance UL certificate
EU RoHS compliant	Yes
Ambient temperature range	-20 °C to 45 °C

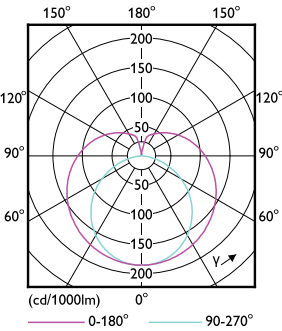
Application Conditions	
can it be used in closed luminaires	Yes
Product Data	
Order product name	10T5HE/COR/34-835/MF13/G 25/1
Full product name	10T5HE/COR/34-835/MF13/G 25/1
Order code	929003123004
Material Nr. (12NC)	929003123004
Numerator - Quantity Per Pack	1
EAN/UPC - Product/Case	046677576172
Numerator - Packs per outer box	25
EAN/UPC - Case	50046677576177

Dimensional drawing

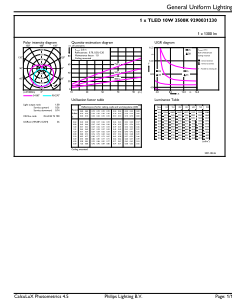


Product	D1	D2	A1	A2	A3
10T5HE/COR/34-835/MF13/G 25/1	15.3 mm	18.2 mm	849 mm	854.9 mm	863.2 mm

Photometric data



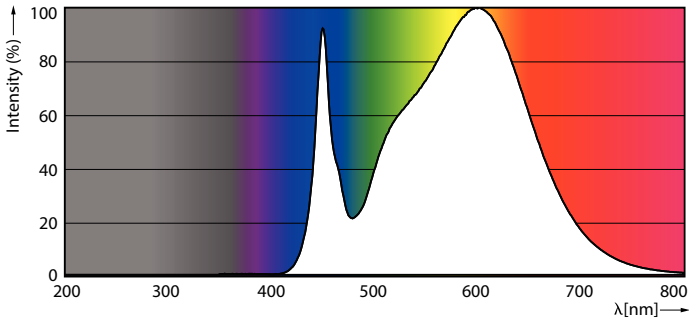
Light Distribution Diagram - 10T5HE/COR/34-835/MF13/G 25/1



General uniform lighting - 10T5HE/COR/34-835/MF13/G 25/1

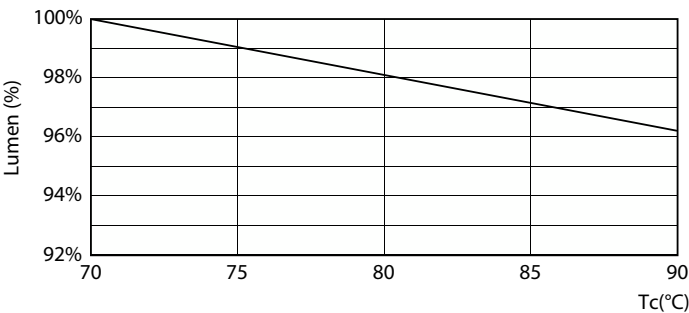
MainsFit (UL Type-B) T5

Photometric data

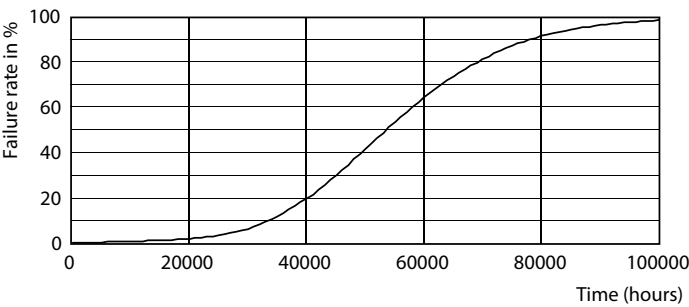


Spectral Power Distribution Colour - 10T5HE/COR/34-835/MF13/G 25/1

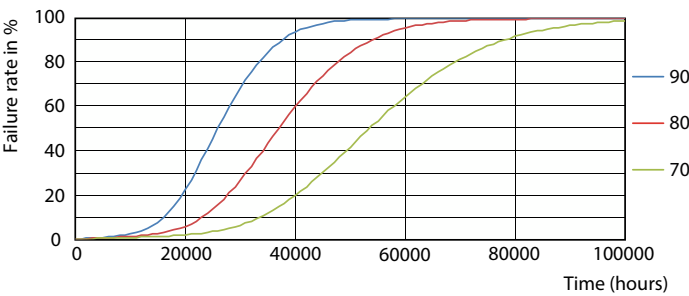
Lifetime



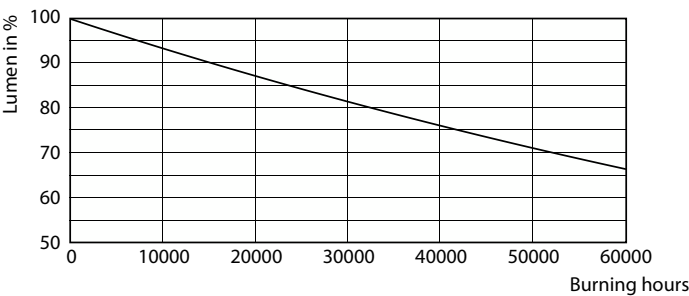
Lumen Maintenance Diagram - 10T5HE/COR/34-835/MF13/G 25/1



Life Expectancy Diagram



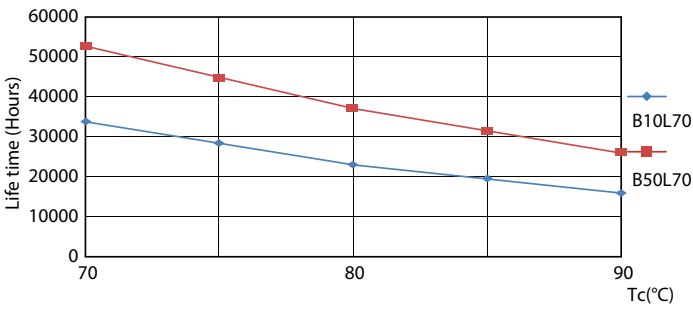
LEDtube 50K 7090 FailureRate-LED



Lumen Maintenance Diagram - 10T5HE/COR/34-835/MF13/G 25/1

MainsFit (UL Type-B) T5

Lifetime



LifetimeVsTc

