



MainsFit (UL Type-B) T5

10T5HE/COR/34-850/MF14/G 25/1

The MainsFit (UL Type-B) lamps are designed to be the perfect retrofit solution to move from traditional fluorescent lamps to energy saving LEDs. This ballast bypass lamp has everything needed built into the lamp with proven energy savings, long life, surge suppression and industry leading safety features. All lamps in the MainsFit family are double-ended to help simplify the installation. In addition, all lamps meet the Philips standards for light quality so that end users will be in a comfortable environment regardless of the MainsFit lamp type.

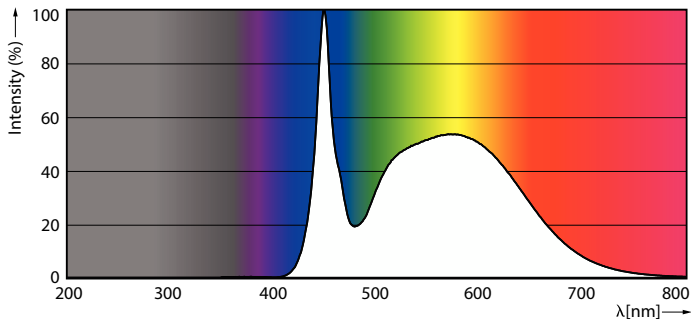
Product data

General Information	
Cap-Base	G5
Nominal lifetime	50,000 hour(s)
Switching Cycle	50,000
Lighting Technology	LED
Light Technical	
Color Code	850 [CCT of 5000K]
Beam Angle (Nom)	200 degree(s)
Luminous Flux	1,400 lm
Luminous Efficacy (rated) (Nom)	140.00 lm/W
Color Designation	Daylight
Correlated Color Temperature (Nom)	5000 K
Color Consistency	<5
Color rendering index (CRI)	80
LLMF At End Of Nominal Lifetime (Nom)	70 %

Operating and Electrical	
Line Frequency	50 to 60 Hz
Input Frequency	50 to 60 Hz
Power Consumption	10 W
Lamp Current (Max)	105 mA
Lamp Current (Min)	40 mA
Wattage Equivalent	21 W
Starting Time (Nom)	0.5 s
Warm-up time to 60% light	0.5 s
Power Factor (Fraction)	0.9
Voltage (Nom)	120-277 V
UL Type	UL Type B
Temperature	
Ambient temperature range	-20 °C to 45 °C
T-Case Maximum (Nom)	70 °C

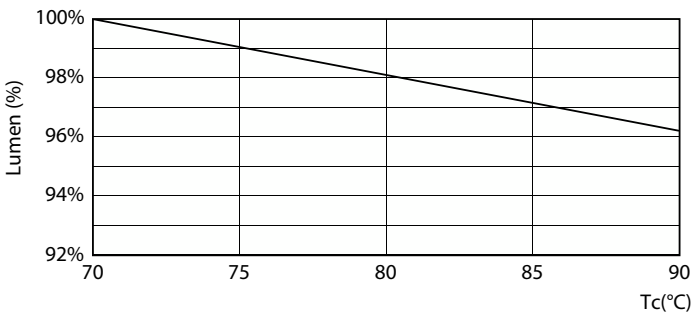
MainsFit (UL Type-B) T5

Photometric data

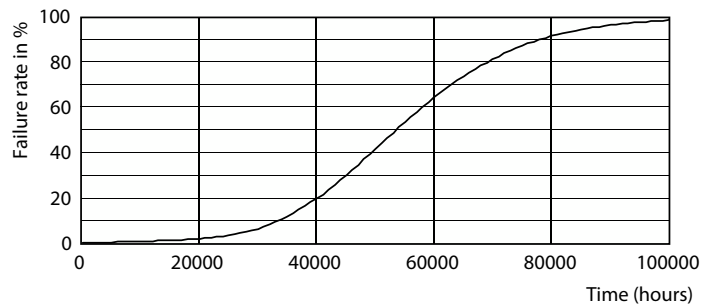


Spectral Power Distribution Colour - 10T5HE/COR/34-850/MF14/G 25/1

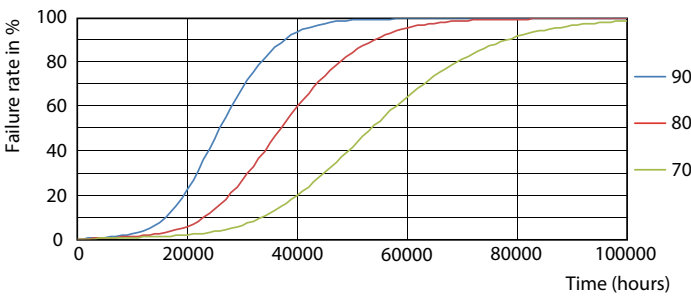
Lifetime



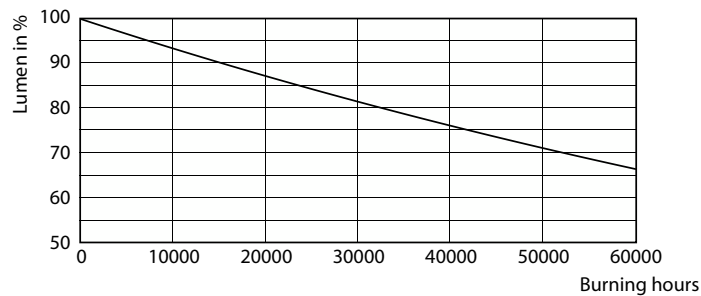
Lumen Maintenance Diagram - 10T5HE/COR/34-850/MF14/G 25/1



Life Expectancy Diagram



LEDtube 50K 7090 FailureRate-LED



Lumen Maintenance Diagram - 10T5HE/COR/34-850/MF14/G 25/1

MainsFit (UL Type-B) T5

Lifetime



LifetimeVsTc

