



T8

10.5T8/COR/48-840/IF16/G/DIM/BAA 25/1

Our TLEDs are available in InstantFit (Type A / Type C) or MainsFit (Ballast bypass / Type B) versions. The InstantFit lamps work on a broad variety of ballasts and LED drivers. Only InstantFit has over 15,000 lamp & ballast combinations delivering even light output, energy savings and a long lifetime. Our MainsFit products feature a double-ended design, simplifying installation while a proprietary safety circuit minimizes a shock risk. Lamp sizes range from 2-foot to 8-foot and U-bend with a variety of lumen outputs.

Product data

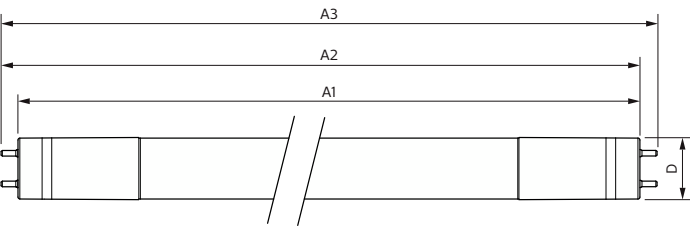
General Information		Operating and Electrical	
Cap-Base	G13 [Medium Bi-Pin Fluorescent]	Line Frequency	20K to 120K Hz
Nominal lifetime	50,000 hour(s)	Input Frequency	20K to 120K Hz
Switching Cycle	50,000	Power Consumption	10.5 W
Lighting Technology	LED	Lamp Current (Max)	350 mA
Buy American Compliant Products	Yes	Lamp Current (Min)	90 mA
EU RoHS compliant	Yes	Starting Time (Nom)	0.5 s
Light Technical		Warm-up time to 60% light	0.5 s
Color Code	840 [CCT of 4000K]	Power Factor (Fraction)	0.9
Beam Angle (Nom)	240 degree(s)	Voltage (Nom)	120-277, 347 V
Luminous Flux	1,650 lm	UL Type	TLED_Type A; UL listed HF
Color Designation	Cool White (CW)	Temperature	
Correlated Color Temperature (Nom)	4000 K	Ambient temperature range	-20 °C to 45 °C
Luminous Efficacy (rated) (Nom)	157.00 lm/W	T-Case Maximum (Nom)	50 °C
Color Consistency	<6	Controls and Dimming	
Color rendering index (CRI)	80	Dimmable	Only with specific dimmers
LLMF At End Of Nominal Lifetime (Nom)	70 %		

Mechanical and Housing	
Bulb Finish	Frosted
Bulb Material	Glass
Product Length	1,200 mm
Bulb Shape	T8

Approval and Application	
Energy Saving Product	Yes
Approval Marks	RoHS compliance UL certificate DLC compliance

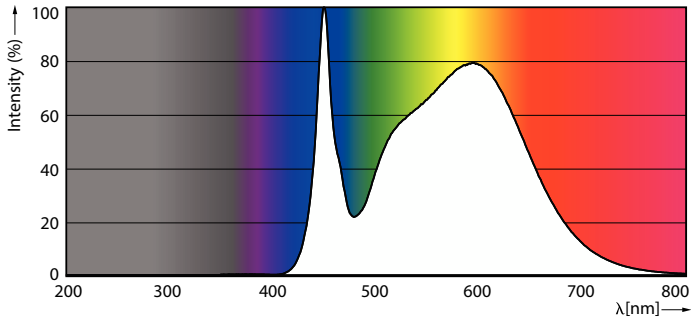
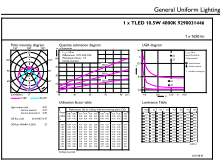
Product Data	
Order product name	10.5T8/COR/48-840/IF16/G/DIM/BAA 25/1
Full product name	10.5T8/COR/48-840/IF16/G/DIM/BAA 25/1
Order code	929003144604
Material Nr. (12NC)	929003144604
Numerator - Quantity Per Pack	1
EAN/UPC - Product/Case	046677576783
Numerator - Packs per outer box	25
EAN/UPC - Case	50046677576788

Dimensional drawing



Product	D1	D2	A1	A2	A3
10.5T8/COR/48-840/IF16/G/DIM/BAA 25/1	25.7 mm	25.7 mm	1,198.2 mm	1,205.3 mm	1,212.4 mm

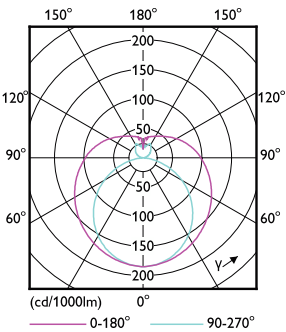
Photometric data



General uniform lighting - 10.5T8/COR/48-840/IF16/G/DIM/BAA 25/1

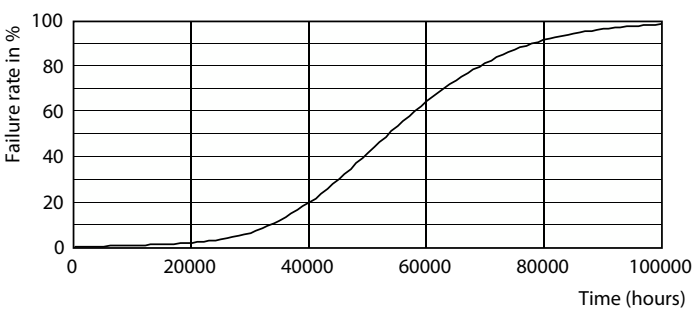
Spectral Power Distribution Colour - 10.5T8/COR/48-840/IF16/G/DIM/BAA 25/1

Photometric data

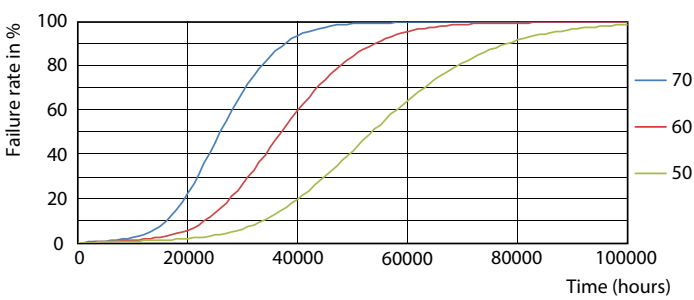


Light Distribution Diagram - 10.5T8/COR/48-840/IF16/G/DIM/BAA 25/1

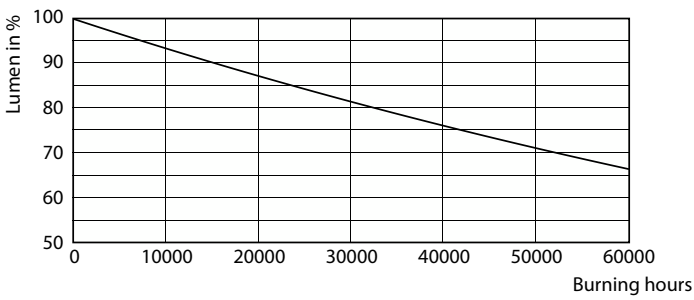
Lifetime



Life Expectancy Diagram - 10.5T8/COR/48-840/IF16/G/DIM/BAA 25/1

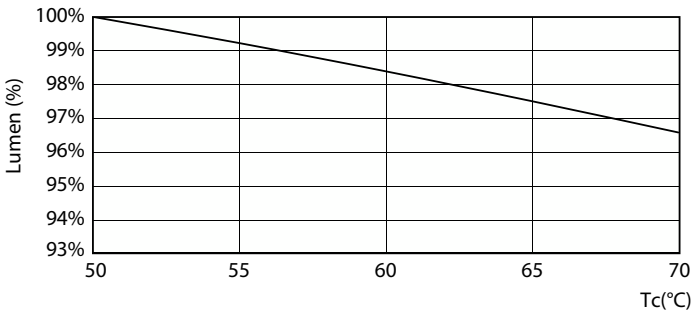


Life Expectancy Diagram - 10.5T8/COR/48-840/IF16/G/DIM/BAA 25/1



Lumen Maintenance Diagram - 10.5T8/COR/48-840/IF16/G/DIM/BAA 25/1

Lifetime



Lumen Maintenance Diagram - 10.5T8/COR/48-840/IF16/G/DIM/BAA 25/1

