



MASTER LED tube InstantFit HF T5



MAS LEDtube HF 1500mm UO 36W 840 T5

MASTER, LEDtube, T5, HF, 1500 mm, 36 W, 80W TL5 HO, 4000 K, 5600 lm, CRI 80, 60000 h

The Philips MASTER LEDtube integrates an LED light source into a traditional fluorescent form factor. Its unique design creates a perfectly uniform visual appearance, which cannot be distinguished from traditional fluorescents. These T5 lighting tubes are the right choice for absolute performance and are designed to stand up to everyday conditions. Unparalleled savings, thanks to low energy consumption and an exceptionally long lifetime, make these T5 LED tubes the choice for every demanding applications.

Product data

General Information	
Cap base	G5
Nominal lifetime	60,000 h
Switching Cycle	50,000
Lighting Technology	LEDtube
Flux measurement reference	Sphere
Warranty period	5 years

Light Technical	
Colour Code	840 [CCT of 4000K]
Beam angle (nom.)	200 degree(s)
Luminous Flux	5,600 lm
Colour designation	Cool White (CW)
Correlated Colour Temperature (Nom)	4000 K

Luminous efficacy (rated) (nom.)	155.00 lm/W
Colour consistency	<6
Colour rendering index (CRI)	80
LLMF at end of nominal lifetime (nom.)	70 %
Photobiological safety according to EN 62471	RG0

Operating and Electrical	
Line Frequency	30K to 100K Hz
Input frequency	30 K to 100 K Hz
Power Consumption	36 W
Lamp current (max.)	850 mA
Lamp current (min.)	450 mA
Starting time (nom.)	0.5 s
Warm-up time to 60% light	0.5 s

MASTER LED tube InstantFit HF T5

Power Factor (Fraction)	0.9
Voltage (nom.)	55-85 V
LED alternative to fluorescent lamp power	80W TL5 HO
Inrush current at mains	-
Max. lamp no. on MCB B type 10A – Mains	-
Max. lamp no. on MCB B type 10A – EM ballast without Compensation Capacitor.	-
Max. lamp no. on MCB B type 10A – EM ballast with Compensation Capacitor.	-
Max. lamp no. on MCB B type 16A – Mains	-
Max. lamp no. on MCB B type 16A – EM ballast without Compensation Capacitor.	-
Max. lamp no. on MCB B type 16A – EM ballast with Compensation Capacitor.	-
Ballast Compatibility	HF

Temperature

T-Case maximum (nom.)	75 °C
-----------------------	-------

Controls and Dimming

Dimmable	Yes – Check ballast compatibility
----------	-----------------------------------

Mechanical and Housing

Lamp Finish	Frosted
Bulb material	Glass
Product length	1,500 mm
Bulb shape	T5
Net Weight (Piece)	0.170 kg

Approval and Application

Energy Efficiency Class	D
Energy-saving product	Yes
Approval marks	RoHS compliance KEMA Keur certificate
Energy consumption kWh/1,000 hours	36 kWh
EPREL Registration Number	989223
CE mark	Yes
EU RoHS compliant	Yes
Ambient temperature range	-20°C to 45°C

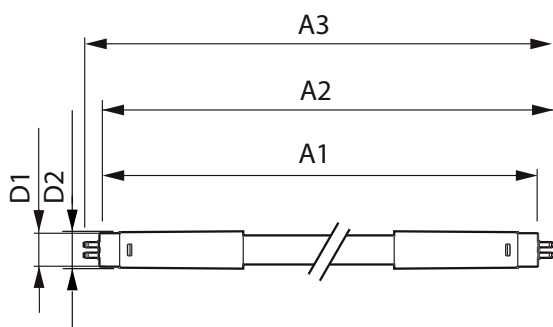
Application Conditions

Wireless Technology	Not applicable
---------------------	----------------

Product Data

Order product name	MAS LEDtube HF 1500mm UO 36W 840 T5
Full product name	MAS LEDtube HF 1500mm UO 36W 840 T5
Full EOC	871951441907000
Order code	929003154002
Material no. (12 NC)	929003154002
Numerator – quantity per pack	1
EAN/UPC – Product/Case	8719514419070
Numerator – packs per outer box	10
EAN/UPC – Case	8719514419087

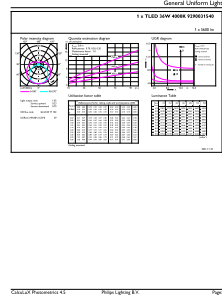
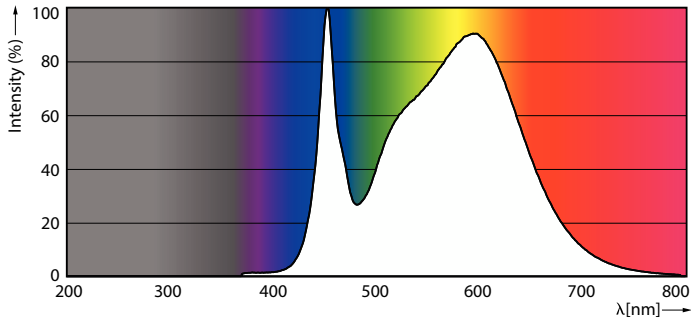
Dimensional drawing



Product	D1	D2	A1	A2	A3
MAS LEDtube HF 1500mm UO 36W 840 T5	15.5 mm	19 mm	1,449 mm	1,456 mm	1,463 mm

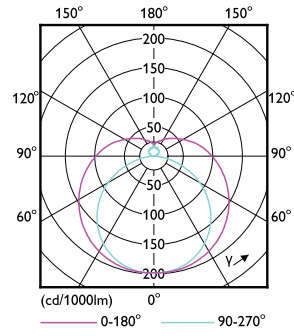
MASTER LED tube InstantFit HF T5

Photometric data



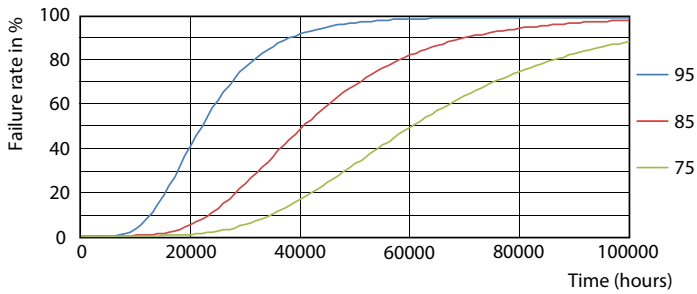
Spectral Power Distribution Colour - MAS LEDtube HF 1500mm UO 36W 840 T5

General uniform lighting - MAS LEDtube HF 1500mm UO 36W 840 T5

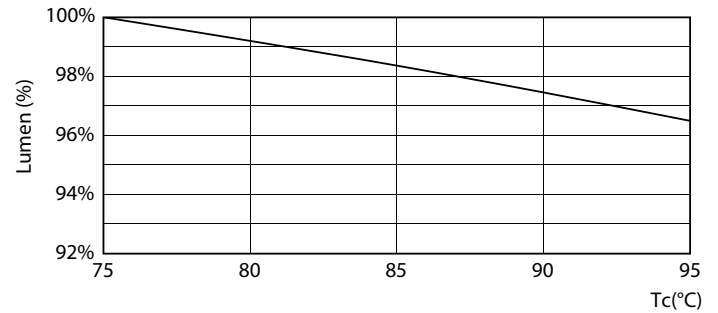


Light Distribution Diagram - MAS LEDtube HF 1500mm UO 36W 840 T5

Lifetime



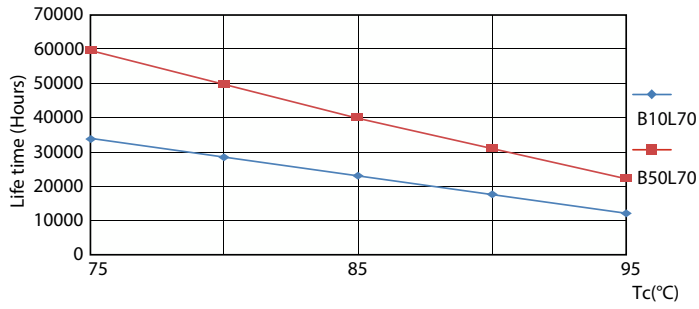
LEDtube 60K 7595 FailureRate-LED



Lumen Maintenance Diagram - MAS LEDtube HF 1500mm UO 36W 840 T5

MASTER LED tube InstantFit HF T5

Lifetime



LEDtube 60K 7595 LifetimeVsTc-LED

Lumen Maintenance Diagram - MAS LEDtube HF 1500mm UO 36W 840 T5



Life Expectancy Diagram

