



Contractor-grade MainsFit (UL Type-B) T8

16.5T8/CNG/48-850/MF21/G 25/1

The Contractor-grade MainsFit (UL Type B) lamps are designed to provide simple retrofit solution to move from traditional fluorescent lamps to energy saving LEDs. This ballast bypass lamp is similar to other UL Type B lamps in the Philips family by providing proven energy savings, long life (50k hours), surge suppression and industry leading safety features. All lamps in the Contractor-grade family are also double-ended to help simplify the installation.

Product data

General Information	
Cap-Base	G13 [Medium Bi-Pin Fluorescent]
Nominal lifetime	50,000 hour(s)
Switching Cycle	50,000
Lighting Technology	LED
Light Technical	
Color Code	850 [CCT of 5000K]
Beam Angle (Nom)	240 degree(s)
Luminous Flux	2,100 lm
Color Designation	Daylight
Correlated Color Temperature (Nom)	5000 K
Luminous Efficacy (rated) (Nom)	127.00 lm/W
Color Consistency	<5
Color rendering index (CRI)	80

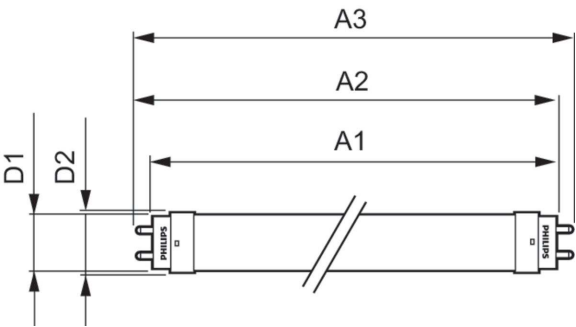
LLMF At End Of Nominal Lifetime (Nom) 70 %	
Operating and Electrical	
Line Frequency	50 to 60 Hz
Input Frequency	50 to 60 Hz
Power Consumption	16.5 W
Lamp Current (Max)	134 mA
Lamp Current (Min)	58 mA
Wattage Equivalent	32 W
Starting Time (Nom)	0.5 s
Warm-up time to 60% light	0.5 s
Power Factor (Fraction)	0.9
Voltage (Nom)	120-277 V
UL Type	UL Type B

Contractor-grade MainsFit (UL Type-B) T8

Temperature	
T-Case Maximum (Nom)	70 °C
Controls and Dimming	
Dimmable	Limited
Mechanical and Housing	
Bulb Finish	Frosted
Bulb Material	Glass
Product Length	1,200 mm
Bulb Shape	T8
Net Weight (Piece)	0.190 kg
Approval and Application	
Energy Saving Product	Yes
Approval Marks	RoHS compliance UL certificate DLC compliance

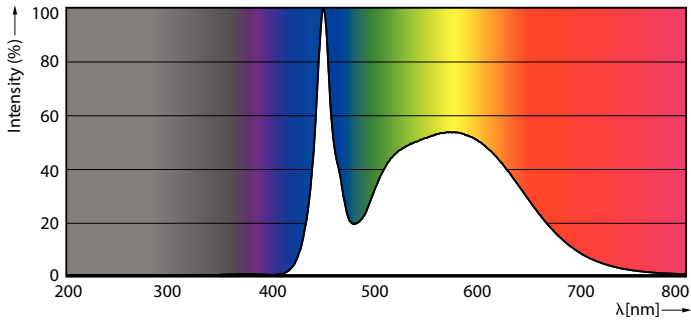
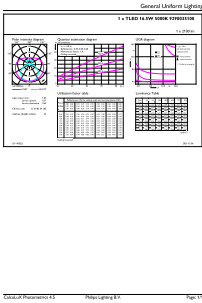
EU RoHS compliant	Yes
Ambient temperature range	-20 °C to 45 °C
Application Conditions	
can it be used in closed luminaires	Yes
Product Data	
Order product name	16.5T8/CNG/48-850/MF21/G 25/1
Full product name	16.5T8/CNG/48-850/MF21/G 25/1
Order code	929003510804
Material Nr. (12NC)	929003510804
Numerator - Quantity Per Pack	1
EAN/UPC - Product/Case	046677579067
Numerator - Packs per outer box	25
EAN/UPC - Case	50046677579062

Dimensional drawing



Product	D1	D2	A1	A2	A3
16.5T8/CNG/48-850/MF21/G 25/1	25.7 mm	28 mm	1,198.2 mm	1,205.3 mm	1,212.4 mm

Photometric data

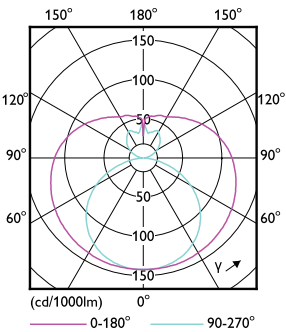


General uniform lighting - 16.5T8/CNG/48-850/MF21/G 25/1

Spectral Power Distribution Colour - 16.5T8/CNG/48-850/MF21/G 25/1

Contractor-grade MainsFit (UL Type-B) T8

Photometric data

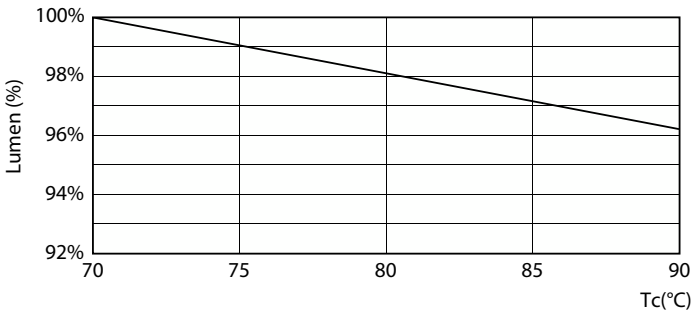


Light Distribution Diagram - 16.5T8/CNG/48-850/MF21/G 25/1

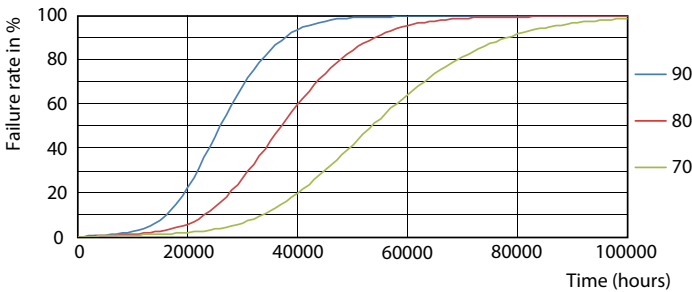
Lifetime



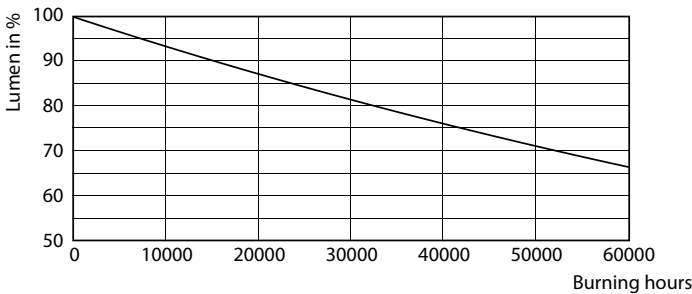
Life Expectancy Diagram



Lumen Maintenance Diagram - 16.5T8/CNG/48-850/MF21/G 25/1



LEDtube 50K 7090 FailureRate-LED



Lumen Maintenance Diagram - 16.5T8/CNG/48-850/MF21/G 25/1

Contractor-grade MainsFit (UL Type-B) T8

Lifetime



LifetimeVsTc

